



THE  
FUTURE  
OF  
LEADERSHIP

ANNUAL REPORT

Richard Ivey School of Business  
The University of Western Ontario

**IVEY**



At Ivey we don't just study leadership: we practise it, day in and day out. Our students learn to lead by creating bright ideas, making tough decisions, inspiring others, and serving their communities. In other words, they learn to lead by leading.





“I chose Ivey’s Hong Kong EMBA even though I work and live in Beijing, because it’s globally-focused and gives me the opportunity to learn with people from different countries and industries.”

Changsheng Duan, EMBA '11

**Global Focus** At Ivey, we believe the best way to teach international business is being international. That’s why, in 1998, we were the first North American business school to establish a campus in China, the Cheng Yu Tung Management Institute, to offer Executive MBA and custom executive development programs. With about a dozen different nationalities in each EMBA class, students gain an understanding of different cultures and get a chance to witness the Asian economic surge firsthand while receiving the same world-class Ivey degree.

*Changsheng Duan is a student in Ivey’s Executive MBA program in Hong Kong.*





“The hands-on learning through Ivey Connects helped to shape the type of leader I have become, and it opens your eyes to new career paths and to the value of giving back to the community.”

Tanya Moryoussef, HBA '12

**Ivey Connects** A student-led organization, Ivey Connects inspires students to contribute to the societies in which they operate and provides opportunities to think about sustainable development and CSR from a business perspective.

*Tanya Moryoussef was the section leader for a student group paired with the London-based non-profit organization, Future Possibilities for Kids.*







“You experience diversity in the classroom, but, when you travel abroad, it’s taken to a whole new level. Everything you know is gone—your surroundings, your contacts, the language—and you must adapt. It prepares you for any situation in the workplace.”

Melanie Thomas, HBA '11

**Ivey LEADER Project** Envisioning a world in which all regions have the tools, skills and abilities to participate in a free-market economy, Ivey student-led LEADER (Leading Education and Development in Emerging Regions) Project, launched in 1991, brings the Ivey case method to students, entrepreneurs and managers in emerging regions.

*Melanie Thomas travelled to Chişinău, Moldova, one of the poorest countries in Europe, for two weeks in May as part of the Ivey LEADER Project.*





“In an international classroom our common ground is that we are all learning the same material. The classroom culture transcends our national cultures.”

Bushra Tobah, MSc '11

**Team Work** Working in teams, common to all of Ivey's programs, reflects the real world of business. Working with an international group, such as the student teams in Ivey's MSc program, reflects the increasing cultural diversity of business and the need to communicate and combine individual strengths to maximize impact.

*Bushra Tobah is a student in Ivey's inaugural Masters of Science in Management program. (left to right: Adam Kauppi, Sherisse McLaughlin, Bushra Tobah, and Mudasir Marfatia)*





“A good business idea can’t stand on its own—entrepreneurs need commitment, competent team members and a passion to win. The Ivey New Venture Project tests all these angles.”

Paul von Martels, MBA '11

**Ivey New Venture Project** Ivey’s MBA and HBA students get a first-hand look at start-up success through the Ivey New Venture Project. This team-based field project takes students through the process of launching a new venture.

*Paul von Martels is working on a business project called “Gourmet Weeds,” which involves licensing European hydroponic technology to produce leafy green vegetables and herbs.*





“My thinking was bounded by my North American perspective. You have no idea until you get there and immerse yourself in that culture; it’s not academic in any way, shape or form. It’s real learning.”

Jean-Paul Cadeau, MBA '11

**International Study Trips** The MBA International Study Trip helps Ivey students to gain appreciation of different cultures and business environments by providing on-the-ground exposure to some of the world’s fastest growing economic regions. In 2010, 84 Ivey students visited China and 32 students travelled to India.

*Jean-Paul Cadeau participated in Ivey’s inaugural trip to India in December 2010. (left to right: Victor Diab, Adam Schlegel, Fiorella Marchinares, Gunpreet Rekhi, Rachael Ibey, and Razy Farook)*

We are Canada's leadership school. We develop leaders. This shared vision keeps us focused on doing the right things for our students.





## DEAN'S MESSAGE

In February 2010, I had the honour and privilege of participating in the Vancouver Olympics as a member of the VANOC board of directors. Being a part of this spectacular event was for me, as for all Canadians, an inspiration and source of great pride. But, for those of us who had been part of the planning and execution behind the scenes, it was also the culmination of years of hard work, and a fair share of unexpected challenges along the way. We persevered; we had a vision for Canada; and, we were rewarded with the support and pride of a nation.

I have seen the same spirit and equally inspiring outcomes as Dean of the Richard Ivey School of Business. Over the past five years, I have often used the words "gaining momentum" to describe our progress. It is a momentum that has continued to grow throughout the challenges of a persistent global recession, and despite an increasingly complex and competitive international marketplace for business education.

I am not surprised by our success. A culture of excellence and a spirit of tenacity pervade all we do. That has not changed in the 88 years of the School's history. Most importantly, we know who we are. We are Canada's leadership school. We develop leaders. This shared vision keeps us focused on doing the right things for our students. We are rewarded by their success and the positive impact they have in the world as Ivey leaders.

2010 was an outstanding year for Ivey from new partnerships in India; the hiring of 17 new faculty members; the first year of our MSc program; the public launch of our Campaign for Leadership, which has already achieved 75 per cent of its \$200 million goal; continued excellence and quality growth in all our degree programs; and, the announcement of the new Ian O. Ilnatowycz Institute for Leadership at Ivey that will allow us to pursue even more research, outreach, and student activities focused on leadership development.

This annual report is a testament to the spirit and pride, the dedication and hard work, and the unremitting commitment to excellence of the faculty, staff, students and alumni, who are the Ivey Community. Thank you for your contributions to our success in 2010, and for your belief in our future. You keep us inspired and aspiring to be our best.

I close with the words of my friend John Furlong, President of the 2010 Vancouver Olympics: "You are living proof that men and women everywhere are capable of doing great good, and that in life as it is in sport, we should always give our best and never, ever give up."

The best is yet to come.

**CAROL STEPHENSON, O.C.**  
DEAN, RICHARD IVEY SCHOOL OF BUSINESS  
LAWRENCE G. TAPP CHAIR IN LEADERSHIP



01

PROGRAMS REPORT

# Growth. Innovation. Internationalization.

"LEARNING AND INNOVATION GO HAND IN HAND. THE ARROGANCE OF SUCCESS IS TO THINK THAT WHAT YOU DID YESTERDAY WILL BE SUFFICIENT FOR TOMORROW."  
—WILLIAM POLLARD

With a renowned undergraduate program that is growing with more and higher quality candidates, a new MSc in Management, a resurgent MBA that competes with the world's best, an EMBA program that is attracting more executives than our three closest competitors combined, and an increased diversity and a sharper focus in the classroom, Ivey is leading a new era in management education.

## MBA

At the MBA level, the School has completed the transition to a single-intake model with a comprehensive new approach to recruiting. From where we seek to find potential students to how we engage and assess those with the best fit for Ivey, the MBA program competes with the best in the world.

"On paper this is the best incoming group of MBAs we've ever had," says Eric Morse, Associate Dean of Programs. "As we go through the second round of recruiting with our new tactics I can tell you that it's more competitive than ever to become an Ivey MBA student. The quality of our students reflects that, and, more importantly, industry is acknowledging that through outstanding placement rates (see page 21)."



02

## EMBA

Ivey's EMBA program continues to be the market leader in Canada—with more than 50 per cent market share in the GTA—and waiting lists at every intake. A new section of the customized J.D. Irving EMBA Program will run from February 2011 to June 2012, and the School also launched a new Agricultural Bank of China (ABC) EMBA Program in partnership with BMO Financial Group in 2010. This program will see 26 top executives (of more than 470,000 employees) at ABC relocating to Canada for a year to study at Ivey and BMO Financial Group.

## HBA

"One of the myths I hear is that our growth must be diluting the talent. That's just wrong," says Morse. "Program growth was carefully researched, planned and, quite frankly, executed with tenacity by the HBA team over the past five years. Traditionally, Ivey was considered a great undergraduate business program for students in southern Ontario. That was our market. Today, we've become a great program for Canada and the world. That's our market. We feel really good about where we are now, and where we are headed."

What is driving HBA growth? First, there are general demographic trends. More students are entering university today than ever before, and a greater percentage of those students choose to pursue a business degree. These two trends alone have created a much larger pool of candidates. In addition, we've made great strides in attracting more women to the HBA program (50 per cent of pre-admitted students (AEO) this year are women).

At eight sections, from a geographic perspective, the HBA class will be composed of the equivalent of two sections of Canadians from outside of Ontario and one section of international students. Today Ivey better reflects the Canadian mosaic. This growth in diversity allows us to maintain an unwavering commitment to student quality. It's working. With student placement greater than 90 per cent—even through an economic downturn—we remain a market leader in placement and salary among undergraduate business programs in Canada.

The HBA program has grown from a regional to an international program, competing with the top programs in the U.S., and is, what Morse calls, "Canada's undergraduate business program—open to the world."

## MSc

In August 2010, Ivey welcomed 36 students, fresh from their undergraduate degrees, as the inaugural class of the MSc in Management Program. These students bring a dynamic array of international experience to the classroom, including the collective ability to speak more than 20 different languages. The degree is focused on international business and is delivered in conjunction with the CEMS Master in International Management Program—ranked as the top Masters in Management (MIM) program in the world according to the *Financial Times*. It addresses the need for a new breed of analyst and manager, who not only understands best practices, but can also assess how innovation and changing best practices affect international management.



## Across our Programs

The diversity of our student body strengthens our programs by adding a greater breadth of perspective that is essential to developing outstanding leaders in a global business environment.

"It makes for a more dynamic classroom discussion when you have people from different cultural backgrounds—people with different ideas about business," says Morse. "Employers are looking for people who are more globally-versed. Business is global. The companies that our students are going to be working for are global. It is a part of our mission and I feel great about the momentum we are experiencing working on this strategic goal—Ivey develops business leaders who think globally, act strategically, and contribute to the societies within which they operate."

01 **ERIC MORSE**  
Associate Dean of Programs

02 **DARREN MEISTER**  
Director HBA and MSc programs

03-06 Ivey Students





01

PROGRAMS REPORT

# Career Management team connects students to real world

FOR IVEY STUDENTS, THE PATH TO A BUSINESS CAREER ISN'T TRAVELLED ALONE. LIKE AN INVALUABLE TOUR GUIDE, THE SCHOOL'S CAREER MANAGEMENT TEAM HELPS STUDENTS TO MANOEUVRE THROUGH THE ARRAY OF CHOICES AND GIVES ADVICE FOR REACHING THEIR DESTINATION.

"We're a bridge that helps students understand and connect to the recruiting world," says Sharon Irwin-Foulon, Director of Career Management. "But, of equal importance, is helping students build skills that they'll use, not only for their first jobs, but for the life of their careers."

That real-world connection extends far beyond job leads. Through classroom work and one-on-one coaching that helps students develop personal brand strategies, as well as interview and networking skills, Ivey's students are armed with a toolkit for future success. Considered a critical element of success at Ivey, Career Management is integrated into the core of both the MBA and HBA curriculum. Four MBA classes are led by Irwin-Foulon, while Craig Ingram, Associate Director of Career Management, runs the five HBA classes. These classes, based on the familiar case method, begin early in the school year so students can prepare for the upcoming recruiting periods.

"The goal is to get people thinking critically about what they want to do and to be mindful of how the marketplace works, so they can make decisions



02

that will help them focus and prepare," says Irwin-Foulon. "Feedback from our annual recruiter survey shows most recruiters find Ivey students are better prepared for the recruiting process and handle themselves very professionally."

"Our approach is to develop strong self-marketing skills. Students learn to think about what they want to do and think about themselves as a unique collection of skills, experiences and competencies," explains Irwin-Foulon. "They define their brand, target audience, and the best way to take that to market."

For the MBAs, additional support comes from *Get Connected*, a three-day Career Management program in Toronto involving corporate information sessions, mock interviews, and educational panels with industry experts that cover the functional and industry choices typically facing MBAs. A highlight of *Get Connected* is a networking night with about 150 recent MBA alumni where students experience firsthand the power of Ivey's global alumni network.

- 01 **CRAIG INGRAM**  
Associate Director, Career Management  
and **JON JHUN**, HBA student
- 02 **KAREN CONWAY**  
Associate Director, Career Management
- 03 **SHARON IRWIN-FOULON**  
Director, Career Management
- 04 **SHARON IRWIN-FOULON**  
and **JENNIE RITTBERG**, MBA student
- 05 MBA students, **JAMES THOMAS**  
and **EWELINA KUSMIDER**  
at The Ivey Corporate Showcase



03

Building relationships with corporations and bringing new corporate recruiters on board is also critical to Career Management's success. Associate Director Karen Conway, points to the results of a recent survey of more than 80 top firms, which were extremely positive. In fact, Ivey Career Management is considered the best in Canada and consistently scores the top marks in both recruiter and student satisfaction surveys conducted by international publishers, such as *BusinessWeek* and *Financial Times*.

Of course, placement rates are still an important measure of success and Ivey's rates for both MBAs and HBAs are consistently strong (see pages 21 and 24). Ivey's unique approach, which incorporates traditional on-campus recruiting, corporate outreach focused on a strong client experience, and helping students build the skills to uncover and land roles in the hidden job market, all contribute to the success of Ivey students, even in the most competitive markets.

"Students might uncover an opportunity that is not formally advertised or pursue a career in a different area, such as the non-profit industry, that doesn't have formalized recruiting strategies," says Irwin-Foulon. "We try to give students the skills and support so, if they want to do something different, they can figure out how they are going to do that and set themselves up for success."

"The ultimate measure of our success is the success of alumni," say Irwin-Foulon.

And with more Ivey graduates in the Top 40 Under 40™ than any other business school, and three in five graduates in senior executive positions in firms around the world, Ivey graduates are achieving great success.



04



05

## Ivey breaks new ground with social media recruiting

**WHEN YOU WANT TO CATCH THE MOST QUALIFIED AND TALENTED POOL OF CANDIDATES, IT CAN HELP TO CAST A WIDE NET.**



That's why Ivey's MBA Program has decided to leverage social media to tap into a larger pool of potential program candidates. With millions of combined users on LinkedIn, Facebook and Twitter, the increasingly growing group of online aficionados could not be ignored.

In early 2010, the MBA Program launched a free "Ivey MBA" application download for the iPhone and the BlackBerry that allows prospective applicants to receive instant updates from Ivey's social media channels.

"We thought a Smartphone app would be a great way to really target the next generation of potential MBA candidates and do it in a way that is fun," says Jenni Denniston, HBA '04, Associate Director, MBA Recruitment and Admissions. "The idea behind the app was to make it easier for prospective applicants to have the Ivey MBA site in their pockets and get the information they need when they want it and where they want it."

The app followed on the heels of the launch of the Ivey MBA mobi site and seemed a logical extension to the School's other social media initiatives.

As of October 2010, there had been 1,300 downloads of the app—500 for the iPhone and 800 for the BlackBerry.

Denniston says next steps for social media recruiting include expanding the information online so that people can even sign up for upcoming Ivey MBA events within the app.



01 Ivey MBA students

02 **FRASER JOHNSON**, HBA '82, MBA '92 & PhD '95  
Director, MBA program

03 Ivey MBA students



PROGRAMS REPORT

# A new approach to MBA admissions

WHEN IT COMES TO ENSURING THE RIGHT MIX OF MBA STUDENTS—THOSE WHO WILL SUCCEED IN THE PROGRAM, ENHANCE THE LEARNING EXPERIENCE IN THEIR CLASS, AND FIND SUCCESS IN THEIR CAREERS—IVEY HAS DISCOVERED THE RECIPE FOR SUCCESS.

“With our close ties with recruiting organizations’ best practices we have been in a great position to work hand in hand with the MBA Admissions teams over the past several years to continually grow tighter, smarter and more consistent in our recruiting,” says Sharon Irwin-Foulon, Director of Career Management.

Career Management—in conjunction with Fraser Johnson, HBA '82, MBA '92, PhD '95, Director, MBA Program, and Eric Morse, Associate Dean of Programs—refined admissions processes to create consistent metrics for assessing candidates. Ivey’s HBA program also uses consistent candidate selection criteria and processes that ensure a strong talent pool.

“Our processes and screening are geared toward assessing a candidate’s potential success in our program. You could certainly use the same assessment at another school but it would not provide the same clarity on the calibre of the candidates. Ours is very focused on the unique demands of the Ivey MBA program and what our alumni have come to expect from one another,” says Johnson. “There was a well-thought-out and time-intensive process to develop how we assess candidates at various stages in the recruiting process. We have looked at how people did in the class and have traced that back to the components of our screening to ensure we understood leading indicators for predicting success at Ivey.”

“This is not about how much we like the candidates, but how well they’ll do in the program. We’re doing a disservice if we let people into the program and they don’t do well,” says Johnson.

# Programs at a Glance MBA

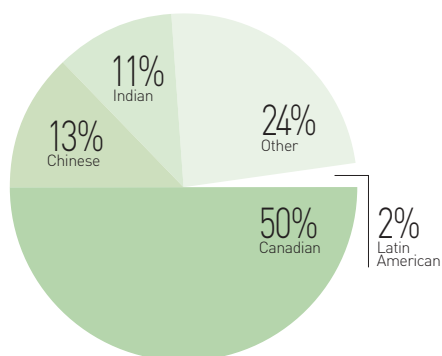
## 2010 MBA Class Profile

Countries of citizenship	15
Birth countries	29
Different languages spoken	29
International work experience	40%
More than one degree	19%
<hr/>	
Students	164
Male	68%
Female	32%
Years work experience	4.4
Average age	28
Average GMAT	673

## 2010 MBA Employment

Received offer(s)	92%
Still seeking employment	8%

## 2010 MBA Birth Country



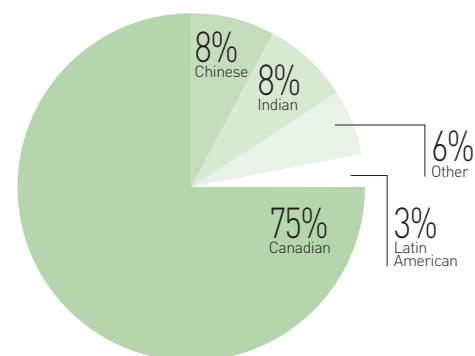
## Compensation by Industry (3 Months Post-Graduation)

Industry-Base Salary	% of Offers	Mean
Consulting	24%	\$101,615
Consumer packaged goods	8%	\$73,225
Energy / Resources	5%	\$88,347
Finance-corporate office	9%	\$77,800
Finance-corporate banking	20%	\$89,583
Finance-investment management	4%	\$78,333
Finance-other	3%	\$82,500
Government	2%	\$116,500
Healthcare / Pharmaceuticals	2%	\$86,000
IT / Telecommunications	5%	\$88,500
Legal service	6%	n/a
Wholesale / Retail	5%	\$75,000
Other	6%	\$89,400

Average total compensation was \$99,337\*.

\*Includes: base salary, signing bonus, and other guaranteed compensation.

## 2010 MBA Citizenship

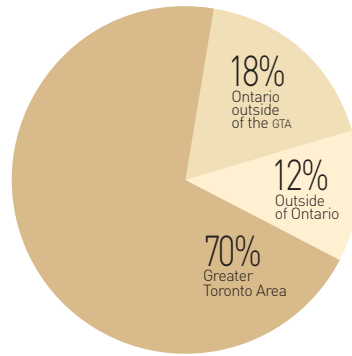


# Programs at a Glance EMBA Canada

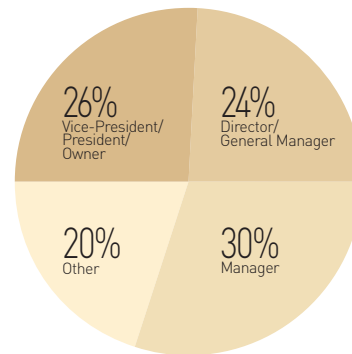
## 2010 EMBA Class Profile

Male	74%
Female	26%
Educated internationally	20%
Years work experience	15
Average age	39

## Place of Residence



## EMBA Students Position at Start of Program



## EMBA by Industry at Start of Program

Business services	5%
Computer technology	11%
Construction	2%
Consulting	6%
Financial services	14%
Health services	6%
Holding / Investments	9%
Insurance	3%
Media / Entertainment	2%
Manufacturing	10%
Mining	2%
Non-profit	2%
Pharma	4%
Public sector	4%
Retail Trade	7%
Other	13%



Programs  
at a Glance  
**EMBA**  
Hong Kong

**2010 EMBA Hong Kong Class Profile**

Male	74%
Female	26%
Educated internationally	91%
Years work experience	14
Average age	37

**Place of Residence**

Hong Kong	43%
India	13%
Canada	9%
Other	7%
China	4%
Singapore	4%
Nigeria	4%
Australia	4%
Switzerland	4%
USA	4%
Mexico	4%

**EMBA Hong Kong by Industry at Start of Program**

Financial services	26%
Retail trading	22%
Manufacturing	9%
Pharmaceutical	9%
Non-profit / Public sector	9%
Other	5%
Consulting	4%
Computer technology	4%
Construction	4%
Media / Entertainment	4%
Mining	4%

# Programs at a Glance HBA

## 2010 HBA Class Profile

Students	524/7 sections
Male	58%
Female	42%
Incoming class average	82%
Advanced Entry Opportunity (AEO)	
354 students	68%
Non-AEO from Western	
117 students	22%
Other universities	
53 students	10%
Attended grade 12 in Ontario	
413 students	79%
Attended grade 12 outside of Ontario in Canada	
88 students	17%
Attended grade 12 outside of Canada	
23 students	4%
International citizenship	
	9%
Different academic disciplines students came from	44

## 2010 HBA Employment

Received offer(s)	92%
Still seeking employment	8%

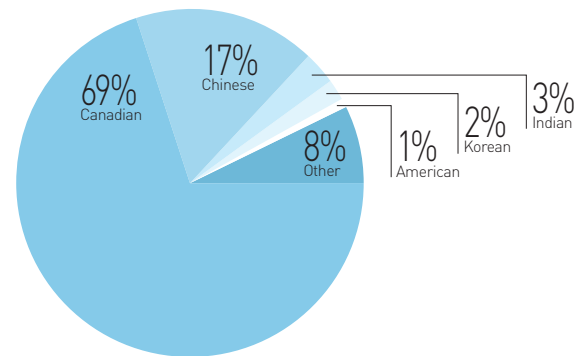
## Compensation by Industry (3 Months Post-Graduation)

Industry-Base Salary	% of Offers	Mean
Accounting	27%	\$42,808
Consulting	14%	\$60,512
Consumer packaged goods	9%	\$54,363
Education	3%	n/a
Energy / Resources	2%	\$46,712
Finance-corporate banking	16%	\$74,294
Finance-corporate office	3%	\$50,500
Finance-other	4%	\$56,500
IT / Telecommunications	6%	\$48,000
Manufacturing	2%	n/a
Marketing / Advertising / PR	4%	n/a
Real Estate / Construction	2%	n/a
Wholesale / Retail	3%	\$42,500
Other	5%	n/a

Average total compensation was \$61,099\*.

\*Includes: base salary, signing bonus, and other guaranteed compensation.

## 2010 HBA Birth Country



# Programs at a Glance PhD

## 2010 PhD Class Profile

Male	37
Female	27

## Placement by Location

U.S.	4
Canada	11

## 2010 Scholarships from Major Federal and Provincial Competitions

Vanier Canada graduate scholarship	2
SSHRC doctoral fellowship	3
Ontario graduate scholarship	11

## Enrolment by Discipline

Finance	3
General management	31
Information systems	6
Marketing	9
Management science	5
Organizational behaviour	7
Operations management	3

# Executive Development

## 2010 Executive Development Profile

### Number of Program Days

Open enrolment	2643
Custom	4981

New Custom Partnerships 5

Organizations Participating in Ivey Executive Development Programs 457

### 2010 Open Enrolment Participants by Industry

Construction	4%
Consulting	7%
Financial	13%
Manufacturing	12%
Natural resources	6%
Not for profit	5%
Pharmaceutical	4%
Public	6%
Retail	13%
Service	19%
Technology	4%
Transportation	5%
Utilities	2%

01 **ARIFF KACHRA**, PhD '01, Director of India Development

02 MBA inaugural trip to India in December 2010



## INTERNATIONAL Ivey spreads its wings in India

WITH AROUND 10 PER CENT OF IVEY'S MBA STUDENTS ALREADY DRAWN FROM INDIA, AND GROWING INTEREST IN THE IVEY CASE METHOD OF LEARNING, A LOGICAL STEP WAS TO TAKE IVEY PROGRAMS TO INDIA.

"We wouldn't have pursued this strategy of entering India if we hadn't done our homework," says Ariff Kachra, PhD '01, Ivey's Director of India Development. "We have spoken to a number of executives and they tell us the top Indian business schools do a tremendous job with MBA programs, but top-level executive development is still something new for Indian business schools and it's something that we're very experienced in at Ivey."

The need for executive development in India, as well as the potential to learn from the fast-growing country, piqued Ivey's interest in bringing its Executive Development programs to India. With a GDP growth of almost 9 per cent, India is one of the fastest-growing economies in the world and learning opportunities are tremendous, maintains Kachra.

"Indian managers don't worry about hiring one or two people, they worry about hiring thousands of people every year. How often do you get to learn from a business



environment that's growing at that speed?" he asks. "This is a wonderful opportunity for our researchers, teachers, programs and executive development."

"Indian CEOs are not concerned about being successful today, they are concerned about being successful when that GDP drops—when things are leaner, there are more competitors and consumers are pickier about the products they'll buy," says Kachra. "Executive education for Indian companies becomes extremely important to secure sustainable, long-term competitive advantage in their own market space."

Ivey has a four-pronged strategy for entering India, which involves executive development, case publishing, partnering with top Indian schools, and increasing recruiting efforts in India. Already, about 10 per cent of Ivey's MBA students come from India and the alumni base is growing rapidly.

As the largest publisher of Asian-based cases, Ivey plans to increase its leadership in this field by publishing hundreds of Indian-based cases in the next five years. Some Indian-based cases are already in the publication process thanks to an intake from a national case competition at the Indian School of Business (ISB) that Ivey sponsored in August 2010 and will again in 2011.

In the past two years, Ivey has gradually increased its presence in India. Starting with a trip to India by Ivey's Executive Team in October 2009 to explore partnerships and engage with the academic and business community, the visit culminated in Ivey leaders signing a partnership with ISB for a Case Development Centre. In May 2010, Ivey also signed a memorandum of understanding with the Indian Institute of Management Bangalore to create new opportunities for joint research projects, exchanges, and international conferences in India and Canada.

"If Ivey is in India, it becomes a stronger school in Canada. If Ivey is in India, Hong Kong becomes a better executive education choice. And, because we're in Hong Kong and Canada, Ivey is a better choice for Indian executives," says Kachra. "This is not about three institutions—it's about one institution getting stronger in every market in which it operates. It's a truly transnational strategy."

03 **JANET DE SILVA, EMBA '94**  
Incoming Dean of Ivey Asia

04 **KATHLEEN SLAUGHTER**  
Current Dean of Ivey Asia



## INTERNATIONAL Future looks bright in China

WHILE SETTLERS BACK IN THE 1800S WERE ENCOURAGED TO HEAD WEST FOR OPPORTUNITIES, BUSINESS PEOPLE TODAY ARE ENCOURAGED TO GO EAST—WAY EAST—TO FAST-GROWING COUNTRIES SUCH AS CHINA AND INDIA. KATHLEEN SLAUGHTER, DEAN, IVEY ASIA, AND JANET DE SILVA, EMBA '94, THE INCOMING DEAN OF IVEY ASIA, DISCUSS THE MAJOR BUSINESS SHIFTS IN CHINA AND WHAT LIES AHEAD FOR IVEY ASIA.

### **Q: What are the major business shifts that you have seen in Hong Kong?**

**Slaughter:** For one thing, we have seen a major shift in the education industry. It has been increasingly competitive in the education field with more major players in Hong Kong as Asia continues to prosper and grow.

**De Silva:** The biggest shift since I have been here has been in world economic power from West to East. A huge transition has been made from “Made in China” to “Sold in China” and that has created the world’s fastest-growing, middle class consumer market. This is having a bigger impact on global markets than China as a producer of goods. China has also shifted from purely internal development to an international focus. With China’s economic might shifting from internal to international, I see us moving into a new era where people in the West will soon be saying, “My parent company is from China,” instead of, “My parent company is active in China.” That has huge implications.

### **Q: What are the implications of these changes for business and for business educators?**

**De Silva:** Tremendous mind shifts are required as businesses adapt. As Chinese companies lift, expand and acquire international properties, they require cultural know-how and exposure to operating in western environments. Our Agricultural Bank of China EMBA program, in partnership with BMO in Canada, is an example of a major Chinese player being educated by us to get that know-how and experience. On the flip side, as multinationals’ economic value shifts to China and India, these markets can no longer be treated as outposts for rotating top executives. Serious talent development is required to create strong, sustainable local leadership with international know-how and vice versa. As business educators, we are in the centre of this.

### **Q: Do these changes impact the content and focus of the EMBA?**

**Slaughter:** As the number one producer of Asian cases in the world, Ivey has a wealth of material and expertise on Asian firms. Our goal now is to expand the production of cases and incorporate more of that material into all courses in both Asian and Canadian programs.

### **Q: What did Ivey do differently in 2010 in Hong Kong compared to five years ago?**

**Slaughter:** We are recruiting students from a broader area and doing more to recognize alumni. In the eight years I’ve been here, the biggest change I’ve seen is in the strength and size of the alumni base, and I would like to see greater engagement of the HBAs and MBAs.

**De Silva:** What we have with Asia is 12 years of experience—our first international experience base for Ivey—right in the living room of China. As we look at continued growth in Asia, we need to work with our India team as Ivey pursues its second international market. What made us successful when we entered China 12 years ago can no longer be replicated. A new Asia strategy that will enable the School holistically to optimize its impact on these major markets is critical.

### **Q: Leadership on Trial, now translated into Chinese, raised a lot of issues around the development of corporate cultures. Are you seeing changes in the corporate cultures and leadership development practices in Asia?**

**De Silva:** I see China as being disciplined in studying and learning from mistakes. There’s a famous Chinese saying, “to know the road ahead, ask those coming back.” So I think very much this financial crisis is something the Chinese will learn from, but will apply in their own way. Often organizations think their Western practices will work in China. In fact, they won’t because the culture, environment and the way information gets shared—the way decisions get made in Chinese organizations—isn’t the same.

If you would like to read the full interview on Ivey in Asia, please go to [ivey.ca/annualreport/ChinaInterview](http://ivey.ca/annualreport/ChinaInterview)

01 **ROD WHITE, HBA '74**  
Associate Dean, Faculty Development and Research

02 **DIANNE CUNNINGHAM**  
Director, Lawrence National Centre for Policy and Management



## RESEARCH

# Institutes move Ivey toward higher goals

AN OLD GERMAN PROVERB STATES THERE IS NO USE IN RUNNING IF YOU ARE NOT ON THE RIGHT ROAD, WHICH POINTS TO THE VALUE OF CAREFULLY CONSIDERING YOUR DESTINATION AND STRATEGY. THAT LESSON IS TAKEN TO HEART AT IVEY WHEN IT COMES TO STRATEGIC PLANNING FOR RESEARCH.

For Ivey, the strategy is global impact through a cross-enterprise approach to research that aligns faculty from diverse disciplines to solve some of the big issues facing businesses around the globe today.

In 2005, the School selected four initial areas where it believed it could have the most impact: leadership, sustainability, entrepreneurship and emerging markets. During the past four years, faculty across the School have rallied to support research in these areas and two centres—leadership and entrepreneurship—have grown into donor-funded research institutes.

“We are moving away from a model where our faculty just do their own thing to asking the faculty to coalesce with other members in their group, with new hires and around institutes. This allows our research and teaching to have greater impact,” says Rod White, HBA '74, Associate Dean, Faculty Development and Research. “We are being much

“We are being much more strategic on the research side and making institutional choices.”

more strategic on the research side. We are making institutional choices, and the School commits resources to strategic areas. We certainly support faculty in the pursuit of their personal research interests and goals but they are also encouraged to look for ways their research fits with areas of strategic importance to the School.”

In 2010, Ivey celebrated two significant milestones in its development of institutes. On September 21—on the heels of the launch of Ivey’s groundbreaking report on the future of leadership, *Leadership on Trial*—Ian O. Ihnatowycz, MBA '82, and his wife, Marta Witer, announced their \$3.5 million gift to support the formation of the Ian O. Ihnatowycz Institute for Leadership at Ivey. Combined with \$1.5 million in funding from The University of Western Ontario, Ivey received \$5 million in total for a Chair in Leadership and operational costs. Under the guidance of Ivey Associate Professor Gerard Seijts, the Institute’s Executive Director, the Ian O. Ihnatowycz Institute for Leadership aims to bring together research, teaching and outreach to demonstrate Ivey’s excellence in and commitment to leadership. This institute joins the Pierre L. Morrissette Institute for Entrepreneurship, which was established in 2006.

“Institutes allow for our research and teaching to be more collaborative and to have far greater reach and impact,” says White. “We stress our relevance—that we want to stay connected with practice.”

- 03 **PROFESSOR GUY HOLBURN**  
Head of Energy @ Ivey
- 04 **DIANNE CUNNINGHAM &  
PROFESSOR DAVID SPARLING**
- 05 **PROFESSOR DAVID SPARLING**  
Chair of Agri-Food Innovation and Regulation

RESEARCH

# Breaking new ground in public policy

Whether planning international policies for a secure global economy, addressing food and water challenges, promoting sustainable energy sector policies, or improving Canada's healthcare system, Ivey's specialty research groups and centres are making a difference in public policy.

2010 marked the launch of numerous key initiatives from groups—including the Lawrence National Centre for Policy and Management, Agri-Food@Ivey, Energy@Ivey and the Ivey Centre for Health Innovation and Leadership (ICHIL)—that will help to pave the way for major public policy changes.

Since its launch in 2009, ICHIL has provided direction for making Canada's healthcare system a source of sustainable advantage. The Centre launched a white paper earlier this fall that provided key recommendations for improving the efficiency and effectiveness of health care and took steps to build on these recommendations at its second global health conference in late November.

Dr. Kellie Leitch, ICHIL's Chair, argues Canada is not translating its world-class science and research into better results on the healthcare front lines. "We need to engage in more vigorous debate about how we imbed innovative thinking and continuous improvement into the culture of our healthcare system," says Leitch.

David Sparling, Chair of Agri-Food Innovation and Regulation, has also been calling for leaders to consider different approaches to problems. He submitted a paper to delegates at the G20 Summit in Toronto that promotes genetically-modified crops to feed the world, arguing improved food distribution alone will not be able to meet the world's future food demands.

The Lawrence National Centre, led by Dianne Cunningham, has been active on the policy front.



03



04

It helped spearhead a G20 Leaders' Symposium prior to the Summit to discuss how world leaders can stabilize the global economy.

"With government, business and academia at the same table, we would witness more effective and visionary public policy decisions. Canada would be the winner," says Cunningham.

The newly formed Energy@Ivey group, led by Professor Guy Holburn, has also been hard at work. It hosted a day-long conference last June attended by industry leaders from North America and Europe on how good governance and regulation practices can improve performance and investment in the electricity industry in Canada.

"Governance reforms that promote stability in the regulatory environment can stimulate significant levels of private investment," says Holburn.

Ivey faculty, in conjunction with industry experts on energy-sector reform, have written policy papers that have been presented to the government.



05

## Ivey researchers lauded

### THE ACCOLADES KEPT COMING FOR IVEY RESEARCHERS IN 2010 WITH SEVERAL FACULTY MEMBERS HONOURED FOR THEIR CONTRIBUTIONS TO SOCIETY.

**Paul Beamish** HBA '76, PhD '85, was selected as a fellow of the Royal Society of Canada (RSC), Canada's oldest and most prestigious organization of scientists and scholars. As well, Paul and three other Ivey PhD graduates—**Julian Birkinshaw**, PhD '91, **Andrew Delios**, PhD '98, and **Shige Makino**, PhD '95—were recognized in a list of 20 most productive scholars contributing to international business through papers in 29 journals between 1996 and 2008.

**Oana Branzei** was among a select group of emerging researchers to receive an Early Researcher Award for a promising research project. Professor Branzei was awarded government funding to research socially responsible markets and movements.

**Alison Konrad** was one of 17 Canadian women named to The International Alliance for Women (TIAW) "World of Difference 100" list as a result of her research on women on boards, which was cited as a critical pillar in the argument for putting more women on boards.

**Greg Zaric**, a Canada Research Chair in Health Care Management Science since 2006, received a five-year renewal via a Tier 2 Canada Research Chair award to continue his research to help the overburdened health-care system make better spending decisions.



## FACULTY Onboarding process helps faculty integrate

WHEN IT COMES TO ATTRACTING HIGH-CALIBRE FACULTY TO IVEY, YOU COULD SAY THE STARS HAVE ALIGNED IN THE SCHOOL'S FAVOUR. FACTORS SUCH AS THE RISE IN THE VALUE OF THE CANADIAN DOLLAR AGAINST ITS U.S. COUNTERPART, MAKING OUR SALARIES MORE COMPETITIVE, AND HIRING FREEZES IN OTHER PARTS OF THE WORLD—NOT TO MENTION THE ALLURE OF BEING PART OF A WORLD-CLASS INSTITUTION—HAVE MADE IVEY SHINE MORE BRIGHTLY THAN EVER FOR PROSPECTIVE FACULTY.

### New Ivey faculty bring diverse expertise and experience

In 2010, Ivey added 17 new faculty members from top international schools. This impressive group of professionals—the largest addition yet—reflects Ivey's high standards of excellence in both teaching and research and brings a broad range of cultural and regional backgrounds and research interests.

Rod White, HBA '74, Associate Dean, Faculty Development and Research, says the only parallel to this burgeoning portfolio was a faculty expansion in the late 1960s as a result of a 1959 Ford Foundation report. This report sparked curriculum reforms and greater research efforts at many business schools, including the founding of Ivey's doctoral program.

"In the late '60s and early '70s, we had a major influx of research-trained faculty and doctoral students. Prior to that, there weren't a lot of research-trained faculty members at business schools," says White.

"The 2010 faculty expansion is different. It's about growth at Ivey—growth that enables us to achieve our vision and have impact on a global scale."

While acknowledging this faculty boost was helped by a good market for hiring, White stresses that applicants were carefully scrutinized to ensure they were genuinely interested in Ivey, and that requires a passion for excellence in the classroom as well as in research.

"You still need to get the right people to come for the right reasons," he says. "We set out to hire the best candidates. Unlike many schools, we do not hire faculty solely to research for publication. That just results in two solitudes. We believe research must connect to the classroom and that means we select faculty who are conducting research that is relevant to the practising manager from Toronto to Mumbai."

Once they are in the door, there is an additional onboarding process to ensure new faculty adjust successfully to Ivey. Each new faculty member is assigned a mentor to assist in developing a balanced approach to teaching, research and case writing as well as a teaching coach to address course-specific issues.

"Our experienced faculty members have really stepped up on the mentoring/coaching role. Our annual faculty retreat last May focused entirely on setting in place the infrastructure required to support this new group of faculty in the first year," says White. "Everyone is involved. The Ivey Community has really come together to welcome its new members."

Besides the mentors and coaches, a new faculty welcome and orientation session was held just prior to the start of the academic year, which kicked off with a barbecue at the home of Dean Carol Stephenson. Discussion topics included Ivey's strategy, program overviews and case method of teaching. There are also twice-monthly lunch-and-learn sessions on topics such as evaluating students, Ivey's research centres and institutes and case writing and publications to provide new faculty with additional support and information in bite-sized, easy-to-digest chunks.

With such a large group to accommodate, the 2010 onboarding efforts have really gained momentum.

"The nice thing about bringing in a large group is that it has really focused our attention and efforts. When you have 17 new people, it makes a big difference in terms of really getting people to engage. And the level of engagement has been fabulous," says White. "It's a win for the faculty, a win for students and a win for the School."



## Meet Ivey's new faculty

### FULL TIME:

**NEIL BENDLE**, ASSISTANT PROFESSOR, MARKETING, joins Ivey from the University of Minnesota. A chartered accountant, he has a decade of experience in a variety of managerial roles, including with the Labour Party in the U.K. His research focuses on marketing. He has received honours for outstanding teaching.

**NIELS BILLOU**, MBA '96 ASSISTANT PROFESSOR, GENERAL MANAGEMENT, was a founding faculty member at the Hasso Plattner Institute School of Design Thinking at the University of Potsdam. His research explores innovative business models at the base of the economic pyramid as well as the strategic drivers of rapid growth for fast-growing firms.

**DARREN HENDERSON**, HBA '97 ASSISTANT PROFESSOR, MANAGERIAL ACCOUNTING AND CONTROL, returns to Ivey from the University of Waterloo. Prior to pursuing his PhD, Darren taught pre-business at Ivey. His research focuses on how to improve the accounting information used by capital market participants.

**CHARLICE HURST**, ASSISTANT PROFESSOR, ORGANIZATIONAL BEHAVIOUR, joins Ivey from the University of Florida. Her research interests include self-concept, moods and emotions, interpersonal relations, and social inequality.

**LYNN IMAI**, ASSISTANT PROFESSOR, ORGANIZATIONAL BEHAVIOUR, joins Ivey from the University of Maryland, College Park. Her research focuses on cross-cultural organizational behaviour with an emphasis on negotiation.

**YOON HEE KIM**, ASSISTANT PROFESSOR, OPERATIONS, comes to Ivey from the University of Wisconsin-Madison. Her research includes supply chain management and operations strategy.

**ROB MITCHELL**, ASSISTANT PROFESSOR, ENTREPRENEURSHIP, taught entrepreneurship and strategy at the University of Oklahoma. His current research investigates entrepreneurial decision-making.

**DANTE PIROUZ**, ASSISTANT PROFESSOR, MARKETING, brings 10 years of international experience in marketing. She joins Ivey from the University of California, Irvine. Her research interests include perception, cognition, decision-making, neuroeconomics, addictive consumption and social marketing.

**ALESSANDRO PREVITERO**, ASSISTANT PROFESSOR, FINANCE, joins Ivey from the Anderson School of Management, UCLA. His research is focused on household finance, corporate finance and economics. He has also studied the financial performance of listed soccer teams.

**HUBERT PUN**, ASSISTANT PROFESSOR, MANAGEMENT SCIENCE, brings expertise in operations management and decisions science. He is from the Kelley School of Management, Indiana University. His research interests include supply chain management and health care operations.

“You still need to get the right people to come for the right reasons. We set out to hire the best candidates.”

**BRIAN RICHTER**, ASSISTANT PROFESSOR, BUSINESS, ECONOMICS AND PUBLIC POLICY, joins Ivey from the Anderson School of Management, UCLA. His research interests include corporate interaction with governments as well as globalization, equity market liberalization, CSR.

**DINA RIBBINK**, ASSISTANT PROFESSOR, OPERATIONS, comes to Ivey from the University of Maryland. Her research focuses on buyer-supplier interactions and supply chain management. She has taught a wide variety of courses including international production management and global supply chain management.

**NING SU**, ASSISTANT PROFESSOR, INFORMATION SYSTEMS, joins Ivey from the Stern School of Business, New York University. He was previously an instructor at NYU, teaching classes at both the undergraduate and MBA levels. He brings expertise in global sourcing and information systems.

**MIKE VALENTE**, ASSISTANT PROFESSOR, GENERAL MANAGEMENT—CORPORATE SUSTAINABILITY, comes to Ivey from the University of Victoria. He has extensive experience in business and sustainability and the growing political role of the corporation, social entrepreneurship and sustainability.

**CHRIS WILLIAMS**, ASSISTANT PROFESSOR, INTERNATIONAL BUSINESS, comes to Ivey from Amsterdam Business School where he taught undergraduate, MBA and Executive courses. His research includes entrepreneurship and organization in multinational enterprises.

### PART TIME:

**CATHERINE (KATY) PAUL-CHOWDHURY**, PHD '99, ASSISTANT PROFESSOR, GENERAL MANAGEMENT, has extensive experience in management consulting. She has served as an Executive-in-Residence at Ivey, mentoring student teams on their consulting projects. She is also interested in organizational learning and well-being.

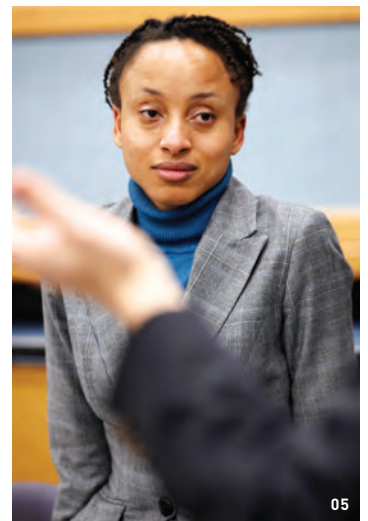
**DINO PUPULIN**, MBA '98 LECTURER, OPERATIONS, has extensive expertise in process improvement and change management. Prior to joining Ivey, he was an operations consultant with Ernst & Young Management Consulting specializing in lean manufacturing and entrepreneurial markets.



02



03



05



04

02 ALESSANDRO PREVITERO, DINA RIBBINK & KATY PAUL-CHOWDHURY

03 MIKE VALENTE

04 ROB MITCHELL

05 CHARLICE HURST



**“Just as a company needs strong leadership to succeed, Ivey needs strong leaders in our classrooms and research centres to sustain growth with quality.”**  
 Arkadi Kuhlmann, HBA '71, MBA '72  
 Campaign co-Chair



**“The volunteers and donors who have already stepped up to the challenge have helped us achieve unprecedented success.”**  
 Pierre Morrissette, MBA '72  
 Campaign co-Chair



**“This is about setting our sights high. Alumni understand and get excited about that. They see the School's vision as something that has lasting value for the whole country, so they're stepping up.”**  
 Joe Shlesinger, MBA '86  
 Campaign co-Chair

**CAMPAIGN  
 CO-CHAIRS' MESSAGE**

# Stepping up for the next generation

It is commonly said that there is power in teamwork and strength in numbers. Those sentiments certainly summed up last year when we launched the \$200 million Ivey Campaign for Leadership.

The Campaign is critical to the School's strategic growth and vision. It is funding additional world-class faculty, student leadership, increased research activities, PhD scholarships, and an iconic new building to reunite Ivey's programs together under one roof, and strengthening the Ivey Community. It is one of the most ambitious campaigns ever launched for a Canadian business school and we are proud to be the public faces of the effort.

We are also thrilled to report that, thanks to the remarkable generosity of Ivey's alumni and friends and the unwavering support of our volunteers, the School has secured more than \$157 million to date. What an extraordinary endorsement of Ivey's vision. Thank you!

There's a sense of pride in being part of a community that is growing in size and stature, and also in quality and distinction. And quite simply it is that sense of Ivey community and pride that is the driving force behind our Campaign accomplishments.

When Carol asked us to step up and co-Chair the Ivey Campaign for Leadership, it was the exciting vision for the School and the opportunity to have a hand in developing future business leaders that solidified our commitment and keeps us energized and engaged.

We know that we are not alone in our commitment. Since the Campaign began, more than 6,000 alumni have stepped up to support the School. Whether you are a loyal Annual Fund supporter or one of the more than 100 donors who've made a gift of \$100,000 or more, your investment in the future of the Ivey Business School and in Canada's next generations of business leaders is both appreciated and vital.

It is our pleasure to highlight a few of this year's outstanding donors and it is with our sincere thanks that we recognize every donor, each one of whom has made 2010 an extraordinary year.

Sincerely,

**ARKADI KUHLMANN, HBA '71, MBA '72**  
 CHAIRMAN & CEO, ING DIRECT

**PIERRE MORRISSETTE, MBA '72**  
 PRESIDENT, CEO & FOUNDER, PELMOREX MEDIA INC.

**JOSEPH SHLESINGER, MBA '86**  
 MANAGING DIRECTOR, CALLISTO CAPITAL LP

CAMPAIGN  
FOR LEADERSHIP

# Highlighting a year in gifts

THROUGHOUT 2010 MORE THAN 40 DONORS MADE GIFTS OF \$100,000 OR MORE. IT IS WITH OUR SINCERE THANKS THAT WE HIGHLIGHT A FEW OF THESE GIFTS AND RECOGNIZE ALL OF OUR GENEROUS DONORS IN THE ACCOMPANYING DONOR LISTINGS.

## BMO Financial Group

donated \$2 million in support of the new building. In recognition of their generosity the centrally-located, 640-seat auditorium will be named in BMO Financial Group's honour.



**John Currie**, HBA '60 donated \$300,000 to support the Pierre L. Morrissette Institute for Entrepreneurship's Entrepreneur-in-Residence program.

**Deloitte & Touche LLP** made a donation of \$250,000 to support the Ivey Centre for Health Innovation and Leadership, specifically the Ivey Consulting Project (ICP), with half of Deloitte's donation supporting ICP administration, project development and faculty time, and the remainder in pro bono services to support Ivey's health sector students throughout the year.



**John Francis**, HBA '86 and Western alumna **Susan E. Caskey**, BA (Huron) '87 made a gift of \$1.125 million with \$1 million dedicated to Ivey's new building and \$125,000 to endow an HBA scholarship.



**Ian Ihnatowycz**, MBA '82 and **Marta Witer** donated \$3.5 million to establish the Ian O. Ihnatowycz Institute for Leadership (see page 34).



**Pierre L. Morrissette**, MBA '72 made an additional donation of \$2.5 million with \$500,000 supporting Ivey's new building and \$2 million providing ongoing support for the School's Institute for Entrepreneurship named in his honour.



**Power Financial Corporation**, **Great-West Life**, **London Life** & **Canada Life** donated \$1.3 million of which \$300,000 supports the new building, and \$1 million is directed to Ivey's highest priority needs.



**Larry Rosen**, MBA/LLB '82 spearheaded a \$1 million donation in support of Ivey's new building from Harry Rosen Inc. to honour his father, Harry Rosen.

**Kathleen & Bill Troost**, MBA '75 donated \$1 million in honour of his 35th reunion. Their generous gift will be used to support leadership education at Ivey.

**W C Wood Foundation** led by **John F. Wood**, HBA '64 made a donation of \$250,000 in support of Ivey's new building.

**IAN IHNATOWYCZ, MBA '82**  
President, CEO and Founder, Acuity Investment Management Inc.



## CAMPAIGN FOR LEADERSHIP Gifts in action

IVEY ALUMNI HAVE ALWAYS PLAYED A CRITICAL ROLE IN THE SCHOOL'S GROWTH THROUGH THEIR COMMITMENT OF TIME, INSIGHTS AND FINANCIAL RESOURCES. HERE, WE TELL THE STORIES OF JUST TWO OF THE GENEROUS GIFTS RECEIVED IN 2010 AND GIVE HEARTFELT THANKS FOR THE EXTRAORDINARY GENEROSITY FROM ALUMNI, FRIENDS AND CORPORATIONS, WHO ARE DRIVING IVEY'S SUCCESS.

### Stepping up for Leadership

When it comes to defining leadership, Ian Ihnatowycz, MBA '82, maintains that leaders must lead by example. Known for bettering the world by encouraging sustainable investing as President, CEO and Founder of Acuity Investment Management Inc., he has again put his beliefs into action.

In September, Ian and his wife, Marta Witer, donated \$3.5 million to create the Ian O. Ihnatowycz Institute for Leadership at Ivey. Led by Ivey Professor Gerard Seijts, the Institute will focus on researching business leadership issues, developing teaching tools, and creating opportunities to showcase Ivey's excellence in leadership. Their donation supports a Chair in Leadership and operational funding for the Institute. The gift qualified for \$1.5 million in matching funds for the Chair from The University of Western Ontario, which increased the overall impact to \$5 million.

Prompted by the research that culminated in the publication of *Leadership on Trial: A Manifesto for Leadership Development*, which concluded the root cause of the 2008 financial meltdown was a failure in leadership at a multitude of levels in corporations, governments, as well as with regulators and consumers themselves, Ihnatowycz wanted to build on the report's proposals for preparing future leaders by launching an institute that could implement such ideas. In particular, Ihnatowycz was struck by the

"Ian is a passionate leader with a company that models the kind of organizational culture that the Institute strives to promote."  
Dean Carol Stephenson, O.C.

"The timing is perfect because of what has been happening in the business community. I've seen leadership failures and I felt compelled to do something."  
Ian Ihnatowycz, MBA '82

emphasis in *Leadership on Trial* on the importance of leadership character.

"Competencies determine what people CAN do—leadership character determines what they WILL do. Leadership character needs to be nurtured and developed. The Institute will help students with strong leadership aspirations to be better prepared for the challenges ahead and to exhibit professionalism and character," he says. "The timing is perfect because of what has been happening in the business community. I've seen leadership failures and I felt compelled to do something."

While Ivey has a long history in developing leaders, Ihnatowycz says he hopes the Institute will help to further cement Ivey's position as one of the world's top leadership schools.

"Having spent some time in leadership roles myself, I can appreciate how difficult it can be and how many challenges one has to surpass to achieve any level of success," says Ihnatowycz. "Ivey has demonstrated vision and leadership in recognizing that change was needed to better prepare students for their future leadership responsibilities."

Dean Stephenson says the School is proud to bear the Ihnatowycz name on its new leadership institute. "Ian is a passionate leader with a company that models the kind of organizational culture that the Institute strives to promote," she says.

"Leaders can be shaped by experience, guided by mentors, and influenced by any number of factors—from the books they read to the behaviour and actions of their contemporaries in the business community," Ihnatowycz explains. "This Institute will stand as further evidence that leadership abilities can also be improved and enhanced through purposeful study, inquiry and practice. We hope that it will have an important and far-reaching impact on business management practices throughout Canada and beyond its borders."

“Having a new facility that is modern and can attract the best students and faculty, and bring HBAs and MBAs together in the same building is significant.”

### Challenging alumni study groups to give back

When the new Ivey building eventually opens for classes it will hold a legacy from Bob Gibson, MBA '87, and Paul Moynihan, MBA '92.

One of the study rooms in the new building will bear the name Mustang Capital after the investment firm that Gibson, Moynihan and fellow Ivey alumnus Stephen Peacock, MBA '82, launched in Calgary in 2002. Mustang Capital has now been folded into Rothschild Canada, an independent financial advisory firm led by Ivey graduate David Drinkwater, HBA '70. Moynihan and Gibson are now Managing Directors for Rothschild's Calgary office, but the Mustang Capital name will live on at Ivey. Peacock retired from Mustang Capital in 2008.

“The name came from the Western Mustangs. It was what we all had in common—we were all Ivey graduates,” says Gibson. “Making a contribution toward a study room was the right feel for us. The students that will use it are going to work together for at least one or two years in a tight-knit small group and do some pretty cool things—that's the same kind of thing that we experienced at Mustang Capital.”

Although Gibson and Moynihan attended Ivey at different times and met while working together at TD Securities, they both have memories from their study groups and they encourage Ivey alumni with similar sentiments to follow their lead.

“We're throwing out a bit of a challenge,” says Gibson. “If other alumni keep in touch with members of their study groups, they should get together to do the same. We've even suggested it to some of our competitors that have Ivey graduates on their teams.”

While acknowledging the dire need for the new space at Ivey certainly prompted their gift, it was also meant as a way to thank Ivey for the contribution it made to their lives.

“Ivey has had quite an impact on me as to where I've ended up career-wise and otherwise. I figured if we are talking the talk about what the School has meant to us, we had better walk the walk and that resulted in our gift,” says Gibson.

Moynihan adds that his Ivey education was a factor in his switch to entrepreneurship and Mustang Capital wouldn't have existed otherwise.

“I never thought of myself as an entrepreneur, but the more we thought about it, we realized we did have the pedigree, the contact base and the expertise, particularly in the area of mergers and acquisitions, to create a niche for ourselves and an exciting career opportunity,” he says.

Moynihan and Gibson have been loyal Annual Fund donors and are active in the Ivey Alumni Network. Both were on the organizing committee of the Calgary events for the inaugural Global Ivey Day on November 4. That event brought back memories and reawakened a sense of pride in being an Ivey graduate. They say they hope future Ivey graduates will share that sense of pride, especially after experiencing Ivey life in the new state-of-the-art building and the advantages that come with it.

“Having a new facility that is modern and can attract the best students and faculty, and bring HBAs and MBAs together in the same building is significant. It fosters the best education that the School can offer so we had to provide our support,” says Moynihan. “Ivey has already seen both corporate Canada and its alumni stand up for it and we wanted to be part of that.”

Each with children who are now interested in attending Ivey, the future of education at Ivey is also top of mind.

“In our careers, we've been fortunate to see some tremendous business leaders and the impact they can have on an organization, but we have also seen some disastrous leaders and the impact of that on shareholders, employees and other stakeholders is significant,” says Moynihan. “You're preaching to the converted about the need to train very strong business leaders for future generations. That's a huge part of our society and we have a role to play to support that.”



**BOB GIBSON, MBA '87**  
Partner, Mustang Capital (top)

**PAUL MOYNIHAN, MBA '92**  
Partner, Mustang Capital (bottom)

FINANCIAL  
Operating  
Budget

	F2010 Actual (\$000)		F2009 Actual (\$000)	
<b>Revenue</b>				
Enrolment Grant	\$8,536	10.8%	\$8,007	10.7%
Tuition	\$40,030	50.8%	\$36,598	48.9%
Pre-Business Funding	\$1,788	2.3%	\$1,799	2.4%
Course Fees-Non-Degree Programs	\$9,357	11.9%	\$9,900	13.2%
Publishing	\$6,300	8.0%	\$4,787	6.4%
Conference Centres	\$7,152	9.1%	\$7,077	9.5%
Donations-Total	\$13,307	16.9%	\$9,096	12.1%
Less-Endowed & Restricted Donations	(\$10,374)	-13.2%	(\$6,470)	-8.6%
Endowment Interest	\$769	1.0%	\$1,346	1.8%
Recoveries & Miscellaneous	\$1,884	2.4%	\$2,726	3.6%
<b>Total Revenue</b>	<b>\$78,749</b>	<b>100%</b>	<b>\$74,866</b>	<b>100%</b>
<b>Direct Variable Expenses</b>				
Program Accommodation & Meals	\$6,885	8.7%	\$7,236	9.7%
Student & Teaching Materials	\$3,953	5.0%	\$2,934	3.9%
Scholarships & Financial Aid	\$2,888	3.7%	\$2,928	3.9%
Receptions	\$771	1.0%	\$861	1.2%
Other	\$327	0.4%	\$239	0.3%
<b>Total Direct Variable Costs</b>	<b>\$14,824</b>	<b>18.8%</b>	<b>\$14,198</b>	<b>19.0%</b>
<b>Contribution</b>	<b>\$63,925</b>	<b>81.2%</b>	<b>\$60,668</b>	<b>81.0%</b>
<b>Direct fixed expenses schedule</b>	<b>\$29,776</b>	<b>37.8%</b>	<b>\$29,863</b>	<b>39.9%</b>
<b>Administration expenses schedule</b>	<b>\$24,038</b>	<b>30.5%</b>	<b>\$23,115</b>	<b>30.9%</b>
<b>UWO Services</b>	<b>\$6,571</b>	<b>8.3%</b>	<b>\$6,463</b>	<b>8.6%</b>
<b>Surplus</b>	<b>\$3,540</b>	<b>4.5%</b>	<b>\$1,227</b>	<b>1.6%</b>

FINANCIAL  
**Schedule  
of Expenses**

	F2010 Actual (\$000)		F2009 Actual (\$000)	
<b>Direct Fixed Expenses</b>				
Faculty Salaries and Benefits	\$21,695	27.5%	\$21,576	28.8%
Faculty Fees	\$2,200	2.8%	\$2,863	3.8%
Utilities	\$289	0.4%	\$276	0.4%
Marketing & Recruiting	\$3,781	4.8%	\$3,514	4.7%
Property, Operations & Maintenance	\$302	0.4%	\$271	0.4%
Research	\$871	1.1%	\$898	1.2%
Computer equipment and software	\$609	0.8%	\$429	0.6%
Other Direct Fixed Expenses	\$29	0.0%	\$36	0.0%
<b>Total Direct Fixed Expenses</b>	<b>\$29,776</b>	<b>37.8%</b>	<b>\$29,863</b>	<b>39.9%</b>
<b>Administration Expenses</b>				
Staff Salaries & Benefits	\$13,331	16.9%	\$12,474	16.7%
Travel	\$1,018	1.3%	\$1,188	1.6%
Amortization	\$1,115	1.4%	\$1,183	1.6%
Bank Charges & Interest	\$440	0.6%	\$808	1.1%
Rentals Leases	\$82	0.1%	\$77	0.1%
General Administration	\$1,587	2.0%	\$1,097	1.5%
Mailing	\$244	0.3%	\$265	0.4%
Printing	\$298	0.4%	\$317	0.4%
Telephone	\$332	0.4%	\$382	0.5%
Building Rent	\$2,523	3.2%	\$2,404	3.2%
Building Alterations & Maintenance	\$540	0.7%	\$474	0.6%
Management fees	\$335	0.4%	\$365	0.5%
Training & Development	\$110	0.1%	\$154	0.2%
Consulting & Professional Fees	\$1,571	2.0%	\$1,211	1.6%
Other	\$512	0.7%	\$716	1.0%
<b>Total Administration Expenses</b>	<b>\$24,038</b>	<b>30.5%</b>	<b>\$23,115</b>	<b>30.9%</b>







IVEY INVESTORS

# Lifetime Giving

Recognizing Ivey's most generous supporters who have given the School \$25,000 or more cumulatively. This list reflects lifetime giving to Ivey as of December 31, 2010.

**\$10,000,000+**

Dr Henry Cheng  
HBA '71, MBA '72  
Richard M Ivey Family  
& Ivey Foundation

**\$5,000,000 to \$9,999,999**

ING DIRECT  
Pierre L Morrissette, MBA '72

**\$2,000,000 to \$4,999,999**

Anonymous  
Anonymous  
Anonymous  
BMO Financial Group  
Canadian Tire Corporation Ltd  
Corus Entertainment  
Great-West Life  
London Life & Canada Life  
Carol & Paul Hill, MBA '69  
Ian Ihnatowycz, MBA '82  
& Marta Witer  
Jon Love, HBA '76  
Nancy Yeomans Love, HBA '76  
& Christie Love, MBA '06  
Paul R MacPherson, MBA '63  
Power Financial Corporation  
RBC  
C John Schumacher, MBA '84  
Scotiabank  
TD Bank Group

**\$1,000,000 to \$1,999,999**

Ralph M Barford  
Bill & Anne Brock Family  
MBA '63  
Andy Chisholm, MBA '85  
CIBC  
Brendan R Clouston, MBA '79  
David W Cornhill, MBA '80  
John A K Francis, HBA '86  
Ivey Alumni Association  
Toronto Chapter  
Richard & Jean Ivey Fund  
Donald K Johnson, MBA '63  
KPMG Enterprise  
Arkadi Kuhlmann  
HBA '71, MBA '72  
Lee Foundation  
Eugene & Lori Melnyk  
PMAC Canada  
Larry J Rosen, LLB/MBA '82  
Donald L Triggs, MBA '68  
Kathleen & Bill Troost, MBA '75

**\$500,000 to \$999,999**

John Adamson, MBA '72  
J Armand Bombardier  
Foundation  
Canadian Pacific Ltd  
G Mark Curry, MBA '69  
Ernst & Young Toronto  
William H Fuller, MBA '61  
Globe & Mail  
Goldman Sachs Group Inc  
Donald K Jackson, MBA '67  
Michael M Kanovsky, MBA '73  
David Kassie, MBA '79  
& Susan Harris, MBA '82  
Heather & Fraser Latta  
HBA '76  
MacLean Hunter Ltd  
MBA Association  
Nanyang Business School  
Nortel Networks Corporation  
Shaw Communications Inc  
William Shurniak

**\$250,000 to \$499,999**

AstraZeneca  
E Scott Beattie  
HBA '81, MBA '86  
Robert V Brouillard, MBA '66  
Alexander F L Chan, HBA '78  
Citigroup Inc & Citibank Canada  
John R Currie, HBA '60  
Deloitte & Touche LLP  
John Dobson Foundation  
Export Development Canada  
Margaret & Jim Fleck  
HBA '53  
Ford Motor Company of  
Canada Ltd  
Foundation Western  
& Alumni Western  
George Weston Limited  
Geoff Gudewill, MBA '83  
Nick Gudewill, MBA '74  
Peter Gudewill, HBA '73  
Sam Gudewill, HBA '77  
Debra and Brian Heald  
MBA '85  
HongKong Pei Hua  
Education Foundation  
HSBC Bank  
Louis Lagasse, MBA '73  
Daniel Lam, EMBA '00  
S W Eddie Law, HBA '91  
Stephen D Lister, MBA '85  
Medtronic of Canada Ltd  
National Bank Financial  
Markets

Linda & Kevin O'Leary  
MBA '80  
PricewaterhouseCoopers LLP  
Bruce H Reid, MBA '64  
Richardson Foundation  
Roman Corporation Ltd  
Richard E Rooney, MBA '81  
Paul Sabourin, MBA '80  
The Shlesinger Family  
W Keith Smith, MBA '60  
Society of Management  
Accountants of Ontario  
Valleydene Corporation Ltd  
The Late Brigadier F C Wallace  
& the Late Vera Isobel Wallace  
W C Wood Foundation

**\$100,000 to \$249,999**

Anonymous  
Anonymous  
Anonymous  
Abitibi-Price Inc  
Accenture Inc  
Adobe Corp  
Gwen & the Late Ben Anders  
HBA '47, MBA '48  
Angiotech Pharmaceuticals Inc  
Donald F Archibald, MBA '85  
Nora Aufreiter, HBA '81 &  
Lawrence Pentland, HBA '81  
Tom Bailey, MBA '62  
Bain & Company Canada Inc  
Thomas K Barber, MBA '79  
Bayer Inc  
Beacon Securities Ltd  
Dr Francesco Bellini  
Biogen Idec Canada  
Biovail Corporation  
Betty & the Late  
Bruce Birmingham  
Boston Consulting Group  
David Braley  
Thomas H Brent, HBA '59  
Ronald Bresler, MBA '83  
Burgundy Asset  
Management Ltd  
Christopher M Burley, MBA '87  
Alice & Grant Burton, MBA '68  
Audrey & Donald Campbell  
Foundation  
Laurie Campbell, MBA '89  
Canadian International  
Development Agency  
Ciba-Geigy Canada  
Robert A R Clouston, MBA '72  
Lisa Colnett, HBA '81  
Scott Cooper, HBA '82

George A Cope, HBA '84  
Bea & Purdy Crawford  
Carolyn M H Cross, HBA '84  
Simon Tin-Yin Cua, EMBA '05  
James B Cumming, HBA '73  
Nelson M Davis Trust Fund  
George S Dembroski, HBA '56  
Darin Deschamps, HBA '87  
& Lisa Deschamps, HBA '87  
Daniel A Devlin, HBA '81  
Eli Lilly Canada Inc  
ERA Foundation  
Dr & Mrs Geno F Francolini  
HBA '54  
General Motors of Canada Ltd  
Gilead Sciences Canada Inc  
GlaxoSmithKline Inc  
Ken R Good Family  
Robert J Gorman, MBA '77  
HBA Association  
Lana & Tim Hockey, EMBA '97  
Timothy Hodgson, MBA '88  
& Linda Netten  
Lonsdale Holland, MBA '57  
Colin L Hubling, HBA '53  
IBK Capital Corp  
IBM Canada Ltd  
William J Jandrisits  
HBA '83, MBA '90  
Jarislowsky Foundation  
Kao Ying Lun, John, HBA '76  
Roland T Keiper, HBA '82  
Gerald L Knowlton, HBA '54  
Kraft Foods Inc  
Nicole & Gilles Lamoureux  
MBA '66  
Landmark Communications  
Foundation  
Pierre Lapointe, MBA '83  
Dr Michiel R Leenders, MBA '59  
Terry A Lyons, MBA '74  
Tim MacDonald, HBA '81  
Magna International Inc  
Manulife Financial Corp  
Maple Leaf Foods Inc  
Chris R Matthews, MBA '72  
Chris & Michael McCain  
HBA '79  
Steve McDonald, MBA '83  
McKesson Canada  
McKinsey & Company  
MDS Inc  
Michelle & Patrick Meneley  
MBA '90  
Merck Frosst Canada Inc  
Mical Equities Ltd  
Michael Needham, MBA '68

Nesbitt Family, HBA '78  
Jeffrey Orr, HBA '81  
& Suzanne Legge  
Gilles G G Ouellette  
HBA '69, MBA '70  
Michael & Margot Phair/  
Phair Family Foundation  
Pelmorex Media Inc  
Petro-Canada Inc  
Picchio International  
Pierre Pomerleau, MBA '89  
PQR Ltd  
PreMD Inc  
C James Prieur, MBA '75  
Procter & Gamble Inc  
Purchase Family  
Dipak Rastogi, MBA '82  
Hartley Richardson  
Randy B M Royer, HBA '77  
S C Johnson & Son Ltd  
Kishore K Sakhrani, MBA '83  
Larry A Shaw, HBA '62  
John H Simpson, HBA '76  
Staffen Family  
Carol Stephenson  
The Late Lawrence G Tapp  
TELUS Corporation  
TMX Group  
Torys  
Maria Smith & Eric Tripp  
MBA '83  
Serge Turko, MBA '87  
George B Turnbull, HBA '49  
Mr & Mrs F Peter von Muralt-Lö  
W Garfield Weston Foundation  
Mark Wellings, MBA '96  
Gale & Bill White, MBA '69  
Libby & Charles Winograd  
MBA '71  
Andrew B Wiswell, MBA '80

**\$50,000 to \$99,999**

Anonymous  
Anonymous  
3M Canada Company  
A T Kearney Ltd  
Wayne D Adlam, MBA '86  
Ian Aitken, HBA '87  
John Akkerman, MBA '87  
Alberta Performing Arts  
Stabilization Fund  
ArcelorMittal Dofasco Inc  
Yvonne & Ross Archibald  
HBA '58  
Paul J Atkinson, HBA '86

Jean L and Walter R Badun  
DBA '55, MBA '57  
Barrick Gold Corporation  
Brett E B Barakett, HBA '88  
& Jim Leech  
Deborah Barrett, HBA '80  
& Jim Leech  
Bell Canada  
Zena & John Besterd, HBA '78  
The Better Hong Kong  
Foundation  
Bombardier Inc  
Thomas Bradley, MBA '83  
& Lori Lothian  
Dr Francesco Braga  
John Bragg  
Judy & Murray Bryant  
J Judd Buchanan, MBA '55  
Brent C Buckner, MBA '95  
Business Families Foundation  
Camco Inc  
Colleen Campbell, HBA '80  
& Stuart MacGregor, MBA '79  
Paul F Campbell, MBA '90  
Castlepoint Investments Inc  
Shody Chow, MBA '69  
Sylvia D Chrominska, HBA '75  
The Berdie & Irvin Cohen  
Fund for Doctoral Business  
Scholarship  
Mark M Cowie, HBA '80  
Robert D Crockford, HBA '70  
Patrick G C Crowley, HBA '74  
Richard J Currie  
Don Darroch, HBA '73  
& Sandy Wood  
Tim Dattels, HBA '80  
& Kristine Johnson  
Gillian H Denham, HBA '83  
& Stephen O Marshall  
Steve Dent, MBA '89  
& Janet Maclaren, MBA '89  
Alexandra & Camillo Di Prata  
MBA '87  
Jeff Dossett, HBA '83  
& Sue Dossett, MBA '84  
Kirsten Feldman, MBA '84  
Barbara Fraser, HBA '71  
& Ian Fraser, HBA '71  
Bruce R Gall, MBA '69  
Jim Gallagher, MBA '79  
General Atlantic Group Ltd  
General Electric Canada Inc  
General Mills Canada Inc  
Gerald Schwartz &  
Heather Reisman Foundation  
Robert W Gibson, MBA '87  
Serge Gouin, HBA '65, MBA '66  
Janet C Griffin, MBA '88  
& Jock W MacDonald, MBA '88

Edward J Gudaitis, MBA '93  
 Doug Guzman, HBA '88  
 & Sheila Brown  
 R Keith Harfield, HBA '70  
 Todd Hargarten, MBA '93  
 & Sarah Morgenstern, MBA '93  
 Michael B Hill, HBA '89  
 David Holmes, HBA '73  
 The Hopper Family  
 Tom and Verna Howard  
 MBA '72  
 Jim Hunter, MBA '76  
 & Heather Hunter, MBA '76  
 Hydro One Employees  
 & Pensioners Charity Trust  
 Imperial Oil Ltd  
 John G Inch, HBA '91  
 J D Irving Ltd  
 Franklin G Jacobs, MBA '76  
 C B Johnston Family  
 Edward J Kernaghan, HBA '65  
 Donald G Lang, HBA '80  
 Bruce Ling, MBA '79  
 Robert W Luba, MBA '67  
 Anne & Jay MacAulay, MBA '71  
 Hugh MacDiarmid, MBA '74  
 Don MacDonald  
 Natalie MacLean, MBA '92  
 & Andrew Waitman, MBA '92  
 Peter T Main, HBA '64  
 Maple Leaf Capital LLP  
 Jack H Matthews, MBA '83  
 Craig P Mayor  
 HBA '73, MBA '76  
 Robert G McFarlane, MBA '85  
 Doug McGregor  
 HBA '79, MBA '82  
 Merrill Lynch Canada Inc  
 Paul J D Miller, MBA '84  
 Monitor Company  
 Morgan Stanley Canada Ltd  
 Paul E Moynihan, MBA '92  
 Nortel Networks (Asia) Ltd  
 Alexandra & Robert Nourse,  
 MBA '64  
 NUCRO-TECHNICS  
 Onex Corporation  
 Wade Oosterman, MBA '86  
 & Wendy A Adams  
 HBA '82, MBA '86  
 Osler Hoskin & Harcourt  
 Research in Motion  
 Pierre Rivard, MBA '83  
 & Catherine Paquet  
 RLG International  
 Harry & Evelyn Rosen  
 Peter Samson, HBA '87  
 & Cathy Williamson, HBA '87

Lawrie Savage, MBA '73  
 Michael C Shannon, MBA '83  
 Peter Sharpe  
 Mrs Lorraine Shuttleworth  
 Lino (Lee) Sienna, HBA '74  
 Douglas E Speers, MBA '70  
 Stockgroup  
 Barbara G Stymiest, HBA '78  
 Olga & Sergei Tchvetrnykh  
 MBA '94  
 Susanne & Martin Thrasher  
 HBA '73  
 Valford Holdings Ltd  
 Anthony von Mandl  
 David J Walker, MBA '58  
 Michael E Wexler, HBA '93  
 Mark Whitmore, MBA '91  
 Donald Woodley, MBA '70

**\$25,000 to \$49,999**

.....  
 Anonymous  
 Anonymous  
 Anonymous  
 Anonymous  
 Anonymous  
 Anonymous  
 Anonymous  
 Anonymous  
 Anonymous  
 James R Alexander  
 Alumni Computer Group Ltd  
 William D Anderson, HBA '72  
 G F Kym Anthony, MBA '80  
 David S Anyon, EMBA '97  
 Hugh D Babowal, MBA '97  
 Bruce Barker  
 Andrew W Barnicke, HBA '83  
 BC Hydro  
 Dr Paul W Beamish  
 HBA '76, PhD '85  
 Jalynn H Bennett  
 Michael Bernstein, MBA '96  
 & Nan Dasgupta, MBA '96  
 Robert G. Bertram  
 James A Bertrand, MBA '83  
 Austin C Beutel  
 Andre M Boysen, EMBA '99  
 James Brodeur, MBA '62  
 Charles W Brown, MBA '83  
 Stewart C Burton, HBA '81  
 Perry Caicco, MBA '83  
 Cameron H Calder, HBA '53  
 Caldwell Partners  
 International Inc  
 Yolanda & David Campbell  
 HBA '93  
 Capital C

Ron Charles, MBA '71  
 W John Charman, MBA '70  
 Wilson Choy, HBA '79, EMBA '01  
 C David Clark, MBA '66  
 C Greig Clark, HBA '74  
 Ronald G Close, HBA '81  
 Daniel R Coholan, MBA '87  
 Coinamatic Inc  
 Concordia Insurance Corp  
 Connor Clark & Lunn  
 Financial Group  
 John D Crabb, HBA '66  
 Karen A Crich, HBA '92  
 Art Crooks, MBA '63  
 Mark Cullen, MBA '71  
 Dann Cushing, HBA '00  
 David P Dal Bello, HBA '90  
 Kevin Dalton, HBA '90  
 & Kelley Dalton, HBA '90  
 La Fondation De Gaspe  
 Beaubien  
 Paul Derksen, HBA '75  
 Paul G Desmarais  
 Cynthia J Devine, HBA '87  
 Navjeet Dhillon, EMBA '98  
 Dino A DiCienzo, HBA '87  
 David S C Dobell, MBA '89  
 Thomas Ebbert, MBA '89  
 Izzeldin A Elkhazin  
 HBA '71, MBA '72  
 Exxon Energy Ltd  
 Rhys T Eyton, HBA '58  
 Federation of Chinese Canadian  
 Professionals (Ontario)  
 Education Foundation  
 Fleck Manufacturing Inc  
 Jean-Louis Fontaine, MBA '77  
 William J Furlong, MBA '87  
 Steven Yaron Garmaise, MBA '83  
 Endla & John Gilmour  
 Foundation  
 Gluskin Sheff & Associates  
 Alex E Graham, MBA '89  
 Sheldon Greenspan, HBA '90  
 William Bell Grieves  
 Peter Grosskopf  
 HBA '87, MBA '90  
 GSW Inc  
 Greg Guatto, HBA '90  
 & Tracy Guatto, HBA '90  
 Keith R Halpenny, HBA '55  
 Jean & Ken Harrigan, HBA '51  
 Geoffrey Haydon, HBA '87  
 Daniel Hebert, MBA '81  
 Mark Herman, MBA '84  
 & Jan Herman, MBA '84

Hicks Morley Hamilton  
 Stewart Storie LLP  
 Holcim (Canada) Inc  
 Donald C Hoffhine, MBA '74  
 Tony J Horak, MBA '75  
 Horst E Hueniken, MBA '87  
 Investors Group Inc  
 Doug Irwin, MBA '81  
 & Margot Jones, MBA '82  
 Terry A Jackson, MBA '73  
 James Richardson & Sons Ltd  
 Pamela Jeffery  
 HBA '84, MBA '88  
 Brian R Jones, MBA '74  
 & Karen L Weaver-Jones  
 Brian W Jones, HBA '74  
 Peter J Karrys, MBA '90  
 Wendy MacKinnon-Keith  
 MBA '89  
 Peter Kenny, MBA '57  
 Richard L Knowles, HBA '73  
 Marisa Kwok, HBA '77  
 A Craig Lahmer, MBA '74  
 Gordon Lackenbauer  
 HBA '68 & Joyce Trapp  
 Douglas M Lambert  
 HBA '69, MBA '71  
 Claude & Lorraine Lamoureux  
 LEADER Project  
 Steve Lear, HBA '80  
 Mark J Lewis, HBA '90  
 Lee Seng Wee, MBA '54  
 Betty-Anne Lindsay, MBA '81  
 & Tom Lindsay, MBA '81  
 Thomas & Rosemary Logan  
 Macquarie Capital Markets Ltd  
 Maxine MacLure, MBA '80  
 Christine A Magee, HBA '82  
 David L Mayhew, HBA '74  
 Scott McCain  
 Wallace McCain  
 Rosemarie McClean  
 McCormick Canada Inc  
 Donald & Marion McDougall  
 MBA '61  
 Raymond McFeetors  
 Stephanie & Ian McLagan  
 MBA '92  
 Tim McGuire, HBA '83  
 Steven N S McMurray, HBA '80  
 The Late Ted Medland  
 L Jacques Menard, O.C.  
 MBA '70  
 Maggie & John Mitchell  
 MBA '78  
 David Montanera, HBA '84  
 Philip F D Moorcroft, MBA '97

Marti Morfitt, HBA '79  
 & Patrick Weber  
 Hugh Morris, HBA '53  
 Lenny Moy, MBA '84  
 Sean C V Mullin, HBA '84  
 Wendy Murdock, MBA '82  
 Nintendo of America Inc  
 Dr H B Brent & Julie Norton  
 MBA '89  
 Andrea & Kevin O'Brien, HBA '93  
 Oliver Wyman  
 Robert Olsen, MBA '88  
 Allan Olson, MBA '65  
 Nicholas W Paine, HBA '83  
 J Bruce Pearson, MBA '58  
 Neil & Leanne Petroff  
 Paul K Pew, HBA '87  
 Michael Phelps  
 Ron A Plashkes, HBA '80  
 PMAC Mississauga District  
 Prudential Assurance Company  
 Michael W Pun, HBA '89  
 Bill Quinn, HBA '85, MBA '89  
 William J Quinn, HBA '81  
 Anton R Rabie, HBA '94  
 Robert S Rawlings, HBA '51  
 Tasha & David Rawlings  
 HBA '96  
 Douglas M Reid, HBA '58  
 Rob Richards, MBA '70  
 Robyn & Gordon Ritchie  
 MBA '77  
 Russel Robertson, HBA '69  
 Lisanne & Jim Rogers, MBA '90  
 Bruce Rothney, MBA '89 &  
 Lisa Rothney, HBA '85, MBA '89  
 Rothmans Benson & Hedges  
 John A Rothschild, MBA '73  
 RSM Richter LLP  
 Salomon Smith Barney Inc  
 Harolde Savoy, MBA '84  
 Michael S Schwenger, HBA '74  
 Alan G Sellery, HBA '87  
 C Richard Sharpe, HBA '50  
 Heather Shaw, MBA '87  
 Donald R Sheldon, MBA '69  
 Bruce M Shirreff  
 HBA '74, MBA '77  
 Curt Sigfstead, MBA '97  
 & Lara Witter, MBA '97  
 Peter Simon, HBA '86  
 Alastair W Sloan, HBA '86  
 Dr Ian A Sloan  
 Keith Smith, MBA '75  
 Spin Master Ltd  
 Andy & Helen Spriet

Richard Stephenson, MBA '93  
 Lorne M Stone, MBA '68  
 Suncor Energy Inc  
 Stephen A Suske, MBA '77  
 Richard Talbot  
 HBA '86, MBA '91  
 Lawrence Tanenbaum  
 Karen J Taylor, MBA '92  
 Ronald E Taylor, MBA '71  
 Teck Resources Ltd  
 Tembec Inc  
 Robert Olsen, MBA '88  
 Allan Olson, MBA '65  
 Nicholas W Paine, HBA '83  
 J Bruce Pearson, MBA '58  
 Neil & Leanne Petroff  
 Paul K Pew, HBA '87  
 Michael Phelps  
 Ron A Plashkes, HBA '80  
 PMAC Mississauga District  
 Prudential Assurance Company  
 Michael W Pun, HBA '89  
 Bill Quinn, HBA '85, MBA '89  
 William J Quinn, HBA '81  
 Anton R Rabie, HBA '94  
 Robert S Rawlings, HBA '51  
 Tasha & David Rawlings  
 HBA '96  
 Douglas M Reid, HBA '58  
 Rob Richards, MBA '70  
 Robyn & Gordon Ritchie  
 MBA '77  
 Russel Robertson, HBA '69  
 Lisanne & Jim Rogers, MBA '90  
 Bruce Rothney, MBA '89 &  
 Lisa Rothney, HBA '85, MBA '89  
 Rothmans Benson & Hedges  
 John A Rothschild, MBA '73  
 RSM Richter LLP  
 Salomon Smith Barney Inc  
 Harolde Savoy, MBA '84  
 Michael S Schwenger, HBA '74  
 Alan G Sellery, HBA '87  
 C Richard Sharpe, HBA '50  
 Heather Shaw, MBA '87  
 Donald R Sheldon, MBA '69  
 Bruce M Shirreff  
 HBA '74, MBA '77  
 Curt Sigfstead, MBA '97  
 & Lara Witter, MBA '97  
 Peter Simon, HBA '86  
 Alastair W Sloan, HBA '86  
 Dr Ian A Sloan  
 Keith Smith, MBA '75  
 Spin Master Ltd  
 Andy & Helen Spriet

# CLASS GIVING MBA

In recognition of their loyal support, donors who have supported the School for five or more consecutive years are listed in bold.

## IVEY SOCIETY LEADERSHIP LEVELS

Founders' Circle: \$10,000+ Deans' Circle: \$5,000-9,999 Patron: \$2,500-4,999  
Benefactor: \$1,000-2,499 The First Decade Society: \$100-\$999

### MBA 1947

Herbert M Ballantyne  
Lawrence J Martello

### MBA 1948

IVEY SOCIETY,  
DEANS' CIRCLE  
**Gwen Anders**

### MBA 1952

**Richard H Carr**  
George P Hanna  
James McGinn

### MBA 1953

IVEY SOCIETY, BENEFACTOR  
Donna & Fred Berlet

### MBA 1954

IVEY SOCIETY, PATRON  
Lee Seng Wee  
OTHER ANNUAL  
FUND CONTRIBUTIONS  
**George Dorrance**  
Harold J Mandel

### MBA 1955

IVEY SOCIETY,  
FOUNDERS' CIRCLE  
J Judd Buchanan  
OTHER ANNUAL  
FUND CONTRIBUTIONS  
J Camille Brouard  
Donald J Chisholm  
Mohindar S Gill

### MBA 1956

Keith Ham  
Leslie G Ham  
Robert J McLaughlin  
George Suart

### MBA 1957

IVEY SOCIETY,  
FOUNDERS' CIRCLE  
**Peter Kenny**  
IVEY SOCIETY, BENEFACTOR  
**Norman M Alexander**  
**Barbara & Andrew Grindlay**  
Dr Albert R Wood &  
Dr Vivian Wood  
OTHER ANNUAL  
FUND CONTRIBUTIONS  
Frederick Davediuk  
Robert E Fielding  
George Guy  
Donald Lee

George E Pink  
Archibald I Wilkinson

### MBA 1958

IVEY SOCIETY,  
DEANS' CIRCLE  
**David J Walker**  
OTHER ANNUAL  
FUND CONTRIBUTIONS  
Kenneth J Arthur  
**Don Badke**  
Brian P Drummond  
George W Fenwick  
James G Kirkland  
William A West

### MBA 1959

IVEY SOCIETY,  
FOUNDERS' CIRCLE  
**Dr Michiel R Leenders**  
OTHER ANNUAL  
FUND CONTRIBUTIONS  
Gilbert C Berringer  
Casper Bloom  
Ronald T Lane  
**Donald H Mallory**  
**John St C Ross**  
Patrick Rourke  
**Jack T Wood**

### MBA 1960

**Total: \$29,496**  
**Participation: 59%**  
IVEY SOCIETY,  
FOUNDERS' CIRCLE  
Ron McCullough  
**W Keith Smith**  
OTHER ANNUAL  
FUND CONTRIBUTIONS  
Anonymous  
Al & Judy Abbott  
Dr Allan G Blair  
John D Campbell  
R Glen Caughey  
**John G Chamberland**  
Dr John C Courtney  
Peter V Dawson  
James M Dowie  
W J Larry Duncan  
Francis M Edgell  
Dr Joseph N Fry  
**Arthur Grunder**  
Raymond A Hensel  
Ernie W T Hnatiuk  
Ronald P Jaeggin  
John W Kelly  
Norm Knutson  
Robert E Leverette

John H Matthews  
**Lynne & Paul McCre**  
G Duncan McTaggart  
Peter W Morse

**John Mustard**  
Lynn & Len Pakulak  
**Patrick Rourke**  
Thomas F Schopflocher  
Terence B Stone  
**John D Thompson**  
Paul C White  
Donald O Wood

### MBA 1961

**Total: \$16,422**  
**Participation: 26%**  
IVEY SOCIETY,  
FOUNDERS' CIRCLE  
**William H Fuller**  
IVEY SOCIETY,  
DEANS' CIRCLE  
William K Douglas  
IVEY SOCIETY, BENEFACTOR  
**Donald W Whitmore**  
OTHER ANNUAL  
FUND CONTRIBUTIONS  
**Ralph C Addison**  
Dr Abad Ahmad  
Colin R Barclay  
**Lawrence Burpee**  
John W Hethrington  
**L Karl D Hinds**  
**Dr & Mrs John A Humphrey**  
**George W Lange**  
Kevin E McAllindon  
Ronald M Walenius

### MBA 1962

**Total: \$8,400**  
**Participation: 24%**  
IVEY SOCIETY, PATRON  
**James Brodeur**  
IVEY SOCIETY, BENEFACTOR  
Martin M Farnsworth  
**Miguel Fernandez**  
Allan D Laird  
OTHER ANNUAL  
FUND CONTRIBUTIONS  
Pierre Bergeron  
Andrew Billingsley  
**C G Davidson**  
Hemendra P Desai  
James Donaghy  
**Thomas A Foulkes**  
Kenneth M Keith  
**Gus Leach**  
Antonius A Madlener  
Ian Muncaster

George A Robinson  
Paul Seubert

### MBA 1963

**Total: \$16,437**  
**Participation: 22%**  
IVEY SOCIETY,  
DEANS' CIRCLE  
**Donald K Johnson**  
IVEY SOCIETY, PATRON  
Art Crooks  
IVEY SOCIETY, BENEFACTOR  
William A Fast  
Sydney McMorrin  
Darcy G Rector  
**David Tarr**  
OTHER ANNUAL  
FUND CONTRIBUTIONS  
Richard J Chase  
Cam Davreux  
**John R Dick**  
Nandlal Harsora  
Peter Knoepfli  
Brian K Laxdal  
Bob McBurney  
**Robert B McElhinney**  
Lawrence F Organ  
James G Ridler  
George Schroeder

### MBA 1964

**Total: \$4,487**  
**Participation: 22%**  
IVEY SOCIETY,  
FOUNDERS' CIRCLE  
Bruce H Reid  
IVEY SOCIETY, BENEFACTOR  
**Pierre Lepine**  
Elio J Sasso  
OTHER ANNUAL  
FUND CONTRIBUTIONS  
**Robert C Bryce**  
William D Cochrane  
**Janet & Douglas Davis**  
John D Fergusson  
D M & J A Finlayson  
Earl S Humphreys  
Bill & Doreen Magyar  
**Alexandra & Robert Nourse**  
Peter E Pitsiladis  
Seigfried Schranz  
Blake J Sherman  
J E (Bud) Tangney

### MBA 1965

**Total: \$2,600**  
**Participation: 14%**  
Anonymous  
Dennis J Ayden

Francois R Bechard  
Morley Handford  
**Kevin R S Larkin**  
A Bruce McDonald  
Harold B Nickerson  
**Joan E Nolting**  
David Preston  
John R Quattrocchi  
Guy Tourillon

### MBA 1966

**Total: \$31,700**  
**Participation: 13%**  
IVEY SOCIETY,  
FOUNDERS' CIRCLE  
**Robert V Brouillard**  
**Nicole & Gilles Lamoureux**  
OTHER ANNUAL  
FUND CONTRIBUTIONS  
John O Baatz  
**Burke Corbet**  
**Fraser R Lindsay**  
Bernard W Matte  
**David J W Rumpel**  
Clair Shields  
Michael W Stedman  
Terry Trecarten  
Jim Wyse

### MBA 1967

**Total: \$26,202**  
**Participation: 18%**  
IVEY SOCIETY,  
FOUNDERS' CIRCLE  
William I Campbell  
The Late Dr R Allan Patterson  
OTHER ANNUAL  
FUND CONTRIBUTIONS  
Anonymous  
Anonymous  
Douglas Bock  
Pierre Boulanger  
John D Buchanan  
Richard D Clark  
Marc Delisle  
**Charles Dillingham**  
Ronald D Dooley  
J Patrick Ellwood  
**James A Erskine**  
Jerome Gendron  
Douglas A Grant  
**Robert B Hasler**  
Roderick G Jack

### MBA 1968

**Total: \$36,772**  
**Participation: 16%**  
IVEY SOCIETY,  
FOUNDERS' CIRCLE  
**Michael Needham**

IVEY SOCIETY,  
DEANS' CIRCLE  
**Gordon Lackenbauer &  
Joyce Trapp**  
IVEY SOCIETY, PATRON  
**Lorne M Stone**  
IVEY SOCIETY, BENEFACTOR  
**Robert L Brooks**  
OTHER ANNUAL  
FUND CONTRIBUTIONS  
Anonymous  
**Ronald J Beath**  
**Terrence L Bedard**  
Ronald F J Browne  
Allan C Chartrand  
**Michel David**  
Hugh D Goodwillie  
Robert E Keller  
**Kerin Lloyd**  
**Theodore B Metzging**  
Aron L Steinman  
Thomas S Warren

### MBA 1969

**Total: \$49,607**  
**Participation: 10%**  
IVEY SOCIETY,  
FOUNDERS' CIRCLE  
**Carol & Paul Hill**  
**Gale & Bill White**  
IVEY SOCIETY, PATRON  
Mark G Wheaton  
IVEY SOCIETY, BENEFACTOR  
David C McPhillips  
OTHER ANNUAL  
FUND CONTRIBUTIONS  
**David W Betts**  
Dr Jacques Bourgeois  
Kenneth W Delf  
George Fowlie  
Douglas A Gameraff  
**James N MacNeil**  
John N Moore  
Glenn R Rourke  
Donald F Sturgess  
Gerald R Woodburn

### MBA 1970

**40th Reunion  
Social Committee:  
Don Anderson, Jim Skelton**  
**Fundraising Committee:  
Jacques Menard  
Rob Richards**  
**Total: \$86,954**  
**Participation: 20%**  
IVEY SOCIETY,  
FOUNDERS' CIRCLE  
John A Le Boutillier  
**Douglas E Speers**

IVEY SOCIETY,  
DEANS' CIRCLE  
**Gilles G G Ouellette**  
**Donald Woodley**  
IVEY SOCIETY, PATRON  
W J Michael Mogan  
IVEY SOCIETY, BENEFACTOR  
**Stephen R Brown**  
**Bill Cameron**  
L Jacques Menard, OC  
L Russell Payson  
**Rob Richards**  
W James Skelton  
OTHER ANNUAL  
FUND CONTRIBUTIONS  
**Donald A Anderson**  
Michael J Butler  
Joseph W Courtright  
David Dolman  
David Edwards  
Gerald Fallon  
David A Ganong  
**Gerald Goldenberg**  
John Harbinson  
**Gilbert R Mackie**  
William C McCallum  
**Lyall R McCurdy**  
G Christopher Phillips  
**George Ratner**  
Peter Rhodes  
Edward K Truman

#### **MBA 1971**

**Total: \$47,633**  
**Participation: 17%**

IVEY SOCIETY,  
FOUNDERS' CIRCLE  
Ron Charles  
Libby & Charles Winograd  
IVEY SOCIETY,  
DEANS' CIRCLE  
**Mark Cullen**  
IVEY SOCIETY, BENEFACTOR  
Bruce C Burgess  
**Phillip Gooch**  
**Bruce Graham**  
Winston Ho Fatt  
Ian A Mackay  
**Ronald E Taylor**  
OTHER ANNUAL  
FUND CONTRIBUTIONS  
Ian D M Brooker  
Thomas R Cochran  
Wayne G Cook  
Frank Fabian  
**G Michael Hogan**  
**Carol & John Kittredge**  
**Karl H Lubbe**  
Anne & Jay MacAulay  
Doug McDougall

Peter Oakes  
**Stephen C Plumley**  
Thomas H Ramsay  
Edward Shinewald  
Neil G Sinclair  
Enn Tiislar  
**Stephenson Wheatley**

#### **MBA 1972**

**Total: \$40,259**  
**Participation: 14%**

IVEY SOCIETY,  
FOUNDERS' CIRCLE  
John Adamson  
**Henry Cheng**  
Sanjib Choudhuri  
**Arkadi Kuhlmann**  
**Pierre L Morrissette**  
IVEY SOCIETY,  
DEANS' CIRCLE  
**Chris R Matthews**  
IVEY SOCIETY, PATRON  
**Wesley R Twiss**  
IVEY SOCIETY, BENEFACTOR  
Gary Davis  
William D Fletcher  
Richard K M Frank  
**Tom & Verna Howard**  
OTHER ANNUAL  
FUND CONTRIBUTIONS  
Anonymous  
Anonymous  
G Ross Burkett  
Brendan G Gnall  
Gary Gorman  
**G Neville Grant**  
Hans J Hossfeld  
Stephen Klemchuck  
**Jacques Laparé**  
David Minuk  
Michael Pasztor  
Wayne J White  
Jessie & Larry Wynant

#### **MBA 1973**

**Total: \$35,885**  
**Participation: 11%**

IVEY SOCIETY,  
FOUNDERS' CIRCLE  
Michael M Kanovsky  
Louis Lagassé  
IVEY SOCIETY,  
DEANS' CIRCLE  
**Lawrie Savage**  
IVEY SOCIETY, PATRON  
Anonymous  
IVEY SOCIETY, BENEFACTOR  
Anonymous

Marc A L Decarie  
**Marshall R Egelnick**  
**Terry A Jackson**  
Bob Schram  
OTHER ANNUAL  
FUND CONTRIBUTIONS  
Richard H Bayly  
W A David Brittain  
Ronald S Goldsmith  
Patrick O'Neil  
Michel P Pellerin  
Graham D Senst &  
Dr Sarma Lauge  
**Ian J Taylor**  
Rigby Whitty

#### **MBA 1974**

**Total: \$36,400**  
**Participation: 14%**

IVEY SOCIETY,  
FOUNDERS' CIRCLE  
**E Nicholas Gudewill**  
IVEY SOCIETY, PATRON  
Alan Small  
**Bob Stuebing**  
IVEY SOCIETY, BENEFACTOR  
**Hans C Jonckheere**  
**Kay & David McNamara**  
Patrick O'Callaghan &  
Associates  
OTHER ANNUAL  
FUND CONTRIBUTIONS  
Anonymous  
John D Alton  
**Andrew Bland**  
Michel J A Charbonneau  
**James Coristine**  
C Kenneth Crump  
Luc Fagnan  
J Duncan Gibson  
Thomas S Gifford  
**Stewart D Gossen**  
Wolfgang Hagenhofer  
Robert S Hart  
**George W MacDonald**  
**Denyse M Mackey**  
Jack D Simkin  
Paul J Tardif  
Robert G von der Porten  
Louis Zanibbi  
**Robert H Zittner**

#### **MBA 1975**

**35th Reunion**  
**Social Committee:**  
**Bill Albino, Tony Horak,**  
**Freda Kemp, Mike McInerney,**  
**James Milway, Mark Sklar,**  
**Tony Whitaker**

#### **Fundraising Committee:** **Tony Horak**

**Total: \$23,050**  
**Participation: 14%**

IVEY SOCIETY,  
FOUNDERS' CIRCLE  
**Bill & Kathleen Troost**  
IVEY SOCIETY,  
DEANS' CIRCLE  
Roger Lace  
IVEY SOCIETY, PATRON  
**Tony J Horak**  
IVEY SOCIETY, BENEFACTOR  
Robin Dow  
Robert J A Fraser  
John J Gradek  
C James Prieur  
John & Lena Putnam

#### **Keith Smith**

OTHER ANNUAL  
FUND CONTRIBUTIONS

#### **Jim Bonny**

Stuart Campbell  
Frank Chamandy  
**Wing S Chau**  
**Robert E Dearborn**  
Robert R Dunstan  
Aundy A Gopalakrishnan  
Scott Hean

#### **Gord James**

Michael R Levine  
J Thomas Lockhart  
**James B Milway**  
Alan D Morrison  
Eleanor R Pattillo  
Brian Phillips  
John P T Pysklywec

#### **MBA 1976**

**Total: \$39,993**  
**Participation: 16%**

IVEY SOCIETY,  
FOUNDERS' CIRCLE  
**Heather & Jim Hunter**  
Franklin G Jacobs  
IVEY SOCIETY, BENEFACTOR  
**Michael Boyd & Shelagh Donovan**  
**John F Coombs**  
James A Gellman  
Terrance W O'Grady  
OTHER ANNUAL  
FUND CONTRIBUTIONS  
Nico L C Choi  
Michael E Dunphy  
Gary J Ghent  
Arnold H Hochman  
Stephen B Holtzkener  
Louise C Hurtubise

Steven A Kelly  
Douglas H Kuwahara  
**Richard W Lancaster**  
**Lesley Lemesurier Alboini**  
**Christine C Lengvari**  
Gerald Mazin  
Paul D McKnight  
**Gerald A McLeod**  
**William H McNeil**  
Kenneth Moody  
George C Reifel  
Dennis G Romanson  
Lawrence M Rumble  
**Paul Stevenson**  
**Penny Thomas**  
Howard I Yaphe

#### **MBA 1977**

**Total: \$64,785**  
**Participation: 17%**

IVEY SOCIETY,  
FOUNDERS' CIRCLE  
Jean-Louis Fontaine  
**Robert J Gorman**  
W Warren Holmes  
**Bruce M Shirreff**  
IVEY SOCIETY, PATRON  
Ian D Bruce  
IVEY SOCIETY, BENEFACTOR  
**Linda Chan**  
Gregory Galardo  
**H Barry Gales**

#### **MBA 1979**

**Total: \$32,780**  
**Participation: 11%**

IVEY SOCIETY,  
FOUNDERS' CIRCLE  
**David Kassie & Susan Harris**  
IVEY SOCIETY,  
DEANS' CIRCLE  
Anonymous  
IVEY SOCIETY, PATRON  
Anonymous  
Thomas K Barber  
Jim Gallagher  
Gregory Guichon  
IVEY SOCIETY, BENEFACTOR  
**Cameron J Turner**  
Eric Vengroff  
OTHER ANNUAL  
FUND CONTRIBUTIONS  
Michael P Blaesing  
Robert G Cook  
Mark D Dickman  
Cornelius H Janzen  
Hans O Klohn  
**Ron Lalonde**

# CLASS GIVING

# MBA (continued)

In recognition of their loyal support, donors who have supported the School for five or more consecutive years are listed in bold.

**IVEY SOCIETY LEADERSHIP LEVELS**  
 Founders' Circle: \$10,000+ Deans' Circle: \$5,000-9,999 Patron: \$2,500-4,999  
 Benefactor: \$1,000-2,499 The First Decade Society: \$100-\$999

David O Merriman  
 Robert E Mitchell  
 Leslie & Guy Nelson  
 Kevin M O'Keefe  
 Stephen R Wilkinson  
 W Todd Wilson

## MBA 1980

**30th Reunion  
 Social & Fundraising Committee:**  
**David Cornhill, Gord Floe,  
 Gerry Higgins, Maxine MacLure,  
 Nancy McInerney-LaCombe,  
 Kevin O'Leary, Paul Sabourin,  
 Andrew Scott, Andrew Wiswell**

**Total: \$202,993  
 Participation: 18%**  
 IVEY SOCIETY,  
 FOUNDERS' CIRCLE

**David W Cornhill  
 Linda & Kevin O'Leary  
 Paul Sabourin  
 Andrew B Wiswell**  
 IVEY SOCIETY, PATRON  
 Peter M Conrod, CMA  
 IVEY SOCIETY, BENEFACTOR  
 Kathryn Stanley & Ron Farmer

**Randy Fretz  
 Maxine MacLure**  
 Nancy McInerney-Lacombe

**Dan Nixon  
 Craig Shannon**  
 Jill & Kevin Yousie  
 OTHER ANNUAL  
 FUND CONTRIBUTIONS  
 Anonymous

Anonymous  
 Gary A Babcock

**Bill Blake**  
 R Gordon Currie  
 Bob Dido

**William D Egan**  
 Paul A Farkas  
 Christopher J F Graham

**Richard Henson**  
 David R Kearney  
 Aimo Kuronen

**Marc Lapointe**  
 Eric Lefebvre

**Jacques Lepage**  
 Gary W Lindsay  
**Tina & Craig MacKinlay**  
 Sean P McGrath

Scott Moulson  
 Jack R Nolan  
 Gordon O'Neil  
 Michael L Rice

**Halina Sandig**  
 Mark Singh  
**Maide Yazar**

## MBA 1981

**Total: \$55,125  
 Participation: 20%**  
 IVEY SOCIETY,  
 FOUNDERS' CIRCLE  
**Richard E Rooney**  
 IVEY SOCIETY,  
 DEANS' CIRCLE  
**Doug Irwin & Margot Jones  
 Tom & Betty-Anne Lindsay**  
 IVEY SOCIETY, BENEFACTOR  
 Gerald I Asa  
 Malcolm W Hamilton

**Lyle Kerr & Valerie Millen**  
 Michael & Janet Norris

**Karen L Spaulding  
 Alexander M Tye**

**Michael Weber**  
 OTHER ANNUAL  
 FUND CONTRIBUTIONS  
 Anonymous

Jann Ashley  
 Paulo R Bergamasco

**Martin Braun**  
 Joanne & David Browne  
 Richard W Burgoyne

Suzanne & Doug Carty  
 Robert S Deane

Rick Dembicki  
 Alasdair (Buzz) Grant

Gary Grundman  
 J Allen Hill

Stephen N Kushner  
 Michael L Langstaff

Gerald K Lister  
 David G Luke

Alex D MacPherson  
 Gregory O Marlatt

Clifford B McCracken  
 Glen F Murphy

Keith Pendersen  
 Ronald A Pertmutter

Douglas N Ruby  
 Douglas Short

Robert D Snowdon  
**Peter Spruce**

BK Sulzer Consulting Inc  
 David Tanner

Debi & Doug Wonnacott  
 David S Wood

## MBA 1982

**Total: \$61,780  
 Participation: 15%**  
 IVEY SOCIETY,  
 FOUNDERS' CIRCLE  
**Susan Harris & David Kassie  
 Ian Ihnatowycz & Marta Witer**

## Doug McGregor

**Larry J Rosen**  
 IVEY SOCIETY,  
 DEANS' CIRCLE  
**Margot Jones & Doug Irwin**  
**Dipak Rastogi**  
 IVEY SOCIETY, BENEFACTOR  
 Anonymous  
 Deborah D'Arcy  
**Michael De Santis  
 David J Dulal-Whiteway**  
 Mike Moroz

**Wendy Murdock**  
 OTHER ANNUAL  
 FUND CONTRIBUTIONS  
 Anonymous

Anonymous  
 Anonymous  
 Graham & Susan Davies

David R Grant  
 Stephen Hecht

**J David Hilborn**  
 Nasrullah F Jinnah  
 Aly Lalani

Maureen Long  
 Cairine MacDonald

Barbara J Mathies  
**Jacqueline Orange**

Andrew Parkes & Bill Parkes  
**Beth Roemmele Hemstad**

**Anton P Schlemm**  
**Amos Simpson**

John Stanczyk

## MBA 1983

**Total: \$150,053  
 Participation: 22%**  
 IVEY SOCIETY,  
 FOUNDERS' CIRCLE  
**Ronald Bresler**  
**Geoffrey Gudewill**  
**Pierre Lapointe**  
 Jonathan A Lexier  
**Jack H Matthews**  
**Steve McDonald**  
**Kishore K Sakhrani**  
 IVEY SOCIETY,  
 DEANS' CIRCLE  
 Shane P O'Leary  
 IVEY SOCIETY, PATRON  
 James A Bertrand  
 IVEY SOCIETY, BENEFACTOR

**Susan Abbott**  
**Deb & Jeff Bacon**

Paul Ballinger  
 Michael Binette

**Bradley C Bourne**  
**Charles W Brown**

**Perry Caicco**  
**Janet & Roger Dickhout**  
**Douglas J Harman**  
**Douglas Richmond**  
 OTHER ANNUAL  
 FUND CONTRIBUTIONS  
 Anonymous  
**John R Beamish**  
**Ronald J Benes**  
 Dr Les Bowd  
 Peter Brennan  
 Christopher Chance

**Laurie A Dunk  
 Jeannette A Eberhard**  
 Steven Yaron Garmaise  
 Russell Graham

**Tim Henry**  
 Roland Horst

**Tom Jesty**  
 Matt Lawton

**Thealzel Lee**  
**Patricia S T Ling &  
 Chun P Ling**

**Pauline F Malley**  
 John F Mathewson

Ian E McNeil  
 Lennox A Parkins

Pierre Rivard  
 Gary Svoboda  
 Jay Switzer

## MBA 1984

**Total: \$41,434  
 Participation: 18%**  
 IVEY SOCIETY,  
 FOUNDERS' CIRCLE

Lenny Moy  
 IVEY SOCIETY,  
 DEANS' CIRCLE

**Kirsten Feldman**  
 Harolde Savoy  
 IVEY SOCIETY, PATRON

**Jan & Mark Herman**  
 IVEY SOCIETY, BENEFACTOR  
 William W Burnfield

David J Carroll  
 Douglas MacKay

Sai-Chak Mak  
 Rick Mazur

Dr Rebecca Grant &  
 Dr David McCutcheon

Tides Canada Foundation  
 Chauvel Fund

OTHER ANNUAL  
 FUND CONTRIBUTIONS  
 Anonymous

**Duncan E Campbell**  
 J Wilbur Charles  
 Bruce Dumville

Judith Hill-Heinrichs  
 & Robert Heinrichs  
 Paul Hooper  
 Dr Andrew Inkpen  
 Diana Jedig  
**J Anne Lamont**  
**Meegan Hinds &  
 Marc Letourneau**  
 John D M MacDougall  
 Ken MacKinnon  
 Reid C MacWilliam

**Hylde & Tony Martin**  
**Paul C McCabe**  
 Edward J McHugh  
 Howard S Nisenbaum

**Rosemary (Schauf) Pahl**  
 Lynda Parks Sahadat

Stephen F Quinn  
 Gita Ramachandran  
 Robert P Stanners

**Sandra Rosch**  
 Liz A Ross  
 Blair A J Shier

Robert Stanners  
**Scott Tapson**

Henry Vehovec &  
 Ann Louise Vehovec  
 Ellen Briant &  
 Christopher Vyse

**Peter J Waugh**  
 Robert Yanowski

**Andrew C Zsolt**

## MBA 1985

**25th Reunion  
 Social Committee:**  
**Andrew Annett, David Aston,  
 Carl Haim, Sandy Halloran,  
 Paula Leslie, Donna Porter,  
 Tim Rudkins, Julia Scott,  
 Bill Stewart, David Weiner**

**Fundraising Committee:**  
**Kevin Clark, Gene Genin,  
 Brian Heald, Stephen Lister**

**Total: \$493,897  
 Participation: 18%**  
 IVEY SOCIETY,  
 FOUNDERS' CIRCLE

Donald F Archibald  
 Andy Chisholm

Debra & Brian Heald  
 Stephen D Lister

**Robert G McFarlane**  
 IVEY SOCIETY,  
 DEANS' CIRCLE

Jane & Maurice Hudon  
 IVEY SOCIETY, PATRON

James R Charlton  
 IVEY SOCIETY, BENEFACTOR

Susanne & Doug Berk

Kevin C Clark  
 Ken Hollingshead  
 Donald J Polk  
 David R Weiner  
 OTHER ANNUAL  
 FUND CONTRIBUTIONS  
 David Aston  
 Guy Charette  
 Peter Cook  
 Lloyd Cooper

**Claude F Damiani**  
**Joan E Fiset**  
**C Anne Hale**

Muneer Hirji  
 Mark G Klar  
 Gordon & Beverly Knapp

Eric C L Lee  
 Harold Manifold  
 Donald T Maunders

Kerry McLellan  
**Michael G Reed**

Andrew H Ringvee  
 Neil Schatz

Bob Shustack  
 Robert T Solomon

Peter Sutherland  
**Thomas J Trainor**

Ron B Wild  
 Marita E Zaffiro

## MBA 1986

**Total: \$152,067  
 Participation: 18%**  
 IVEY SOCIETY,  
 FOUNDERS' CIRCLE

Wendy Adams &  
 Wade Oosterman

**E Scott Beattie**  
**The Shlesinger Family**

IVEY SOCIETY,  
 DEANS' CIRCLE  
 Anonymous

IVEY SOCIETY, PATRON  
**Paul W Szczucinski**

IVEY SOCIETY, BENEFACTOR  
**Thomas J Clulow**

Yvon Gaudreau  
**Barbara L Lawson**

David S M McCann  
 Jacques Nolin

Adrian A Visentin  
 OTHER ANNUAL  
 FUND CONTRIBUTIONS

Anonymous  
**Andrew Aleong**

Jim Arsenych  
**David Boyce**

Steve Cruickshank

Peter Eaton  
Ann Elliott  
Donald Ellsworth  
Alain J G Gauthier  
John Harris  
**Thomas G Hinton**  
Susan F Lalonde  
**Bruce Lindsay**  
Robert A Mack  
**Jim McKay**  
Richard Morden  
Glen Norton  
Allister C Paterson  
Andrew J Ross  
**David J Smith**  
Donald Smrke  
**Paul W Szczucinski**  
Brian L Thompson  
B Andrus Wilson

#### **MBA 1987**

**Total: \$84,698**  
**Participation: 19%**  
IVEY SOCIETY,  
FOUNDERS' CIRCLE  
John Akkerman  
Alexandra & Camillo Di Prata  
Robert W Gibson  
Horst E Hueniken  
Joseph Tse  
IVEY SOCIETY,  
DEANS' CIRCLE  
**Daniel R Coholan**  
William J Furlong  
IVEY SOCIETY, BENEFACTOR  
Anonymous  
Grant S Berry  
Michael Kline  
**Martin H Loken**  
**Lyle Kerr & Valerie Millen**  
Dan O'Byrne  
Filip Papich  
Gordon Pearce  
Carmen M Piche  
Ann E Watson  
OTHER ANNUAL  
FUND CONTRIBUTIONS  
Anonymous  
Anonymous  
Paul Badeski  
Mark Caldwell  
Christopher J Dawson  
Gerry T Fenwick  
Michael Heale  
Warren G Holmes  
John Hughes &  
Jacinta Podson-Hughes  
Stephen Kaufman

Michael L Kline  
Marcel Leclair  
**Peter J Macaulay**  
Dale R MacMaster  
Dr Brent Matthew  
Scott Northey  
Dr D Sandfield Staples  
Aldo Sylvestre  
**Chi Tong**  
**Jill Vandal**  
Harry J Verlaan

#### **MBA 1988**

**Total: \$50,410**  
**Participation: 19%**  
IVEY SOCIETY,  
FOUNDERS' CIRCLE  
Janet C Griffin &  
Jock W MacDonald  
**Timothy Hodgson &  
Linda Netten**  
Tim MacDonald  
IVEY SOCIETY, PATRON  
**David Montanera**  
Robert Olsen  
IVEY SOCIETY, BENEFACTOR  
Anonymous  
Graham Carter  
Stephen S Hughes  
Pamela Jeffery  
**Don MacDougall**  
**Charles A MacQuarrie**  
James R McGill  
OTHER ANNUAL  
FUND CONTRIBUTIONS  
Anonymous  
Robert A Blair  
**Michael A Bolitho**  
Cathy M Buchanan  
**Kevin H Campbell**  
Catherine R Cepin  
**Bob M Chown**  
**Christopher J Connolly**  
Laura A Dierker  
Martin Fafard & Angela Olsen  
Paul W Fisher  
Robert Guignard  
Brand R Inlow  
Walter Kowal  
Jonathan Latsky  
**Diane Moldaver**  
**Robert J Mustard**  
Paul R Orser  
Christianne Paris  
George Power  
Mary Robertson  
Laura Rosenthal  
Helene L Soucy

John Swettenham  
**Peter Szoke**  
Atul Thakrar  
Gregory B Turchyn  
Gregory P Vitali  
Nancy A White

#### **MBA 1989**

**Class Agent: Laurie Campbell**  
**Total: \$42,571**  
**Participation: 18%**  
IVEY SOCIETY,  
FOUNDERS' CIRCLE  
**Laurie Campbell**  
Pierre Pomerleau  
IVEY SOCIETY, PATRON  
**Steve Dent & Janet Maclaren**  
Geoffrey S C Cann  
**Bill Quinn**  
IVEY SOCIETY, BENEFACTOR  
Anonymous  
Denise C MacDonald  
Wendy MacKinnon-Keith  
**Bruce & Lisa Rothney**  
OTHER ANNUAL  
FUND CONTRIBUTIONS  
**Dr Neil A R Abramson**  
**Marc A Bisson**  
**Robert Blais**  
Ted A Bonertz  
David R Cochrane  
David S C Dobell  
**Richard H Dobson**  
Susan Doughty (Little)  
Katherine Dumanski  
Sheila Duncan  
Christopher R Edmonds  
Ted Gajewski  
Robert S Gardner  
Anastasios Georgiou  
James Gilliland  
**Nicole C Goodfellow**  
**Alex E Graham**  
Michael J Greenberg  
Rick Heyland  
Theresa M Kane  
**Robert LaJoie**  
Robert E Lumley  
Denise C MacDonald  
**Ian Macdonell**  
Jeffrey G Miller  
Laura M Mizzen  
Elizabeth A Pollock  
Kurt Ritcey  
Douglas R Shinobu  
**Douglas Stirling**  
John Welton  
Jane E Zoeger

#### **MBA 1990**

**20th Reunion**  
**Social Committee:**  
**Penny Fabbro, Lois Nahirney**  
**Fundraising Committee:**  
**Rizwan Ahmad, Susan**  
**Austin, Paul Campbell,**  
**Patrick Meneley,**  
**Jim Rogers, Vicky Stikeman,**  
**Grant Williams**  
**Total: \$202,202**  
**Participation: 17%**  
IVEY SOCIETY,  
FOUNDERS' CIRCLE  
**Michelle & Patrick Meneley**  
IVEY SOCIETY,  
DEANS' CIRCLE  
Anonymous  
Mark & Karen Belanger  
**Paul F Campbell**  
**William J Jandrisits**  
IVEY SOCIETY,  
BENEFACTOR  
Anonymous  
Rizwan Ahmad  
Bruce Graham  
Donald Johnson  
Debra Merchant  
Paul B Noreau  
Lisanne & Jim Rogers  
Victoria Stikeman  
Suzanne & Kristian Teleki  
OTHER ANNUAL  
FUND CONTRIBUTIONS  
Anonymous  
Anonymous  
Anonymous  
Vicky Batters  
**Keith Dawson**  
Penny E Fabbro  
Lynn C Gregor  
**Bernard Gutnick**  
Robert Hallsworth  
James Hatley  
Todd Hoskins  
**Timothy D Keighley**  
Timothy W MacLeod  
R Greg McKnight  
**John McMillan**  
Janet Powell  
Susan Sarjeant Austin  
Bruce A Schouten  
**Donna E Thompson**  
Jim Tower  
Theresa & Grant Williams

#### **MBA 1991**

**Total: \$29,775**  
**Participation: 15%**  
IVEY SOCIETY,  
FOUNDERS' CIRCLE

**Mark Whitmore**  
IVEY SOCIETY, BENEFACTOR  
Rod Foss  
Stephen Legler  
**Mark E Newman**  
Francis Joseph Sirdevan  
**Mike Thorfinnson**  
**Sandy Whittall**  
OTHER ANNUAL  
FUND CONTRIBUTIONS  
Anonymous  
Steve Adams  
Juliet Atha  
Peter M Ballon  
David Cassie  
**Ross H Chafe**  
**Glen Charanduk**  
**Linda A Crawford**  
**Rhonda L English**  
Grant Fraser  
Susan & Dieter Gamm  
James Goodchild  
Philip Hasegawa  
Christian J Huber  
Donald Konantz  
Ann E Lumsden  
**Lorna MacDougall Denham**  
Brad Maheu  
Howard Mains  
Dev Manohar-Maharaj  
Kevin H McAdams  
Douglas Melville  
Lisa A Portier  
Robert I Presser  
Douglas R Purcell  
Ronald P Reinders  
Richard Jamie Sawchuk  
Jack E Scott  
**Amos Tin**  
Jeff Weiss  
Lynn Young

#### **MBA 1992**

**Total: \$47,686**  
**Participation: 14%**  
IVEY SOCIETY,  
FOUNDERS' CIRCLE  
Paul E Moynihan  
IVEY SOCIETY,  
DEANS' CIRCLE  
**Margot E Thom**  
IVEY SOCIETY, BENEFACTOR  
**Alicia & Tony Cestra**  
James A D'Orazio  
**Stephen J A Fagan &  
Deborah A Chow-Fagan**  
Julie E Hamel  
Bill Jack

**Dr P Fraser Johnson**  
Judy & Steve Meston  
Jacqueline & Joseph Nemeth  
Boris Novansky  
**John T Samuel**  
OTHER ANNUAL  
FUND CONTRIBUTIONS  
Douglas A Barry  
Jeffrey C Bell  
Gordon Cameron  
Eddie Castelletto  
Jason B Chreйн  
Ian Glassford  
Chris Hibberd  
Scott Hilborn  
**Michael F Hill**  
Derek Layne  
**Patricia M Meehan**  
Hugh Owen  
Sylvain Pelletier  
Cathy L Pin  
Deanna L Schuerbeke  
George Staikos  
Bernard Trotter  
Tony Valle  
Trevor Wilcox

#### **MBA 1993**

**Class Agent:**  
**Sarah Morgenstern**  
**Total: \$44,816**  
**Participation: 13%**  
IVEY SOCIETY,  
FOUNDERS' CIRCLE  
Anonymous  
Edward J Gudaitis  
IVEY SOCIETY,  
DEANS' CIRCLE  
**Sarah Morgenstern &  
Todd Hargarten**  
IVEY SOCIETY, PATRON  
Anonymous  
Wouter D'Ailly  
IVEY SOCIETY, BENEFACTOR  
Brian D'Costa  
**David Dundas**  
David Ghesquiere  
Lani C Martin  
**Pierre P Pacarar**  
**Robert T Pemberton**  
**John A Sinclair**  
OTHER ANNUAL  
FUND CONTRIBUTIONS  
Anonymous  
David L Ager  
**Paul Blaha &  
Laurel Deplaedt**  
**Michel Bruyere**  
Stephane Chartrand

# CLASS GIVING

# MBA (continued)

In recognition of their loyal support, donors who have supported the School for five or more consecutive years are listed in bold.

**IVEY SOCIETY LEADERSHIP LEVELS**  
 Founders' Circle: \$10,000+ Deans' Circle: \$5,000-9,999 Patron: \$2,500-4,999  
 Benefactor: \$1,000-2,499 The First Decade Society: \$100-\$999

## Dan & Karen Condon

Nick Evans  
**Andrew W Herrmann**  
**Martha L Ivester**  
**Kathy Kalafatides**  
 Colleen A Keane  
**Mark E Klajman**  
 Wayne A Kozun  
 Brian May  
**Martin McCambridge**  
**Jeff Meyer**  
 John E Millar  
 Walter Romaniuk  
 John Sawler  
 Robert Symmons  
**Dennis Tze**  
 Gregory Wong

## MBA 1994

**Class Agent: Sergei Tchetvertnykh**  
**Total: \$22,242**  
**Participation: 10%**  
 IVEY SOCIETY, FOUNDERS' CIRCLE  
**Olga & Sergei Tchetvertnykh**  
 IVEY SOCIETY, BENEFACTOR  
 Anonymous  
**Andrew J Abbott**  
**Mark Barber**  
 William Pang  
**Chet C Woon**  
 OTHER ANNUAL FUND CONTRIBUTIONS  
 Marilyn M Ablett  
 Peter C Burkhart  
**Margot Burleton**  
 David & Nancy Chapman  
**Clare W Cheng**  
 Lindsay Dodd  
**Deepak Khandelwal**  
 John Koyanagi  
 Priscilla Ma  
**Anthony L Mar**  
 Eric Martin  
**Robert A McDougall**  
**Andrew L Nelson**  
**T John Rideout**  
 David Roberts  
 Juliane M Schaible  
 Martha & Dirk Schrader  
**Peter Strickland**  
**Steve Suarez**  
**Bryan C Tatoff**  
 William A Washington  
 Ben A Yu

## MBA 1995

**15th Reunion Social Committee:**  
**Mark Brown, Alexa Nick, Nick Patsiopoulos, Greg Thompson**  
**Total: \$19,450**  
**Participation: 8%**  
 IVEY SOCIETY, FOUNDERS' CIRCLE  
 The Hopper Family  
 IVEY SOCIETY, DEANS' CIRCLE  
 Greg & Tracy Guatto  
 IVEY SOCIETY, BENEFACTOR  
 Alexandra B Nick  
**Bradley A Radin**  
 OTHER ANNUAL FUND CONTRIBUTIONS  
 Judith C Baker  
 Christopher Barnard  
 Esther Benzie & Mark Phillips  
 Karen Grant  
**Dean Herback**  
 Todd Hutchings  
 Jay P Larock  
 Hilda H Lau  
 Edward R T Lawson  
 Gary Nevison  
**Athena Pasqualoni**  
 Joseph M Seidel  
 Linda A Verth  
 Howard Wiseman

## MBA 1996

**Class Agents: Jonathan Black, James Vogtle**  
**Total: \$113,170**  
**Participation: 10%**  
 IVEY SOCIETY, FOUNDERS' CIRCLE  
 Mark Wellings  
 IVEY SOCIETY, PATRON  
**Michael Bernstein & Nan Dasgupta**  
 IVEY SOCIETY, BENEFACTOR  
 Dominique Hansen  
**Stephen H E Murphy**  
 John Sterling  
 OTHER ANNUAL FUND CONTRIBUTIONS  
 Anonymous  
 Anonymous  
 Mark C Beck  
 Patricia Caplan  
 Mary E Desbrisay  
 Stephen Elliott  
 Mary & Nick Fry  
 Stephanie C Galloway  
 Tracey Groom  
 Lynda M Guile

Scott Hledin  
 Mark Kopytek  
 Marie-Josée Martineau  
**Greg McLean**  
 Matthew F McQuillen  
 Robin Porter  
 Ann-Margaret Tait  
 Robert J Ward

## MBA 1997

**Class Agent: Steve Dumanski**  
**Total: \$31,917**  
**Participation: 12%**  
 IVEY SOCIETY, FOUNDERS' CIRCLE  
 Philip F D Moorcroft  
 IVEY SOCIETY, DEANS' CIRCLE  
 Hugh D Babowal  
 IVEY SOCIETY, PATRON  
**Victoria & Anthony Ostler**  
 Curt Sigfstead & Lara Witter  
 IVEY SOCIETY, BENEFACTOR  
**Steve Dumanski & Lesa Chow**  
 George Nast  
 Tak Yu Trevor Tam  
**Toni & Chris Taves**  
 OTHER ANNUAL FUND CONTRIBUTIONS  
 Anonymous  
 Anonymous  
 Anonymous  
**Anthony Anderson**  
**Mark D Applebaum**  
 Roger Berthelot  
 Kerry D Biggs  
 James A Black  
 Hui Cai  
**Geoffrey G Colter**  
 Roman A Duch  
 Sally M Fereday  
**Yoshihisa Hashimoto**  
 Thomas B Hugh  
 Scott McRorie  
**Ian S Orfanides**  
 Karen M Peesker (Boehnke)  
 Thomas G Philpott  
 Mike Smerdon  
**Jason Steinberg**  
 Eric E Strong  
 Michael & Angela Switt

## MBA 1998

**Class Agent: Jerry White**  
**Total: \$15,715**  
**Participation: 13%**  
 IVEY SOCIETY, PATRON  
 Lara Witter & Curt Sigfstead

## IVEY SOCIETY, BENEFACTOR

Stephen Bertrand  
 Emma Loewen & Brett Undershute  
**Erin & Jan Sorhaug**  
 OTHER ANNUAL FUND CONTRIBUTIONS  
 Anonymous  
 Simon Adell  
 Tim Benson & Suzanne Spragge  
**Sean Cameron**  
 Mike Collins  
**Marie-Anne Desjardins**  
 Sergei Dombrowski  
**Brett V Flint**  
 Charles A Gadalla  
 Bradley P Havixbeck  
 Carolyn E Hobbs  
 Orchid Jahanshahi  
**Allison Kim**  
**Antoni A Krajewski**  
 Rosemary R Lavoie  
 Elizabeth Lazarou  
**Tim D Logie**  
 Eric Matusiak  
 Chantal Miklosi  
 Robert C Nemett  
 Kevin Oerton  
 Carlos A Ortega  
 William D Robertson  
**Andrew Romocki**  
 David E Roode  
 John Shannon  
**Tal Vilenski**  
**Helen Wang**  
**Glen Webster**  
**Jerrold White**

## MBA 1999

**Class Agents: Tim Grigg, Darren Rough**  
**Total: \$15,661**  
**Participation: 7%**  
 IVEY SOCIETY, BENEFACTOR  
 Anonymous  
 Jeff White & Joanne Dolfato  
**Michael Flood**  
 Jamie G Gallant  
 Mark Lerohl  
 Darren Rough  
 Brett Undershute & Emma Loewen  
**Shon Wilkie**  
 OTHER ANNUAL FUND CONTRIBUTIONS  
 Anonymous  
 Munawwar Ali

William Anderson  
 Jannalee I Anderson  
 Cristina M Austin  
 Nicolas Bilodeau  
 Doug Duimering  
 David Eason  
**Andrew Fletcher & Family**  
 Carolyn A Freeborough  
 Mike MacMillan  
 Ian Purdell-Lewis  
 Mike Rumsey  
**Gordon V Sandford**  
 Jeem Sirivar  
**Andre Sochaniwsky**  
 Robert Weiss

## MBA 2000

**10th Reunion Social & Fundraising Committee:**  
**Shakeel Bharmal, Allan Buitendag, Russell Goldstein, Catherine Jarman, Patrick Mitchell, Mark Muratori**  
**Total: \$12,567**  
**Participation: 16%**  
 IVEY SOCIETY, BENEFACTOR  
 Francis Man Kit Pun  
 OTHER ANNUAL FUND CONTRIBUTIONS  
 Anonymous  
 Anonymous  
 Anonymous  
 Anonymous  
 Dominic James Atkinson  
**Shakeel Bharmal**  
 Artem Borounkov  
 Kevin C L Brimble  
 Benoit Cantin  
 Gordon Frost  
**Jeffrey Groves**  
 Richard Huang  
 Catherine Jarman  
 Trevor Lam  
**Tara Landes**  
 Yingqian Li  
 Daniela R Liscio  
 Jason George MacDonnell  
 David Markanich  
 Jonathan Minsky  
**Patrick R Mitchell**  
 Marc A Muratori  
 Joanna Ng  
 Craig Nicol  
 Simon Parmar  
 Christine Leanne Rigby  
 Victor W J Rudik  
 Krista Saleh  
 Ragavan Senthivel  
 James Shannon  
**Brian J Sinclair**

## Athena A Skagos

**Scott S Spencer**  
 Michael Tan  
**Geoffrey P Wright**  
 Victoria L Young

## MBA 2001

**Class Agent: Anna Rea**  
**Total: \$13,702**  
**Participation: 6%**  
 IVEY SOCIETY, DEANS' CIRCLE  
 Anne McMaster & Frederic Lesage  
 IVEY SOCIETY, BENEFACTOR  
 Abzal Ayubeally  
 Colin Edwards  
 Kevin S Williams  
 IVEY SOCIETY, THE FIRST DECADE SOCIETY

## Melissa Holland

OTHER ANNUAL FUND CONTRIBUTIONS  
 Anonymous  
 Anonymous  
 Anonymous  
 Sandra H Bolton  
 Peter Busse  
 Dan Eisner  
**Xinyi Gu**  
 Chun-Lei Hao  
 Ellen R Jarman  
**Marc Kaipio**  
**Peter Kalen**  
 Lachlan MacQuarrie  
**Peter Neufeld**  
 Paula J Puddy  
**Don Qiu**  
 Paul W Randlesome  
 James Sikora  
**Janine White**  
 Jeffrey Wu  
 Andrea L Young  
 Guoliang Zhang

## MBA 2002

**Class Agent: Robyn Hochglaube**  
**Total: \$14,763**  
**Participation: 6%**  
 IVEY SOCIETY, DEANS' CIRCLE  
**Staffen Family**  
 IVEY SOCIETY, BENEFACTOR  
 J Mark Cameron  
 Dil Grewal  
**James Kao**  
 Alan Marr



IVEY SOCIETY, THE  
FIRST DECADE SOCIETY

**Michael Quinn**  
OTHER ANNUAL  
FUND CONTRIBUTIONS

Anonymous  
Nirma Alborz  
**Jean-Pierre Boudrias**

Sean Brady  
Paul Fitzpatrick  
John Foufas  
Gerard Gagnier  
Mustafa Husain  
Deland M Jessop  
Catherine Jian  
Wendy S Lee  
John Liu

Jason R Livingstone  
Stéphane Ouellet  
Rob Peterman  
Sam Ramadori &  
Kathryn Archer  
Maureen D Shawcross  
Jeff Smith  
Ryan V Ungemach  
Catherine Wei

**MBA 2003**

**Class Agent: Raj Aggarwal**  
**Total: \$11,830**  
**Participation: 8%**

IVEY SOCIETY, BENEFACTOR  
China Mining Resources  
Group Limited  
Bogdan Comanita

**Brian Huen**  
IVEY SOCIETY, THE  
FIRST DECADE SOCIETY  
Robert Jaques

**Peter Sang Ng**  
OTHER ANNUAL  
FUND CONTRIBUTIONS  
Anonymous

Brian Balkwill  
Kenneth A Broekaert  
Dinesh Chaudhari  
Wah-Kit Cho  
Steve Dekker  
Sonal N Doshi

**Leonard Firkus**  
Stephen Fitzpatrick  
Debra L Granatstein  
Grant Headrick  
Salman Hirani  
Xiaoyan Ji  
Jean-Philippe Leblanc  
Michael Leboldus  
Spencer Low  
James MacDonald

Jonathan McDooling  
David Nash

**Eliza C O'Neil**  
Benjamin R Rodney  
Katherine Romany  
Gurdip Sanghera  
Elan Satov  
Sing Huen So

**Dev Srinivasan**  
Victoria J Sweeney  
Helena Tigert  
Haiying Wang  
Yongdao Zhang  
Lisa Zhao  
Jerri Zheng

**MBA 2004**

**Total: \$12,115**  
**Participation: 8%**

IVEY SOCIETY, BENEFACTOR  
Daniel Barnholden  
Steven Hansen  
Sean Naylen  
Elaine & Ray Shiu  
IVEY SOCIETY, THE  
FIRST DECADE SOCIETY

Anonymous  
Lihong Zhou  
OTHER ANNUAL  
FUND CONTRIBUTIONS

Anonymous  
Anonymous  
Anonymous  
Anonymous  
Anonymous  
Anonymous

**Anonymous**  
Anonymous  
Gordon Alford  
David Barrett  
Daniel Benoit  
Mark Binns

**Stefan P Bortolussi**  
Tejinder Dhillon  
Neil D'Souza

**Rishi Gautam**  
Dabei (David) Jiang  
Xinyu Jiang  
Sarah Kirzinger  
Edwin Lee

Joseph J Lo  
Chris Lumley  
Jared Lundy  
Lee Merovitz  
Vincent Ng

Adam Posman  
Yong Pu  
Andrew & Kelsey Ramsden  
Steven Ridgeway  
Dan Shadd

Elliot Shiffman  
Colin Stairs  
Benjamin Tan  
Jeffrey Wood  
George Yan

**MBA 2005**

**5th Reunion  
Social & Fundraising Committee:**  
**Jesse Ahlan, Jared Bettridge,  
Mike Brydson, Lisa Cleary,  
Cara Cole, Prakash David,  
Adam Dean, Dylan Hardy,  
Kara Kennedy, Becky Perez,  
Dan Rowe, Stephanie  
Taylor Coughlin**

**Total: \$27,597**  
**Participation: 19%**

IVEY SOCIETY, BENEFACTOR  
**Jared Bettridge**  
Nicolas Korpela  
Mike McKenna  
IVEY SOCIETY, THE  
FIRST DECADE SOCIETY  
Jasper Chan  
Lora & Dylan Hardy  
Mark Healy  
Andrew Kennedy  
OTHER ANNUAL  
FUND CONTRIBUTIONS

Anonymous  
Anonymous  
Anonymous  
Anonymous  
Anonymous  
Mike Brydson

**Paul S Chapman**  
Kyle Chow  
Cara Cole  
Prakash David  
**Adam Dean**  
Graham Eisenhauer

Greg Grant  
Vinay Gupta  
Matthew Hall  
G Harris  
Dongwook Hwang  
Rajat Jain  
Adam & Melissa Jean  
Sandeep Kawadkar  
Jackie Kwong Leung

Alex Yongsheng Li  
Dong (Paul) Lu  
Christopher Madan  
Sidharth Misra  
Andre Mousseau  
Becky Perez  
Lisa & Paul Reid  
David Resnick  
Daniel Rowe

Robert Scobie  
Javier Serebrisky  
Arif Shivji  
Gregory Stewart  
Stephanie Taylor Coughlin  
Joe Thacker  
Mark Tomek  
Agata Urbanowicz  
Gregory Worsnop  
Daryn J Wylie  
Golnaz Yekrangian

**MBA 2006**

**Class Agent: Clare Aker**  
**Total: \$4,575**  
**Participation: 6%**

IVEY SOCIETY, BENEFACTOR  
**James Obright**  
IVEY SOCIETY, THE  
FIRST DECADE SOCIETY  
Anonymous  
Shane O'Farrell

**Tom Pawelkiewicz**  
Carlos Vicens  
OTHER ANNUAL FUND  
CONTRIBUTIONS  
Anonymous  
Clare Aker  
Trevor Davison

**Lisa Dymond (Wiens)**  
Laura Emmerton  
Chris Guillon  
Tae Ho Kim  
Walter Merino  
Eleni Mitsis  
Samantha Roman  
John Vinnai  
Chen Yang

**MBA 2007**

**Total: \$5,100**  
**Participation: 5%**

IVEY SOCIETY, BENEFACTOR  
Darwin Smith  
IVEY SOCIETY, THE  
FIRST DECADE SOCIETY  
Jonathan R Belair  
Riccardo Cosentino  
Brent Hutzal  
Unnat Kohli

Michael Liebrock  
Vijay Viswanathan  
OTHER ANNUAL  
FUND CONTRIBUTIONS  
Anonymous  
Anonymous  
Efreman Berman

Fabrizio Carrano  
Yingdong Chen  
Prashant Dube  
Keun Ho Lee  
John Qiang Tu  
Suraj Raythatha  
HongZhi Ruan  
Dr Fawaz Siddiqi  
Dr Josh Silvertown &  
Ilana Valo  
Michael Tevel  
Simon Xue  
Alex Yazdani

**MBA 2008**

**Class Agents:**  
**Anuj Chandarana,  
Irfan Daya, Trevor Hand,  
Lyndsay Passmore**  
**Total: \$5,871**  
**Participation: 8%**

IVEY SOCIETY, BENEFACTOR  
Ryan Kalt  
IVEY SOCIETY, THE  
FIRST DECADE SOCIETY  
Mark J Bergman  
Ryan Connolly  
Robert Dimitrieff  
Amy (Daw) Gibbons  
Hanz Gin  
Matthew LeQuelene  
Jean-François Letarte  
Aaron Minocha  
Jennifer Mitchell  
George N Nikopoulos  
Sameer Panjwani  
Stephen Stewart

OTHER ANNUAL  
FUND CONTRIBUTIONS  
Anonymous  
Colin Bogar  
Chandarana Family  
Mitsuru M Chiba  
Adam Ditkofsky  
Mariam Hashmi  
Vanessa Jang  
Eric Kung  
Doug Parent  
Carlo Roque

**MBA 2009**

**Class Agent: Chris Lau**  
**Total: \$7,857**  
**Participation: 11%**

IVEY SOCIETY, THE  
FIRST DECADE SOCIETY  
Neall Banner  
Dalton Baretto

Jason Billan  
Matthew Busbridge  
Kevin Callahan  
Laurence Chiu  
Sacha Gera  
Patrick Giles  
Jonathan Goldberg  
Jeff Goodwin  
Scott Gryba  
Alan Gryn  
Abhi Hansoti  
Myles Hiscock  
Nolan Hosking  
Erin Konkle

Christopher Lau  
Katherine K Lawrence  
Tom Maryniarczyk  
Steven McClelland  
Courtney Morris  
Hetal Pandya  
Manju Rose  
David Schibli  
Dr Zhen-Yu Tong  
Marc Turcotte  
Ashish Vashisht  
Danny Wang  
Ashley Ward  
Carter Jun Yu  
Ricky Zhang  
OTHER ANNUAL  
FUND CONTRIBUTIONS  
Patrick Farrell  
Anna Galica  
Mehran Redjvani  
Alfredo Suarez Alarcon

**MBA 2010**

**Total: \$8,551**  
**Participation: 23%**

IVEY SOCIETY, THE  
FIRST DECADE SOCIETY  
Anonymous  
Anonymous  
Sunil Acharya  
Dr Andrew Akelaitis  
Liz Anton  
Avnish Babla  
Shannon Bailey  
Adam Bortolussi  
Jared Breski  
Michael Brosseau  
Robert J Campbell  
Lisa Caruso  
Aniruddha Chudasama  
Beth Cole  
Katie Daly  
Patrick Davis  
Roberto de Leo

# CLASS GIVING

## EMBA, VEMBA

In recognition of their loyal support, donors who have supported the School for five or more consecutive years are listed in bold.

### IVEY SOCIETY LEADERSHIP LEVELS

Founders' Circle: \$10,000+ Deans' Circle: \$5,000-9,999 Patron: \$2,500-4,999  
Benefactor: \$1,000-2,499 The First Decade Society: \$100-\$999

(MBA continued)

Ibrahim Dossani  
Clayton Feick  
Jason R Fenn  
Tony Fiore  
Derrick Fournier  
Michael Geith  
Brandon Gerson  
Vanja Gorazi  
Ryan Goren  
Ian Haase  
Patricia Ing  
Adir Koschitzky  
Daneen Krinke  
Juan Lastra  
Josie Law  
Peter Lowas  
Deborah A M Lucas  
Elizabeth Fabbroni Martin  
Daniel Martindale  
Maheen Memon  
Milos Milicic  
Vincent Mok  
Christopher O'Grady  
James Pan  
Lauren Passmore  
Allison Price  
Omar Qutub  
Tirath Sandhu  
Cecil Sarin  
Yuan Shi  
Patrick Smith  
Jonathan Smithson  
Wei Sun  
Shanti Suppiah  
Elizabeth Suske  
Tamar Tepper  
Andre Tilban-Rios  
Susan Wiens  
Stuart Wilson  
Fraser Wiswell  
Diana Wong  
Todd Zeligman  
OTHER ANNUAL  
FUND CONTRIBUTIONS  
Kristine Beese  
John (Qiang) Cao  
Tiffany Chung  
Cathy Dong  
Kyle D'Silva  
Michael Geith  
Henry Liu  
Natalie Mauro  
Kamna Mirchandani  
Kathy Tran

### EMBA 1993

Charlotte S Ip

### EMBA 1994

IVEY SOCIETY,  
FOUNDERS' CIRCLE  
Jan De Silva  
OTHER ANNUAL  
FUND CONTRIBUTIONS  
**Janet E Heisey**  
Gary A Krikler  
Kimberley McRoberts

### EMBA 1995

Pamela E Stevenson  
Jim Zoras

### EMBA 1996

James Jewell  
David M McLaughlin  
Julian F Sellers

### EMBA 1997

IVEY SOCIETY,  
FOUNDERS' CIRCLE  
**Lana & Tim Hockey**  
IVEY SOCIETY, BENEFACTOR  
Claire D Duboc  
**David C Edwards**  
OTHER ANNUAL  
FUND CONTRIBUTIONS  
Anonymous  
Paul C Lott  
**Beth Shaw**

### EMBA 1998

IVEY SOCIETY, BENEFACTOR  
Dr Pat Gibney  
OTHER ANNUAL  
FUND CONTRIBUTIONS  
Derek W Gould

### EMBA 1999

IVEY SOCIETY, BENEFACTOR  
Luc Vanneste  
OTHER ANNUAL  
FUND CONTRIBUTIONS  
Anonymous  
Michael Anibaldi  
Normand J Landry  
Dr Yehiel Meghory  
W Cameron Moffatt  
Richard E Schler  
Trevor Shamas

### EMBA 2000

Craig Calkins  
Carmen E Harvey  
**Perry P Lea**  
Cindy Reid  
Frank Sartor  
Gino E Siciliano

### EMBA 2001

Johnny Au (HK)  
Helder Botelho  
Michael Costa  
Jarley Koo  
Allan Lee  
Andre ZI Mech  
Alan Uffelmann

### EMBA 2002

Lesley Bell  
Grace Bugg  
Mary Lou Hukezalie  
Harvey Naglie  
Michael P Shea  
Dan Vickery  
Richard Wah Kan  
Zhongze Wang (HK)

### EMBA 2003

Joaquim Balles  
Claudio De Vincenzo  
Michael Lung Fong (HK)  
Dr Bob Howard  
Philip Jones  
Diana Lamothe  
John Mountain  
Fermin Pico  
Jim Ramsay  
Vic Salem  
Ramesh Subramanian  
Teresa Tolhurst

### EMBA 2004

IVEY SOCIETY,  
DEANS' CIRCLE  
Clay & Linda Ullrich  
IVEY SOCIETY, BENEFACTOR  
Stella Tse (HK)  
OTHER ANNUAL  
FUND CONTRIBUTIONS  
Luc Boivin  
Doug Brown (HK)  
Christopher Emery  
Sandeep Grewal  
Lynette A F Hines  
Heidi Ludwick  
Daniel Sin  
Debbie Young

### EMBA 2005

**5th Reunion  
Social Committee:**  
**Jennifer Chong, Helen Hayes,  
Michelle Magee, Shane Magee,  
Michelle Lekkerkerker**  
IVEY SOCIETY,  
FOUNDERS' CIRCLE  
Simon Tin-Yin Cua (HK)  
IVEY SOCIETY, BENEFACTOR  
Virginia Sanchez Marin (HK)  
OTHER ANNUAL  
FUND CONTRIBUTIONS  
Anonymous  
Irene Wai Kwan Cheong (HK)  
Robert Cinapri  
Ashif Moloo  
Alice Man Wai Ngan  
Paul Van Katwyk  
Ashif Moloo  
Ping Yan

### EMBA 2006

IVEY SOCIETY, BENEFACTOR  
Stanley Luk  
IVEY SOCIETY, THE  
FIRST DECADE SOCIETY  
Peter Caldwell  
David Liao  
OTHER ANNUAL  
FUND CONTRIBUTIONS  
Andrew Bartley  
Shawn Ivey  
James Langstaff  
Linda Leon  
Samuel Li  
Michael Oreskovic  
Robert Portugaise

### EMBA 2007

IVEY SOCIETY, BENEFACTOR  
Vince Cascone,  
PMG Consulting  
IVEY SOCIETY, THE  
FIRST DECADE SOCIETY  
Anonymous  
Nina Layla Chadha  
Alexander Korte  
OTHER ANNUAL FUND  
CONTRIBUTIONS  
Stephen Bolton  
Tammy Johns  
Eric Mok  
Betty Choi-Yom Tsoi

### EMBA 2008

IVEY SOCIETY, THE  
FIRST DECADE SOCIETY  
Anonymous  
Edward Glavina  
John Pappas  
Stephen Weishar  
OTHER ANNUAL  
FUND CONTRIBUTIONS  
Victor Adesanya  
Edgar Barragan  
Blake Jespersen  
Shirin Khosravi  
Randy MacMillan  
Arnold Visser

### EMBA 2009

IVEY SOCIETY, BENEFACTOR  
Hugh McMullan  
IVEY SOCIETY, THE FIRST  
DECADE SOCIETY  
Anonymous  
Anonymous  
Rose-Ann Nathan  
Bruce Reid  
Heidi Schwarzkopf  
OTHER ANNUAL FUND  
CONTRIBUTIONS  
Loretta Yuen

### EMBA 2010

IVEY SOCIETY, BENEFACTOR  
Lynda & Russ Bruch  
John Margie

### VEMBA 1998

IVEY SOCIETY,  
DEANS' CIRCLE  
Jacqueline D Pyke  
IVEY SOCIETY, BENEFACTOR  
Leslie J Stephenson  
OTHER ANNUAL  
FUND CONTRIBUTIONS  
R B Dalby  
Diane A Gagner  
David R McElhanney  
Sandy G Murphy  
Nagib Premji

### VEMBA 1999

IVEY SOCIETY, BENEFACTOR  
**Dr Frederick B Swaine**  
OTHER ANNUAL  
FUND CONTRIBUTION  
Jacques Blais  
James Cunningham  
Claude Lariviere  
Kathy Munro  
Douglas Ostafichuk

### VEMBA 2000

**10th Reunion  
Social Committee:**  
**Richard Quesnel**  
Nicole Archambault  
Suzanne Gouin  
Brian McManus  
Phillip Quinn  
Kathleen M Wighton  
Wayne Yang

### VEMBA 2001

IVEY SOCIETY, BENEFACTOR  
J F (Jake) Bulet  
Judy Fairburn  
OTHER ANNUAL  
FUND CONTRIBUTIONS  
Dr Mohammad Azab  
Robert A Baker  
Bruno Demers  
Marion D Fraser  
Paul A King

### VEMBA 2002

IVEY SOCIETY, THE FIRST  
DECADE SOCIETY  
Marvin L Holmen  
OTHER ANNUAL  
FUND CONTRIBUTIONS  
D P Airey  
John Scarfe

# CLASS GIVING

# HBA

In recognition of their loyal support, donors who have supported the School for five or more consecutive years are listed in bold.

## IVEY SOCIETY LEADERSHIP LEVELS

Founders' Circle: \$10,000+ Deans' Circle: \$5,000-9,999 Patron: \$2,500-4,999  
Benefactor: \$1,000-2,499 The First Decade Society: \$100-\$999

### HBA 1938

IVEY SOCIETY, DEANS' CIRCLE  
The Late Edward G Aust

### HBA 1940

IVEY SOCIETY, FOUNDERS' CIRCLE  
**H Marie Smibert**

### HBA 1944

Iveagh E Schaus

### HBA 1945

Lawrence J Martello

### HBA 1946

IVEY SOCIETY, DEANS' CIRCLE  
G R (Bob) Blake  
OTHER ANNUAL FUND CONTRIBUTIONS  
Herbert M Ballantyne  
**Carl F Woodward**

### HBA 1947

IVEY SOCIETY, FOUNDERS' CIRCLE  
**Dr Richard M Ivey**  
IVEY SOCIETY, DEANS' CIRCLE  
**Gwen Anders**  
OTHER ANNUAL FUND CONTRIBUTIONS  
**W Robert Beacom**  
Tom T Nishio

### HBA 1948

Donald A McKillop

### HBA 1949

IVEY SOCIETY, PATRON  
**Ross Strickland**  
OTHER ANNUAL FUND CONTRIBUTIONS  
**K Mack Chrysler**  
Stewart Cornell

### HBA 1950

**60th Reunion Social Committee:**  
**Larry Agranove**  
IVEY SOCIETY, BENEFACTOR  
Anonymous  
**C Richard Sharpe**

### HBA 1951

IVEY SOCIETY, BENEFACTOR  
**Jean & Ken Harrigan**  
Herbert R Stein  
OTHER ANNUAL FUND CONTRIBUTIONS  
Donald Copland  
George P Hanna  
**Edward Milliken**  
Charles Noltie

### HBA 1952

Donald H Blanchard  
Elmer A Campbell  
John C Howard  
William L Louth

### HBA 1953

IVEY SOCIETY, FOUNDERS' CIRCLE  
**Colin L Hubling**  
**Robert E Hubling**  
IVEY SOCIETY, DEANS' CIRCLE  
**Cameron H Calder**  
IVEY SOCIETY, BENEFACTOR  
Margaret & Jim Fleck  
**Douglas E Heagle**  
**Hugh Morris**  
OTHER ANNUAL FUND CONTRIBUTIONS  
**Michael Ashton**  
Boyd Chesney  
**Roger G Doe**  
**Robert H Power**

### HBA 1954

IVEY SOCIETY, BENEFACTOR  
**Paul L Murray**  
OTHER ANNUAL FUND CONTRIBUTIONS  
John H Johnston  
**Douglas Page**  
**David K Poore**  
Ronald D Ray

### HBA 1955

**55th Reunion Social Committee:**  
**Bob McClelland**  
IVEY SOCIETY, FOUNDERS' CIRCLE  
Keith R Halpenny  
IVEY SOCIETY, BENEFACTOR  
**M Bruce Deans**  
OTHER ANNUAL FUND CONTRIBUTIONS  
Lucien Pare  
Howard E Williams

### HBA 1956

IVEY SOCIETY, FOUNDERS' CIRCLE  
**George S Dembroski**  
IVEY SOCIETY, BENEFACTOR  
**Barbara & John Carroll**  
Murray W Cooper  
Victor P Harris  
Dean Muncaster  
**Donald W Paterson**  
OTHER ANNUAL FUND CONTRIBUTIONS  
Anonymous  
Anonymous  
**Robert R Barnard**  
**Ronald Collyer**  
**Hugh John Cook**  
**Shirley & Bill Eichenberg**  
Mary Francis  
**Mary McGee**  
James A McLaughlan  
Darrel R McLaughlin  
**John Mitchell**  
Lawrence S Paikin  
Roy G Steel  
Dr Robert G Taylor

### HBA 1957

IVEY SOCIETY, BENEFACTOR  
**Bill Wood**  
OTHER ANNUAL FUND CONTRIBUTIONS  
**Paul G Condon**  
Donald S Durkee  
David R Gracey  
Robert L Innes  
**Janis I Jente**  
Joan & Keith Johnston  
**William K Kritsch**  
Donald Noble  
**Wayne Penny**  
**Ronald J Poth**  
**Robert M Shields**  
Charles E Wells

### HBA 1958

IVEY SOCIETY, DEANS' CIRCLE  
Douglas M Reid  
IVEY SOCIETY, BENEFACTOR  
**Geoffrey W Clarkson**  
Roger Emery  
OTHER ANNUAL FUND CONTRIBUTIONS  
**Yvonne & Ross Archibald**  
Jacqueline Collings  
**David Eng**  
**David A Johnstone**  
Donna J McDonald

### John Sloan

Adam Telfer

### HBA 1959

IVEY SOCIETY, FOUNDERS' CIRCLE  
Gerald Hipple  
IVEY SOCIETY, DEANS' CIRCLE  
Thomas H Brent  
IVEY SOCIETY, BENEFACTOR  
Shelagh & Jon Grant  
**Donald C Morrison**  
OTHER ANNUAL FUND CONTRIBUTIONS  
**Edward Y Baker**  
Roderick Evan Brown  
Ronald M Walenius

### HBA 1960

**50th Reunion Social Committee:**  
**Bruce Chadwick, Lionel Conacher, John Currie, Alex Eastwood, John Humphrey, John Liphardt, John Ricketts, John Strautnieks, Robbie Wildman**  
**Total: \$6,870**  
**Participation: 20%**  
IVEY SOCIETY, FOUNDERS' CIRCLE  
**John R Currie**  
IVEY SOCIETY, DEANS' CIRCLE  
John Strautnieks  
OTHER ANNUAL FUND CONTRIBUTIONS  
Robert P Bosworth  
Michael H Cochrane  
John D Fergusson  
Justice B T Granger  
George Hakojarvi  
**Dr & Mrs John A Humphrey**  
John E Mills  
Sean F Rea  
**John Ricketts**  
**Professor Douglas Westgate**

### HBA 1961

**Total: \$2,050**  
**Participation: 13%**  
IVEY SOCIETY, BENEFACTOR  
**Richard Innes**  
OTHER ANNUAL FUND CONTRIBUTIONS  
Peter F Hancock  
Hon Thomas A Hockin  
**Gregory Kasparian**  
Brock C Pitkey

### HBA 1962

**Total: \$28,100**  
**Participation: 21%**  
IVEY SOCIETY, FOUNDERS' CIRCLE  
Larry A Shaw  
IVEY SOCIETY, BENEFACTOR  
Richard J Thorpe  
OTHER ANNUAL FUND CONTRIBUTIONS  
Patricia Badeen  
Robert J Fenn  
Peter Knoepfli  
J Douglas Love  
Ian L Lucas  
G Denton Miller  
**Ernest T Steward**  
Robert J Taylor

### HBA 1963

**Total: \$1,325**  
**Participation: 11%**  
D M & J A Finlayson  
Glen H Heximer  
**Joseph J Hofer**  
Dave Martin  
Ronald G McNeill  
John Morris

### HBA 1964

**Total: \$1,100**  
**Participation: 4%**  
IVEY SOCIETY, FOUNDERS' CIRCLE  
W C Wood Foundation  
IVEY SOCIETY, BENEFACTOR  
**John G Craig**  
OTHER ANNUAL FUND CONTRIBUTIONS  
John E Martin

### HBA 1965

**45th Reunion Social Committee:**  
**Ross Amos, John Carr, John Carter, Michel David, George Graham, Ted Kernaghan, Gerry Kleiman, Terry Pinfold, Michael Rea**  
**Total: \$7,575**  
**Participation: 23%**  
IVEY SOCIETY, BENEFACTOR  
Ian R Campbell  
Ron Clark  
Edward J Kernaghan  
Terry G Pinfold  
Paul H Williamson

### OTHER ANNUAL FUND CONTRIBUTIONS

**John Carter**  
**Cyn & Jack Cronkwright**  
Michel David  
Robert G Johnson  
**James D Keenleyside**  
Dennis W Vollmershausen

### HBA 1966

**Total: \$900**  
**Participation: 11%**  
Wayne H Brock  
Dr Fredrick J Brooks-Hill  
J Kenneth Hord  
James W Lawrason

### HBA 1967

**Total: \$3,875**  
**Participation: 9%**  
IVEY SOCIETY, PATRON  
**Gary R Barnes**  
OTHER ANNUAL FUND CONTRIBUTIONS  
**John Burton**  
Garry M Dubecki  
Paul C Fogh-Dohmsmidt  
Marg & Ted Morrow

### HBA 1968

**Total: \$6,200**  
**Participation: 22%**  
IVEY SOCIETY, BENEFACTOR  
**Gary F Colter**  
**Douglas L Derry**  
**J Edward (Ted) Johnson**  
Ralph E Lean  
OTHER ANNUAL FUND CONTRIBUTIONS  
**David Fotheringham**  
F Lynn Glenn  
James S Hutton  
James S A MacDonald  
Richard H McLaren  
Joseph O Sinclair  
William R Trevena  
**Gary West**  
David L Whiting  
**HBA 1969**  
**Total: \$8,583**  
**Participation: 4%**  
IVEY SOCIETY, DEANS' CIRCLE  
**Gilles G G Ouellette**  
IVEY SOCIETY, PATRON  
Russel Robertson

# CLASS GIVING

# HBA (continued)

In recognition of their loyal support, donors who have supported the School for five or more consecutive years are listed in bold.

### IVEY SOCIETY LEADERSHIP LEVELS

Founders' Circle: \$10,000+ Deans' Circle: \$5,000-9,999 Patron: \$2,500-4,999  
Benefactor: \$1,000-2,499 The First Decade Society: \$100-\$999

### **HBA 1970**

**Total: \$4,150**  
**Participation: 17%**  
IVEY SOCIETY,  
DEANS' CIRCLE  
Robert T Shearer  
IVEY SOCIETY, BENEFACTOR  
**Bob D Crockford**

Brian G Domelle  
OTHER ANNUAL  
FUND CONTRIBUTIONS  
Larry Adamson  
Jack Cooper  
Richard Fiebig  
Robert P Gibson  
**Jane & Tim Marlatt**  
Susan M Reid  
William A Szejo

### **HBA 1971**

**Total: \$27,250**  
**Participation: 16%**  
IVEY SOCIETY,  
FOUNDERS' CIRCLE  
**Henry Cheng**  
Barbara & Ian Fraser  
**Arkadi Kuhlmann**  
IVEY SOCIETY, PATRON  
Daniel Scouler  
IVEY SOCIETY, BENEFACTOR  
R Peter Gillin  
Jim Hall  
D S Ripley  
OTHER ANNUAL  
FUND CONTRIBUTIONS  
Michael Diamond  
Dave Prentice  
Terry J Russell  
Graham D Senst &  
Dr Sarma Lauge  
**Norman D Thomas**

### **HBA 1972**

**Total: \$18,654**  
**Participation: 14%**  
IVEY SOCIETY,  
FOUNDERS' CIRCLE  
**Richard W Ivey**  
IVEY SOCIETY,  
DEANS' CIRCLE  
**Douglas D Greaves**  
IVEY SOCIETY, BENEFACTOR  
Bob Schram  
OTHER ANNUAL  
FUND CONTRIBUTIONS  
**M James Evans**  
Chuck Herod  
S Douglas Hurley  
Thomas C Ludlow

John McKinnon  
Peter W McNaughton  
John W Needham  
John S Purkiss  
Dennis G Romanson  
William A Shanks  
John Thompson

### **HBA 1973**

**Total: \$46,350**  
**Participation: 23%**  
IVEY SOCIETY,  
FOUNDERS' CIRCLE  
**Peter B Gudewill**  
The Late Teyva G Rosenberg  
**Susanne & Martin Thrasher**  
IVEY SOCIETY, PATRON  
David Holmes  
Alan Small  
IVEY SOCIETY, BENEFACTOR  
**Murray J Chant**  
Robin Dow  
Gerard P Murphy  
**Jim Reynolds**  
**Rob Reynolds**  
OTHER ANNUAL  
FUND CONTRIBUTIONS  
John D Alton  
Bruce Barton  
**Peter Farkas**  
Gary J Ghent  
Michael L Hayes  
**Edward Postrozny**  
Don Ridpath  
Durham C Stephens  
Bob Wigle

### **HBA 1974**

**Total: \$60,002**  
**Participation: 17%**  
IVEY SOCIETY,  
FOUNDERS' CIRCLE  
Anonymous  
**Hugh MacDiarmid**  
**Bruce M Shirreff**  
**Lino (Lee) Sienna**  
IVEY SOCIETY, PATRON  
**William O Morris**  
**Teresa & John Vander Hoeven**  
IVEY SOCIETY, BENEFACTOR  
Bradley W Flowers  
Moe Johnson  
**Michael S Schwenger**  
**Philip Unger**  
**Chricket & Mac Yule**  
OTHER ANNUAL  
FUND CONTRIBUTIONS  
Anonymous

Anonymous  
**Jo Barrington**  
David Eagles  
Vincent J Evers  
**Alan R High**  
**Rick Lane**  
**Shirley Roberts**  
Brian D Scott  
**Jackie & Steve Wilkinson**

### **HBA 1975**

**35th Reunion Social Committee:**  
**Sylvia Chrominska,**  
**Larry Corke, Brian Foster,**  
**Karin McCaskill, David Pavey,**  
**Paul Smith, Bill Tilston**  
**Total: \$12,824**  
**Participation: 7%**  
IVEY SOCIETY,  
FOUNDERS' CIRCLE  
**Sylvia D Chrominska**  
IVEY SOCIETY, BENEFACTOR  
Mac Van Wielingen  
OTHER ANNUAL  
FUND CONTRIBUTIONS  
David G Best  
Lawrence W Corke  
Gary Lax  
Bruce Murray  
Michael E O'Brien  
Stephen R Wilkinson

**HBA 1976**  
**Total: \$46,109**  
**Participation: 14%**  
IVEY SOCIETY,  
FOUNDERS' CIRCLE  
Anonymous  
Kao Ying Lun, John  
**Heather & Fraser Latta**  
**Jon Love, Nancy Yeomans**  
**Love & Christie Love**  
**John H Simpson**  
IVEY SOCIETY, BENEFACTOR  
Gord Brown  
Silvio D Di Gregorio  
P Lynne MacInnes  
OTHER ANNUAL  
FUND CONTRIBUTIONS  
Zbig Biskup  
**Raymond Castellan**  
Craig A Chenoweth  
Brian T Floyd  
John M Komisar  
Robert Orser  
Paul J Pickering  
**Harvey G Taraday**  
Ian Vasey

### **HBA 1977**

**Total: \$58,342**  
**Participation: 18%**  
IVEY SOCIETY,  
FOUNDERS' CIRCLE  
**Sam Gudewill**  
**Randy B M Royer**  
IVEY SOCIETY,  
DEANS' CIRCLE  
Marisa Kwok  
IVEY SOCIETY, BENEFACTOR  
William R Fulton  
**William J Kiff**  
**Jill & Kevin Yousie**  
OTHER ANNUAL  
FUND CONTRIBUTIONS  
Anonymous  
Anonymous  
Sonja Carney  
Gordon & Debra Casperd  
Peter Cook  
John Couse  
Donald A Dinnin  
Lois M Fraser  
Gary Grundman  
**Georges C Houde**  
Eric P Jones  
**Mary F Killoran**  
Sue Pennal  
Elaine Stanley  
Bruce Tuckey  
Stephen W Wilson  
Ouzi Zaccai

### **HBA 1978**

**Total: \$24,125**  
**Participation: 14%**  
IVEY SOCIETY,  
FOUNDERS' CIRCLE  
**Barbara G Stymiest**  
IVEY SOCIETY,  
DEANS' CIRCLE  
Dean A Connor  
IVEY SOCIETY, BENEFACTOR  
Bryan J W Baker  
Judith & Jonathan Cooperman  
**D Bruce Henning**  
**Nesbitt Family**  
OTHER ANNUAL  
FUND CONTRIBUTIONS  
Carl E Baker  
J Randall Donkervoort  
Caroline & Robert Duncanson  
**Gilles P Gagnon**  
**Doreen E Harvey**  
Mohmud A Kassam  
Rick Lancaster

### **Rychard Lardner**

Terry Marcus  
**Richard Russell**  
**Robert E Simpson**  
**Luke Sklar**

### **HBA 1979**

**Total: \$48,947**  
**Participation: 17%**  
IVEY SOCIETY,  
FOUNDERS' CIRCLE  
Chris & Michael McCain  
**Doug McGregor**  
Marti Morfitt & Patrick Weber  
IVEY SOCIETY, PATRON  
**Randolph J Dietrich**  
IVEY SOCIETY, BENEFACTOR  
**Michael Boyd & Shelagh Donovan**  
Roland C K To  
OTHER ANNUAL  
FUND CONTRIBUTIONS  
Peter Ballantyne &  
Margot Howard  
**J Jay Brown**  
John E Ellison  
David R Grant  
Barbara Lonergan-Byers  
Gary A Lyon  
**Keith McEachern**  
Robert D Snowdon  
James M Stinson  
E Ann Sutherland  
**Paul Switzer**  
Peter F Thom  
Douglas Wall  
Jim Yardy  
**Andrew C Zsolt**

### **HBA 1980**

**30th Reunion Social Committee:**  
**Rob Bracey, Greg Hurst,**  
**Bill Jamieson, Arlene Palango,**  
**John Puffer, Mike Ruper**  
**Fundraising Committee:**  
**Colleen Campbell, Rob Staffen**  
**Total: \$104,154**  
**Participation: 20%**  
IVEY SOCIETY,  
FOUNDERS' CIRCLE  
**Deb Barrett**  
**Colleen Campbell**  
Mark M Cowie  
**Steve Lear**  
IVEY SOCIETY,  
DEANS' CIRCLE  
**Staffen Family**

IVEY SOCIETY, PATRON  
Donald G Lang  
IVEY SOCIETY, BENEFACTOR  
Eileen M Brown  
David J Carroll  
**Cheryl Davidson**  
**Peter Irwin**  
**Michael Rupar**  
OTHER ANNUAL  
FUND CONTRIBUTIONS  
Anonymous  
Gordon Avard  
Oscar Belaiche  
Rob Bracey  
Janine Buis  
Paul A King  
Henry Kwong  
David J Markle  
**Brian Martine**  
**Douglas L Moody**  
Kevin O'Brien  
Julia A Scott  
**Steven Sims**  
Brian J Taylor  
**David Thompson**

### **HBA 1981**

**Total: \$210,080**  
**Participation: 30%**  
IVEY SOCIETY,  
FOUNDERS' CIRCLE  
**E Scott Beattie**  
**Ronald G Close**  
**Lisa Colnett**  
**Daniel A Devlin**  
**Tim MacDonald**  
**Suzanne Legge & Jeffrey Orr**  
**Nora Aufreiter & Lawrence Pentland**  
**William J Quinn**  
IVEY SOCIETY,  
DEANS' CIRCLE  
Stewart C Burton  
**Brian G Stock**  
IVEY SOCIETY, BENEFACTOR  
**John McFadden**  
OTHER ANNUAL  
FUND CONTRIBUTIONS  
Anonymous  
**Louise Adams**  
Beverly Behan  
Lorraine Chong  
Theresa C Dietrich  
**Stephen Foerster**  
**Patricia J Gass**  
Keith Glide

**Paul A W Hayman**  
**Jeffery Hill**  
**Herald Krimmer**  
Vance M Logan  
Jeffrey L McCuaig  
Joe McGann  
Kevin R McGraw  
**Scott E Pennock**  
Stuart & Lisa Penny  
Elizabeth Penny  
Kim & Ken Pinder  
**David F Robison**  
David Smith  
Ernie Spraggs  
**Dave Town**  
**June K Wing**  
**Ronald H Wolf**  
**Jane M Yates**  
Jim Zalusky

#### **HBA 1982**

**Total: \$63,785**  
**Participation: 15%**  
IVEY SOCIETY,  
FOUNDERS' CIRCLE

Wendy Adams &  
Wade Oosterman  
**Rosamond A Ivey**  
Roland T Keiper  
IVEY SOCIETY, BENEFACTOR  
Anonymous  
Anonymous  
**Patrick Horgan**  
**Dr P Fraser Johnson**  
Randy Rutherford  
OTHER ANNUAL  
FUND CONTRIBUTIONS  
Anonymous  
James Abernethy  
Paul Badeski  
Sara B Collins  
Christopher J Dawson  
**Kerri Golden**  
**Thomas G Hinton**  
**Christine M MacInnes**  
Martin J McConnell  
Michael L McPherson  
Rolfe M Philip  
Eric N Wegler  
Michael J Welling

#### **HBA 1983**

**Total: \$32,375**  
**Participation: 15%**  
IVEY SOCIETY,  
DEANS' CIRCLE  
Andrew Barnicke

**William J Jandrisits**  
**Tim McGuire**  
**Nicholas W Paine**  
David Wright  
IVEY SOCIETY, BENEFACTOR  
Dan Mida  
OTHER ANNUAL  
FUND CONTRIBUTIONS  
Anonymous  
Anonymous  
Anonymous  
**Michael J Browne**  
Pamela G Buckingham  
Kasia Czarski  
Robert Fish  
**Bruce T Gardner**  
**Paul Methot**  
Connie Morrison  
**David O'Neil**  
Elena Peet  
Mary Robertson  
**Doug Welsh**  
Stephen G Whitney  
Mark A Williams

#### **HBA 1984**

**Total: \$60,428**  
**Participation: 15%**  
IVEY SOCIETY,  
FOUNDERS' CIRCLE  
**George A Cope**  
**Carolyn M H Cross**  
Ray G Young  
IVEY SOCIETY,  
DEANS' CIRCLE  
**Adam Waterous**  
IVEY SOCIETY, PATRON  
Gino L Martone  
**David Montanera**  
IVEY SOCIETY, BENEFACTOR  
Alec W G Clark  
Stephen S Hughes  
Pamela Jeffery  
Tony Meehan & Vithia Saing  
**David T Strickland**  
OTHER ANNUAL  
FUND CONTRIBUTIONS  
Kim Bildfell  
Susan C Clifford  
James Gilliland  
Gerald C Holowachuk  
David Jenkins  
Barbara Lauer  
Lisa Lim

**Ingrid & Rob McClelland**  
**Sean C V Mullin**  
Lee St James

#### **HBA 1985**

**25th Reunion**  
**Social Committee:**  
**Juliet Atha, Shawna Brown,**  
**Russ Bruch, John de Roos,**  
**Paula de Roos, Susan Lemieux,**  
**Doug Lyons, Micheal Sachter**  
**Fundraising Committee:**  
**Russ Bruch, Bill Quinn**

**Total: \$43,185**  
**Participation: 24%**  
IVEY SOCIETY,  
FOUNDERS' CIRCLE  
Scott & Janet Clark  
IVEY SOCIETY,  
DEANS' CIRCLE  
Dr Michael A Holloway  
IVEY SOCIETY, PATRON  
Jenny & Bruce Lamb  
Sharon & Steve Miller  
**Bill Quinn**  
Paul G Riedlinger  
IVEY SOCIETY, BENEFACTOR  
**Lynda & Russ Bruch**  
**Alicia & Tony Cestra**  
**Bruce & Lisa Rothney**  
Ann & Sean Shannon  
OTHER ANNUAL  
FUND CONTRIBUTIONS  
Anonymous  
Anonymous  
**Catherine Addison**  
Melissa A Alves  
Juliet Atha

**Philippe Bergeron**  
Ben Butler  
John J de Roos  
**Stephen Dewis**  
**Rhonda L English**  
Chris Francis  
Sabina Jaenisch  
**Greg W Johns**  
Beverly & Gordon Knapp  
John J MacDonald  
Lori Nemeth  
Steven Noble  
Lisa M Pankratz  
Patrick F Pelliccione  
Dave Postowoj  
Janet Powell  
**Jordan Rose**  
**Douglas Stirling**  
John Whitehead

#### **HBA 1986**

**Total: \$68,725**  
**Participation: 20%**  
IVEY SOCIETY,  
FOUNDERS' CIRCLE  
**Paul J Atkinson**

John A K Francis  
IVEY SOCIETY, PATRON  
Peter Simon  
IVEY SOCIETY, BENEFACTOR  
Robert A Brown  
Peter Farrell &  
Anne Forsyth-Farrell  
Tony Francolini &  
Angie Francolini  
Stephen C Hill  
Denise C MacDonald  
**Theresa & Robert Scullion**  
**Mike Thorfinsson**  
OTHER ANNUAL  
FUND CONTRIBUTIONS  
Anonymous  
Anonymous  
Anonymous  
**Mark B Coutts**  
Denise L Darragh  
Michael Glionna  
Hugh Hamilton  
Paul Ingram & Ann Martin  
Therese Loveland  
Barry E Mannell  
Roy H Mierdel  
Ronald P Reinders  
**Jeff Weiss**  
S Bradley Wiley  
**James A Ziegel**  
Dario G Zulich  
Cary Zweig

#### **HBA 1987**

**Class Agents: Darin**  
**Deschamps, Al Sellery**  
**Total: \$41,455**  
**Participation: 16%**  
IVEY SOCIETY,  
FOUNDERS' CIRCLE  
**Darin & Lisa Deschamps**  
IVEY SOCIETY,  
DEANS' CIRCLE  
Ian Aitken  
**Cynthia J Devine**  
Paul K Pew  
**Alan G Sellery**  
IVEY SOCIETY, PATRON  
**Dino A DiCienzo**  
IVEY SOCIETY, BENEFACTOR  
Catherine & Clarke Herring  
Bill Jack  
**Todd McCuaig**  
Judy & Steve Meston  
OTHER ANNUAL  
FUND CONTRIBUTIONS  
Anonymous  
Geoffrey Gisser  
**David Gold**

Kevin Higgins  
Jacqueline R Nellich-Ricci  
Terry B O'Hara  
David Samuel  
Michael Seliga  
Errol D Soriano  
Robert Stark  
**Richard G Warburton**

#### **HBA 1988**

**Total: \$11,750**  
**Participation: 15%**  
IVEY SOCIETY, PATRON  
**Brett E B Barakett**  
Allan Drewlo  
**Doug Guzman & Sheila Brown**  
IVEY SOCIETY, BENEFACTOR  
Karen L Powell  
OTHER ANNUAL  
FUND CONTRIBUTIONS  
Anonymous  
Lynda E Bernst  
Marina L Brock  
Kathy Denardo  
Scott W Doan  
James A Ficzure  
Anne Forsyth-Farrell &  
Peter Farrell  
Stacey Grant-Thompson  
Paul A Kalbfleisch  
Christine A Nalborczyk  
Thomas J Parker  
Brian W Reesor  
Paul C Rogers  
Lisa Sanders  
Susan R Storey  
David B Torrence

#### **HBA 1989**

**Class Agent: Michael Pun**  
**Total: \$20,606**  
**Participation: 16%**  
IVEY SOCIETY,  
FOUNDERS' CIRCLE  
Michael B Hill  
IVEY SOCIETY, PATRON  
**Michael W Pun**  
IVEY SOCIETY, BENEFACTOR  
Scott G Bere  
**Daniel A Buis**  
**Joelle & Sante Corona**  
Sara & Mark Waldron  
OTHER ANNUAL  
FUND CONTRIBUTIONS  
Anonymous  
Katie Bennett  
Michele Calpin  
David A Carreiro

Alex Dey  
Charles Evans  
Robert A Gold  
Nicole Haggerty  
**Brent A Hubbs**  
Jamil K M Nazarali  
Randal Price  
Bradley W Rome  
Jim Semple  
**Bryan C Tatoff**  
**James Verwaayen**

#### **HBA 1990**

**20th Reunion**  
**Social Committee:**  
**Marysia Czarski, Mike Wilson**  
**Fundraising Committee:**  
**Dave Dal Bello, Sheldon**  
**Greenspan, Greg Guatto,**  
**Angela Simo-Brown, Tim**  
**Watson, Michael A R Wilson**  
**Total: \$235,235**  
**Participation: 22%**  
IVEY SOCIETY,  
FOUNDERS' CIRCLE  
Laura A Marks Entwistle  
Michael A R Wilson  
IVEY SOCIETY,  
DEANS' CIRCLE  
David P Dal Bello  
Greg & Tracy Guatto  
IVEY SOCIETY, PATRON  
Steven A Latimer  
Louise Martin  
Timothy W Watson  
IVEY SOCIETY, BENEFACTOR  
**Kimberly Facca &**  
**James Bartrop**  
Mary Caco-McArthur  
Kevin Cinq-Mars  
Christopher A Lane  
Loris Lazzar  
**Bradley A Radin**  
OTHER ANNUAL  
FUND CONTRIBUTIONS  
Nicole Archibald  
Esther Benzie & Mark Phillips  
Marysia Czarski  
**Kevin & Kelley Dalton**  
Christina de Vries  
Ron Goldstein  
Jeffrey M Lewis  
B Elizabeth MacCabe  
David A Mark  
Eric Martin  
Mark Phillips & Esther Benzie  
**Michael & Vivian Polak**  
Angela M Simo-Brown  
Jonathan R Turnbull  
**Michael J Voskuil**

**CLASS GIVING**  
**HBA** (continued)

In recognition of their loyal support, donors who have supported the School for five or more consecutive years are listed in bold.

**IVEY SOCIETY LEADERSHIP LEVELS**  
Founders' Circle: \$10,000+ Deans' Circle: \$5,000-9,999 Patron: \$2,500-4,999  
Benefactor: \$1,000-2,499 The First Decade Society: \$100-\$999

**HBA 1991**

**Total: \$10,168**  
**Participation: 11%**

IVEY SOCIETY, DEANS' CIRCLE  
**John G Inch**  
IVEY SOCIETY, PATRON  
**Mark J Lewis**  
OTHER ANNUAL FUND CONTRIBUTIONS  
Anonymous  
Laura Berkmortel  
Kevin Condon  
**Craig Ellis**  
**Mark H Layne**  
**Rosemary Li-Houpt**  
Rhona McNab Doyle  
Todd Roberts  
Greg I Schinkel  
**Angela M Schneider**

**HBA 1992**

**Total: \$20,590**  
**Participation: 10%**

IVEY SOCIETY, FOUNDERS' CIRCLE  
Karen A Crich  
IVEY SOCIETY, PATRON  
John B Simcoe  
IVEY SOCIETY, BENEFACTOR  
Judy L Riege  
**Mark Runstedler**  
OTHER ANNUAL FUND CONTRIBUTIONS  
Anonymous  
Richard Daniel Adair  
**Sherri Agnew**  
Jeffrey Allsop  
Gregory J Buzanis  
Andrew Carragher  
Marnie L Clark  
John L Corso Jr  
Rick B Cusimano  
John W Davis  
Mary Fleming Graham  
Angus Fraser  
Timothy E Kuepfer  
Anup A Kuriya  
John Loh  
C Robert Lombardi  
**Susan Lucas**  
Robert MacKay  
**Keitha (Mackay) McClocklin**  
Karen M Peesker (Boehnke)  
Stephen Taran

**HBA 1993**

**Class Agent: Kevin O'Brien**  
**Total: \$20,524**  
**Participation: 23%**

IVEY SOCIETY, DEANS' CIRCLE  
**Yolanda & David Campbell**  
IVEY SOCIETY, PATRON  
**Andrea & Kevin O'Brien**  
IVEY SOCIETY, BENEFACTOR  
**Shawn D Aspden**  
**Dr M Kathryn Brohman**  
**Alan Wright**  
OTHER ANNUAL FUND CONTRIBUTIONS  
Alissa Anzarut (Podheiser)  
**Mark D Applebaum**  
**Stephanie J Brooks**  
Michelle A Butler  
Michael D Carleton  
Stephanie Chen  
Brent Choi  
Roman A Duch  
Karina Eichenberg  
**Andrew Fletcher & Family**  
William Green  
Sonia Grunau  
Michael D Klinck  
**Antoni A Krajewski**  
Lisa M Li  
Cynthia H P Mar  
**Pauline Martin & Family**  
**Tina & Laird McLean**  
**John McNain**  
Andrea M Peel  
Paula J Puddy  
**Gordon V Sandford**  
Michael J Van Oostrom  
**Darren J Wallace**  
**Glen Webster**

**HBA 1994**

**Total: \$12,672**  
**Participation: 15%**

IVEY SOCIETY, PATRON  
William Balassone  
David Ryan Gledhill  
IVEY SOCIETY, BENEFACTOR  
Anonymous  
Chanda Carr & Peter Giacomelli  
OTHER ANNUAL FUND CONTRIBUTIONS  
Laura E Alexander  
Jannalee I Anderson  
David & Wendy Barron  
Jeffrey Bell

Bruce Campbell  
Bryan Carlson  
Fred Cox  
Glenn Cressman & Sarah Colman  
Donald R Hutchison  
Robert & Oricia Smith  
Tena Thiessen  
Karin Wiens  
Peter Wilcox  
**Krista K Wylie**  
Kieran Young

**HBA 1995**

**15th Reunion Social Committee:**  
**Lisa Shepherd**

**Fundraising Committee:**  
**Peter Giacomelli, Peter Kalen**

**Total: \$7,290**  
**Participation: 13%**

IVEY SOCIETY, BENEFACTOR  
Peter Giacomelli & Chanda Carr  
OTHER ANNUAL FUND CONTRIBUTIONS  
Anonymous  
Anonymous  
Anonymous  
Alastair Caddick  
Nicholas Cheung  
Leon Gurevich  
**Jason Hollingsworth**  
Ellen R Jarmain  
**Peter Kalen**  
Lisa Kasick  
Jonathan Longworth  
**Jeannine Pereira**  
James D Ringler  
**Paul Y Takasaki**

**HBA 1996**

**Total: \$12,715**  
**Participation: 21%**

IVEY SOCIETY, PATRON  
**Tasha & David Rawlings**  
IVEY SOCIETY, BENEFACTOR  
**Michael R Cowan**  
**Nathan E Eldridge**  
**Richard Kim**  
Kevin S Williams  
OTHER ANNUAL FUND CONTRIBUTIONS  
Anonymous  
**Matthew & Kerry Bennett**  
**David C Burnie**

Ehren Cory  
Steve Dekker  
Michelle S Doig  
Donna L English  
Jeff Faris  
Robyn Feldberg-Katz  
William A Field  
Adam Kafka  
Nhat-So Lam  
Jonathan Minsky  
**Karin A Mueller**  
**Mark E Richards**  
Martha & Dirk Schrader  
Jeem Sirivar  
Julie Strofolino  
Victoria J Sweeney  
Ramon I Tavares  
Ben Thomas  
**Jan C Wilson**

**HBA 1997**

**Class Agent: Eliza O'Neil**

**Total: \$7,805**  
**Participation: 18%**

IVEY SOCIETY, FOUNDERS' CIRCLE  
David Wood  
IVEY SOCIETY, BENEFACTOR  
**Joey Cowan & Mike Cowan**  
**Santosh N Prasad**  
OTHER ANNUAL FUND CONTRIBUTIONS  
**Domenic D'Alessandro**  
Derek D Dietrich  
Ryan J Finch  
**David Fisch**  
Debra L Granatstein  
Mark C Gross  
**Connie & Key Kasravi**  
Andre Leung  
S Norman Leung  
Joseph J Lo  
**Craig S McDowell**  
**Eliza C O'Neil**  
Marco J Petta  
Louise Procktor  
**Todd M Purdy**  
Judith Schulich  
**Greg Secko**  
Andrea Young

**HBA 1998**

**Class Agents:**  
**Andrea Cramp, Brian Huen**

**Total: \$4,981**  
**Participation: 11%**

IVEY SOCIETY, BENEFACTOR

**Andrea Cramp**  
**Brian Huen**  
Mark Murski  
OTHER ANNUAL FUND CONTRIBUTIONS  
Anonymous  
Patrick R Bend  
Kenneth A Broekaert  
Mark Halpren  
Jason R Livingstone  
David Nash  
Samir S Ridesic  
Faramarz Romer  
Doug Roth  
**Scotty Vanderwel**  
Daryn J Wyllie

**HBA 1999**

**Total: \$33,179**  
**Participation: 19%**

IVEY SOCIETY, DEANS' CIRCLE  
**Kelly D Hampaul**  
IVEY SOCIETY, BENEFACTOR  
**Stuart M Elman**  
Daniel Fong  
**Phillip Pon**  
Elaine Shiu  
IVEY SOCIETY, THE FIRST DECADE SOCIETY  
Anonymous  
OTHER ANNUAL FUND CONTRIBUTIONS  
Anonymous  
Anonymous  
Derek Cairns  
Jenn Carkner  
**Melanie & Ted Cooper**  
**Dave DeNoble**  
Mark T Ellwood  
Andrew J Fortier  
Scott L Foster  
**B G Foster**  
Steve Gibson  
**Lindsay Holtz**  
**The Hunter Family**  
Robbie M Kumer  
Michael Leboldus  
Alan F Lever  
Lee Merovitz  
**Matt J Nicholls**  
Jeremy Paczuski  
Eric J Plesman  
Dan Shadd

**HBA 2000**

**10th Reunion Social Committee:**  
**Michael Barr, Adam Jean**

**Fundraising Committee:**  
**Stefan Bortolussi, Patrick Callaghan, Dann Cushing, Chris Lumley, James Obright, David Resnick, Mike Ritchie**

**Total: \$50,125**  
**Participation: 18%**

IVEY SOCIETY, FOUNDERS' CIRCLE  
Dann Cushing  
IVEY SOCIETY, PATRON  
Michael Ritchie  
Scott L Zack  
IVEY SOCIETY, BENEFACTOR  
**James Obright**  
OTHER ANNUAL FUND CONTRIBUTIONS  
Anonymous  
Brandon Alexandroff  
Gordon Alford  
Mike Baril  
**Stefan P Bortolussi**  
Jeffrey Brown  
Kevin S K Chan  
Tiffany R Foster  
Adam & Melissa Jean  
O Lo  
Chris Lumley  
Paula Mills (Shurge)  
David Resnick  
Richard Tan

**HBA 2001**

**Class Agents: Zameer Kassam, Vincent Pang**

**Total: \$5,220**  
**Participation: 8%**

IVEY SOCIETY, PATRON  
Frank Franciosa  
OTHER ANNUAL FUND CONTRIBUTIONS  
Anonymous  
Anonymous  
Ram N Amarnath  
Steve Gibson  
Maly & Ethan Bernstein  
**Neal & Lindsay Costello**  
Steven J Finlayson  
Kathryn Gardner  
**James Kay**  
Xiaolin Lu  
Sunny Mehra  
David M Mueller  
Kim Paulsen  
Mark D Schachter  
Jonathan Tafler

## HBA 2002

Total: \$4,070  
Participation: 11%

IVEY SOCIETY, BENEFACTOR  
Jeff M Baryshnik

IVEY SOCIETY, THE FIRST DECADE SOCIETY  
Katherine K Lawrence  
OTHER ANNUAL FUND CONTRIBUTIONS

David A R Brebner  
James Brooks

Paul S Chapman  
Winnie Cheng  
Mitsuru M Chiba  
Peter C Chrastamtsis  
Pavithra V Dharwarkar  
Chris Donkers

Reuben N Ellis  
James D Francis  
Ryan A Gendron  
Daniel Goldberg  
Evan N Hershberg  
Heather S Hrousalas

## Erin E Huff

Nick Koutsoukis  
Stephanie J Livingstone  
Eleni Mitsis  
Suraj Raythatha  
Mark D Switzer  
Jeffrey D Wilson

## HBA 2003

Total: \$2,075  
Participation: 6%

Anonymous  
Chandarana Family  
Patrick David  
Zara Lam  
Nathan Monk  
Akira Okubo  
Andrew Parkes & Bill Parkes  
Kenneth Richardson  
Andrew & Neeta Sarta  
Kevin Saskiw

## David Simons

Elizabeth Spence  
Jay Vaghela

## HBA 2004

Class Agents: Roz Angus, Candice Carson, Jenni Denniston, David French

Total: \$4,870  
Participation: 8%

IVEY SOCIETY, BENEFACTOR  
Kenyon Tse  
IVEY SOCIETY, THE FIRST DECADE SOCIETY

Jared Breski  
James Kim  
OTHER ANNUAL FUND CONTRIBUTIONS  
Anonymous

Anonymous  
Lisa Bean  
Julia Bouvet

Matthew Burbridge  
Robert Cherun  
Jennifer Denniston  
Pamela Draper  
Julia Knox  
Sohail Lalani  
William Leibel  
Raymond Ling  
Rahim Meghji  
John D Sullivan  
Stacey Weisberg

## HBA 2005

5th Reunion Social & Fundraising Committee: Mark Laing, Louise Poole, Alex Vander Hoeven, Michael Yue

Total: \$5,616  
Participation: 8%

IVEY SOCIETY, THE FIRST DECADE SOCIETY

Jeff Goodwin  
Michael Kirtou  
Mark Laing  
OTHER ANNUAL FUND CONTRIBUTIONS

Anonymous  
Mathew Abramsky  
Ari Black  
Colin Bogar

Anna Galica  
Mariam Hashmi  
Erich L Isopp  
Stephen Kenning

## Devon V Leckie

Natalie Mauro  
Aaron Minocha  
Jonathan Paul

Louise Poole  
Michael Shour  
Benji Sucher  
Jocelyn M Ullett  
Daniel Zatzman  
Stephanie Zhuang

## HBA 2006

Class Agent: Adam Bortolussi

Total: \$10,530  
Participation: 10%

IVEY SOCIETY, DEANS' CIRCLE

## Staffen Family

IVEY SOCIETY, THE FIRST DECADE SOCIETY

Adam Bortolussi  
Christopher Cruz  
Derrick Fournier  
Jonathan Goldberg  
Terence Jou  
Allison Price  
OTHER ANNUAL FUND CONTRIBUTIONS

Anonymous  
Anonymous  
Helen Cai  
Kristen Cornell  
Maida Dalmacio

Sean Dixon  
Andrew Hamer  
Braedon Hebert  
Kuo Wei Huang  
Taryn Laing  
Alvin Lau

Remus Leung  
Robb McCaig  
Zachary Michaud  
Stuart Murray  
Tara Negrave

Franky Ng  
Brent Osborne  
Christopher Palmer

Dirk Propfe  
Jennifer Rozon  
Sandy Towle  
Anton Vidgen

## HBA 2007

Total: \$4,020  
Participation: 8%

IVEY SOCIETY, THE FIRST DECADE SOCIETY

Jeffrey Greenspoon  
Vivek Kalwani  
Jordan Riese

Matthew Sobczyk  
Alyza Tarmohamed

OTHER ANNUAL FUND CONTRIBUTIONS  
Jonathan Batson  
Michael & Stefanie Block

Merridyth Coyle  
Denise D'Avella  
Matthew Fenton  
Nicole Fich  
Paul Heuts  
Brendan Howard  
Stephanie Hui  
Shaunt Kalloghlian  
Jackelyn Livesey  
Jennifer Lomax  
Kevin Makowchik  
Derek Mior  
Tyler J O'Hagan  
Christopher Petit  
Alexandra Power  
Andrew Rapsey  
Emilka Sage  
Kathy Tran  
Harish Venkatesh

## HBA 2008

Total: \$11,450  
Participation: 9%

IVEY SOCIETY, DEANS' CIRCLE

## Staffen Family

IVEY SOCIETY, BENEFACTOR

Prabhsimran Chandhoke  
Reed McDonnell  
IVEY SOCIETY, THE FIRST DECADE SOCIETY

Omar Al Jabri  
Rahim Ladak  
Sarabeth Lear  
Kirk McNamara  
Neil Peet

David Phelan  
OTHER ANNUAL FUND CONTRIBUTIONS

Anonymous

Navi Boparai  
Jill Brush  
Jason Cottrell  
Robert Davis  
Erin Dragasevich  
Craig Follett

Felix Gernburd  
Corey Halyk  
Nathalie Hull  
Youtaik Benjamin Kim  
Ventrice Lam  
David McCann  
Mandy S Meirovich  
Robert A Motherwell  
Bryan Palma

Stephanie Porter  
Abigail Rayner

Ashley Riske  
Daniel Sacks  
Justin Toribio  
Max Torokvei  
Matthew Unruh

## HBA 2009

Class Agent: Lisa Kendrick

Total: \$2,850  
Participation: 7%

IVEY SOCIETY, THE FIRST DECADE SOCIETY

Anonymous  
Ankur Bansal  
Amy Childs

Limoza Dalipi  
Rachel D'Silva  
Racha El-Ladki  
Patrick Ferraro

Robert Gavin  
Brett Girard  
Paul Jun

Igor Lukac  
Dustin Maleganeas  
Stephen Shedletzky

Benjamin Wilinofsky  
Matthew Willis  
OTHER ANNUAL FUND CONTRIBUTIONS

Anonymous  
Lee Berger  
Stephanie Marie Gurski  
Ransom Hawley

Gillian Heisz  
Eric Janssen  
Adam Jenah  
Lisa Kendrick

Justine Kilby  
Courtney Lerman  
Matthew W Montemurro

Ryan Nelson  
Nadine Ramrattan  
Robbie Sherman  
Sheila Weekes  
Devon Wright

## HBA 2010

Class Agents: Ashley Kennedy, Richard Wong

Total: \$4,142  
Participation: 14%

IVEY SOCIETY, THE FIRST DECADE SOCIETY

Matthew Ball  
Franny Blustein  
Felix Cornehl  
Melissa Crnic

Charles Dieu  
Stas Dimitropoulos  
Kaitlin Fayrik  
Laurel Garven  
Natalie Greggain

Clare Herlihy  
David Kaiser  
Ashley Kennedy  
Akshay Kumar  
Kristine Leavitt  
Talia Lenton-Brym

Richard Martin  
Melissa Pike  
Alex McCallum  
Ora Morison

Joel Newbert  
Kendra Puls  
Mohamed Punjani  
Ely Rygier  
David Sklash

Erica Spear  
Rani Suleman  
Mark Townsend  
Nicole Valmar

Derek Williamson  
Richard T Wong  
Kate Woodford  
Jordan Zhang

OTHER ANNUAL FUND CONTRIBUTIONS  
Anonymous

Lauren Aitchison  
Rose Blackman  
Philip Boehmer  
Ivan Bracalenti

Sandra Cook  
Patrick Duncan  
Mitch Freed  
Josh Howard

Alessia Kalish  
Robert Kapty  
Melyssa Kerr  
Tansik Koyuncu

Simon Lam  
Ivy Leung  
Steven Ma

Charlene Paddock  
Marta Rochkin  
Jillian Rodak  
Andrew Shopowitz

Alex Sy  
Sophie Zhao

CLASS GIVING

# DBA PhD

GIVING

# Faculty, Staff & Friends

**DBA**  
IVEY SOCIETY, BENEFACTOR  
Gary Davis

**Miguel Fernandez**  
**Moffat R Hill**  
OTHER ANNUAL  
FUND CONTRIBUTIONS  
Andrew Billingsley  
Lawrence W Blaine  
Richard H Carr

**W E Davis**  
Louis O Drouin  
Brian P Drummond  
Wilfred J Ham  
Kenneth G Lund  
James McGinn  
Robert J McLaughlin  
Nunzio M Spino  
Cdr W Bruce Wilson

**PhD**  
IVEY SOCIETY, PATRON  
Dr Hadi Satyagraha  
IVEY SOCIETY, BENEFACTOR

**Dr M Kathryn Brohman**  
Tony & Angie Francolini  
**Dr P Fraser Johnson**  
Dr Shige Makino  
Dr Rebecca Grant &  
Dr David McCutcheon  
IVEY SOCIETY, THE  
FIRST DECADE SOCIETY  
Arjun & Tripti Bhardwaj  
Dr James Liang  
Dr Dominic Lim  
OTHER ANNUAL FUND  
CONTRIBUTIONS

Anonymous  
**Dr Neil A R Abramson**  
Dr Sadrudin A Ahmed  
**Bill Blake**  
Dr Yolande Chan  
Dr Jacob YunKyung Cho  
Nicholas Close  
Dr Rosaire M Couturier  
Nicole Haggerty  
Dr Andrew Inkpen  
Kerry McLellan  
Charles E Mossman  
Dr D Sandfield Staples

IVEY SOCIETY,  
FOUNDERS' CIRCLE  
Anonymous  
Jalynn H Bennett  
Austin C Beutel  
**Judy & Murray Bryant**  
Bea & Purdy Crawford  
Kirby Gavelin  
IVEY Alumni  
Association, Toronto  
Deborah Barrett & Jim Leech  
**Dr Michiel R Leenders**  
Don MacDonald  
**MBA Association**  
Neil & Leanne Petroff  
Paul Seed  
William Shurniak  
Andy & Helen Spriet

**Carol Stephenson, OC**  
Brigadier F C Wallace &  
The Late Vera Isobel Wallace  
IVEY SOCIETY,  
DEANS' CIRCLE  
Ann & Bill Fleming  
ISACA (Toronto Chapter)  
Anthony R Melman  
Gordon Nixon  
Michael Phelps  
Gerard H Seijts  
Staffen Family  
Lawrence Tanenbaum  
IVEY SOCIETY, PATRON  
Zev Frishman  
Jonathan & Nita Hunter  
C B Johnston Family  
Eric Morse  
Professor Kathleen Slaughter  
Society of Management  
Accountants of Ontario  
Andrea M Stephen

IVEY SOCIETY, BENEFACTOR  
Anonymous  
Canada Helps  
**Kelly Cole**  
**Andrea Cramp**  
The Cuddy Family  
Tania Martin & Stephen Dowd  
Tony Francolini &  
Angie Francolini

**Barbara & Andrew Grindlay**  
Alan R Hibben  
Mary (Peg) Hunter  
Dana James  
**Dr P Fraser Johnson**  
Don MacDonald  
Dean Metcalf  
Dorothy Mikalachki

Jean & Jocelyne Monty  
Grant & Mona Rasmussen  
Allan Reesor  
Marvi Ricker  
Shelly & Robert Siskind  
Jasmine Hertt & Doug Steiner

**Cathy Vitkauskas**  
Dr Albert R Wood &  
Dr Vivian Wood  
IVEY SOCIETY, THE  
FIRST DECADE SOCIETY  
Eric Janssen  
Richard T Wong  
OTHER ANNUAL FUND  
CONTRIBUTIONS  
Anonymous  
Anonymous  
Anonymous  
Anonymous  
Anonymous  
J Byron Adams  
Terra Ahrens  
Cathy Allin-Kaptyn  
Pamela Anand  
Anne Marie Applin  
Ross & Yvonne Archibald  
Barbara Armstrong  
Tima Bansal & David Riley  
Catherine Benwell  
John "Jack" Blaney  
Barb Brock

**Stephanie J Brooks**  
Sarah Buck  
Wendy M Cecil  
Jonathan Chan  
Frank Cheng  
Phyllis Cohen  
**Rachel A J Condie**  
Ann Cowan-Buitenhuis  
Verna Cuthbert  
Brenda Dafoe  
Mike Dalgeish  
Jennifer Denniston  
Honor de Pencier  
Alicia Dorwart  
Alice Downing  
Fred Estabrooke  
Sonia Estrada  
Christopher Evans  
John & Julie Fleischmann

**Stephen Foerster**  
Marguerite Ford  
Douglas Freel  
Barbara Meredith &  
Jane Frost

Dr Joseph N Fry  
**Terri Garton**  
Venessa Gerson  
**Xinyi Gu**  
Dr Nicole R Haggerty  
Dr James E Hatch  
Lynne M Hevey  
Tun Hu  
Ian & Dawn

**Sharon Irwin-Foulon**  
Tammy Johnston  
Ali Kanani  
David Kelton  
Edward Kim  
Professor  
Srinivas Krishnamoorthy  
Mary Susanne Lamont  
Shiri Lazarovici  
Brian J Lazarus  
Karrie LeBlanc  
Laina Leizerovici  
Ann Lewarton Hitchins  
Kim Malcolm  
Mary Marcuzzi  
Naseem Merali  
Sadat Mirza  
Dave and Jill Mooers  
Joseph L Morea  
Sarah Morgan-Silvester  
Ada M Morris  
Yasmin Nanji  
Michele Noble  
Dave O'Brien  
Kathleen O'Neill  
Dr Barbara Orser  
Mary Panopoulos  
Professor Michael Parent  
George & Penny Pedersen  
David Pennycook  
Michaela Piro  
Bill Pretch  
Asad Rawra  
Sanford & Deborah Riley  
Seima Sawant  
Yaqi Shi  
Louise Spencer  
Sharon Stewart  
Mohit Talwar  
Stella Thompson  
Stewart Thornhill  
Janet Vatcher  
Diane Walker  
Michael Denis Watkins  
Carol Wiens  
Jessie & Larry Wynant

**Gifts were made  
in Memory of:**  
**Caroline A Brohman  
HBA '91**  
Eileen M Brown, HBA '80  
**Stephen Cuddy**  
The Cuddy Family  
**Elizabeth L Davidson**  
Lisa Sanders, HBA '88  
**Wail H El-Awad  
MBA '02**  
John Foufas, MBA '02  
Mustafa Husain, MBA '02  
Catherine Jian, MBA '02  
**Alexandra J Hurst**  
Anonymous  
Anonymous  
Anonymous  
Yvonne & Ross Archibald  
HBA '58  
Tima Bansal & David Riley  
Jeffrey Brown, HBA '00  
Derek Cairns, HBA '99  
Chris Donkers, HBA '02  
Jeannette A Eberhard, MBA '83  
Jeff Faris, HBA '96  
Ryan J Finch, HBA '97  
Debra L Granatstein  
HBA '97, MBA '03  
William Green, HBA '93  
Mark Halpren, HBA '98  
The Hunter Family  
Michael Leboldus  
HBA '99, MBA '03  
Chris Lumley  
HBA '00, MBA '04  
McDonalds Restaurants of  
Canada Limited  
David Nash, HBA '98, MBA '03  
Professor Michael Parent  
Kenneth Richardson, HBA '03  
Samir S Ridesic, HBA '98  
Neeta & Andrew Sarta, HBA '03  
Professor Kathleen Slaughter  
Ramon I Tavares, HBA '96

**Professor C B Johnston  
HBA '54, MBA '57**  
BMO Financial Group  
Verna & Tom Howard, MBA '72  
Stephen R Brown, MBA '70

C B Johnston Family  
Carol & John Kittredge, MBA '71  
Susan M Reid, HBA '70  
**Sidney F E May  
MBA '58**  
Don Badke, MBA '58  
David J Walker, MBA '58  
**William A McCleary  
HBA '94**  
William Balassone, HBA '94  
Bruce Campbell, HBA '94  
Krista K Wylie, HBA '94

**Dr Al Mikalachki  
MBA '60, PhD '64**  
Anonymous  
Al & Judy Abbott, MBA '60  
Dr Allan G Blair, MBA '60  
Barb Brock  
John D Campbell, MBA '60  
R Glen Caughey, MBA '60  
John G Chamberland, MBA '60  
Dr John C Courtney, MBA '60  
Brenda Dafoe  
Peter V Dawson, MBA '60  
James M Dowie, MBA '60  
W J Larry Duncan, MBA '60  
Francis M Edgell, MBA '60  
Fred Estabrooke  
Dr Joseph N Fry, MBA '60  
Arthur Grunder, MBA '60  
Wilfred J Ham, DBA '59  
Raymond A Hensel, MBA '60  
Ernie W Hnatiuk, MBA '60  
Ronald P Jaegglin, MBA '60  
John W Kelly, MBA '60  
Norm Knutson, MBA '60  
Robert E Leverette, MBA '60  
Kenneth G Lund, DBA '59  
John H Matthews, MBA '60  
Lynne & Paul McCreary, MBA '60  
Ron McCullough, MBA '60  
G Duncan McTaggart, MBA '60  
Dorothy Mikalachki  
Peter W Morse, MBA '60  
John Mustard, MBA '60  
Michael Needham, MBA '68  
Lynn & Len Pakulak, MBA '60  
Bill Pretch  
Thomas F Schopflocher, MBA '60  
W Keith Smith, MBA '60  
Terence B Stone, MBA '60  
John D Thompson, MBA '60

**Professor C B Johnston  
HBA '54, MBA '57**  
BMO Financial Group  
Verna & Tom Howard, MBA '72  
Stephen R Brown, MBA '70



**GIVING**

# Bequests, Corporate & Matching Gifts

Diane Walker  
Paul C White, MBA '60  
Donald O Wood, MBA '60

**Grenville T Norton  
MBA '75**

Brian Phillips, MBA '75

**Gifts were made in  
Honour of: Doreen  
McKenzie-Sanders**

Anonymous  
Anne Marie Applin  
Barbara Armstrong  
Jalynn H Bennett  
John "Jack" Blaney  
Wendy M Cecil  
Phyllis Cohen  
Ann Cowan-Buitenhuis  
Verna Cuthbert  
Honor de Pencier  
Deloitte & Touche LLP  
Deloitte Foundation  
Alice Downing  
Marguerite Ford  
Barbara Meredith & Jane Frost  
Barbara & Andrew Grindlay  
MBA '57  
Lynne M Hevey  
Home Depot Inc  
HSBC Bank  
Mary (Peg) Hunter  
Mary Susanne Lamont  
Thealzel Lee, MBA '83  
Cairine MacDonald, MBA '82  
Sarah Morgan-Silvester  
Michele Noble  
Kathleen O'Neill  
Dr Barbara Orser  
Patrick O'Callaghan  
& Associates, MBA '74  
George & Penny Pedersen  
Marvi Ricker  
Carol Stephenson, O C  
Stella Thompson  
Dr Albert R Wood  
MBA '57 & Dr Vivian Wood

**Bequests**

Anonymous  
Anonymous  
Anonymous  
Anonymous  
Anonymous  
Anonymous  
Anonymous  
Anonymous  
Anonymous  
Anonymous  
Anonymous  
Anonymous  
Anonymous  
Anonymous  
Anonymous  
Anonymous  
Neil M Armstrong, HBA '49  
The Late Edward G Aust  
HBA '38  
William E & Deborah A Aziz  
HBA '79  
Walter R Badun  
DBA '55, MBA '57  
Dr Ralph M Barford, LLD  
G R (Bob) Blake, HBA '46  
Dr Leslie Bowd, MBA '83  
Tom Brent, HBA '59  
Douglas G Brock, MBA '61  
Geoff & Nancy Browne  
HBA '77  
Heather & Neil Campbell  
HBA '82  
Gaylanne Phelan & The Late  
Richard H Chenoweth, MBA '78  
Linda & Randall Craig, HBA '86  
Marie-Anne Desjardins, MBA '98  
Margo & George Enns, HBA '59  
Karyn & Kevin Erker, MBA '91  
James A Erskine, MBA '67  
Brian R Foster, HBA '75  
Morna J Fraser, MBA '89  
Stephen G Friday, MBA '82  
The Late William Bell Grieves  
Douglas P Hayhurst, HBA '69  
Kathleen J &  
Mark E Henning, MBA '84  
Thomas P Howard, MBA '72  
A Margaret Hughes, HBA '42  
Dr Richard & The Late  
Beryl Ivey, HBA '47  
Randall Jang, MBA '77  
Robert A Jennings  
Carol Johnston & Family  
Jean & James Keenleyside  
HBA '65  
Margaret A Kimball, HBA '60  
Heather M Kitchen, MBA '92  
Louis Lagassé, MBA '73

Douglas M Lambert  
HBA '69 MBA '71  
Christopher H Lang, HBA '64  
Honor F E Lemon  
Andrew G Lonseth, MBA '80  
David K Lowry, HBA '64  
Duncan P Macgregor, HBA '64  
Lynne & Paul McCrear  
MBA '60  
Steve McDonald, MBA '83  
David R McGregor, MBA '86  
Donald McIntosh, MBA '58  
Robert D McMurdo  
Mona & Keith Munro, HBA '64  
Rosemary (Schauf) Pahl  
MBA '71  
Douglas M Reid, HBA '58  
Catherine Paquet &  
Pierre Rivard, MBA '83  
Thomas J Pressello, HBA '92  
J Wayne Rogers, HBA '72  
C John Schumacher, MBA '84  
William Shurniak, LLD  
Ronald J W Simpson, MBA '69  
Susan A Carty &  
David G Southern, MBA '86  
The Staffen Family—  
Rob (HBA '80, MBA '02)  
Sharon, Julia (HBA '06)  
Matt (HBA '08) & Candra  
The Late Elizabeth  
Stanley Sullivan  
Carol Stephenson, O.C.  
Eileen & Robert Stuebing  
MBA '74  
Lawrence G Tapp  
Klaus H Thiel, MBA '71  
Mary & George B Turnbul  
HBA '49  
Sonya P Ulrich, HBA '58  
James A W Van Slyck, HBA '64  
The Late Brigadier F C Wallace  
& The Late Vera Isobel Wallace  
Wendy M Whyte, MBA '83  
William P Wilder  
Barbara & John F Wood, HBA '64  
Donald P Woodley, MBA '70  
Alicia Zavitz

**Corporate Gifts**

**\$1,000,000+**  
ING DIRECT

**\$500,000 to \$1,000,000**  
Goldman Sachs Group Inc  
KPMG Enterprise

**\$250,000 to \$499,999**  
The Globe & Mail  
TD Bank Group

**\$100,000 to \$249,000**

CIBC  
Foundation Western and  
Alumni Western  
J Armand Bombardier  
Foundation  
RBC Financial Group

**\$50,000 to \$99,999**

AstraZeneca  
BMO Financial Group  
Great-West Life, London Life  
and Canada Life  
Medtronic of Canada Ltd  
National Bank  
Financial Markets  
Power Financial Corporation  
Scotiabank

**\$25,000 to \$49,999**

Barrick Gold Corporation  
Deloitte & Touche LLP  
Glusken Sheff & Associates  
IBK Capital Corporation  
PricewaterhouseCoopers  
TELUS Health Solutions

**\$10,000 to \$24,999**

Anonymous  
Anonymous  
Aurea Foundation  
BayerCropSciences  
BC Hydro  
Bell Canada  
Blue Pebble Inc  
Boston Consulting Group  
Canadian Pacific Railway  
Capital C  
Davies Ward Phillips &  
Vineberg LLP  
General Mills Canada Inc  
Hicks Morley Hamilton  
Stewart Storie LLP  
Holcim (Canada) Inc  
Imperial Capital Group  
Kinross Gold Corporation  
Morgan Stanley  
Onex Corporation  
Pelmorex Media Inc  
Polar Securities Inc  
Research in Motion Limited  
Suncor Energy Inc  
Teck Resources Limited  
TELUS Corporation  
Tembec Inc.  
Unilever Canada  
The Wesley & Mary Nicol  
Charitable Foundation  
OTHER ANNUAL FUND  
CONTRIBUTORS

Anonymous  
3M Canada Company  
Accenture  
Acuity Investment  
Management  
AGF Management Limited  
AMEX Bank of Canada  
Angels Gate Winery  
Bennett Jones  
Birch Hill Equity Partners  
Business Development  
Bank of Canada  
Canaccord Capital Corporation  
Certified General  
Accountants of Ontario  
Chauvel Fund of Tides  
Canada Foundation  
Chinese Canadian  
Professionals of Ontario  
Cineplex Odeon Corp  
CMA  
Connor Clark &  
Lunn Financial Group  
Covington Capital  
Cowan Foundation  
Credit Suisse  
CSL Group Inc  
Ernst & Young Toronto  
Form & Build Supply Inc  
Gazoo Mobile Solutions Inc  
General Electric Canada Inc  
Groupe Aeroplan Inc.  
Gryphon Partners  
Harry Rosen Inc.  
Home Depot Inc  
HSBC Bank  
Hydro One  
IBM Canada  
Institute of Chartered  
Accountants  
Investors Group Inc  
ISACA  
KingSett Capital Inc.  
KPMG LLP  
Kraft Canada Inc  
London Economic  
Development Corporation  
Macquarie Capital Markets  
Maple Leaf Foods Inc  
Mattamy Homes  
McKinsey & Company  
MDS Inc  
Mercer Canada Inc  
Meridian Artists  
Microsoft Corporation  
Molly Bloom's Irish Pub  
Mosaic Sales Solutions  
Canada Operating Co  
OMERS  
Ontario Teachers'  
Pension Plan

Pirie Foundation  
Rambri Management  
Incorporated  
Rogers Ventures  
RSM Richter LLP  
S C Johnson & Son Ltd  
SECOR Consulting  
Sleep Country Canada  
Softchoice Corporation  
Southwest Sun Inc.  
Starbucks Coffee Company  
Steelcase Foundation  
Summerhill Venture  
Tides Canada Foundation  
University of Toronto  
Vancouver Foundation

**Matching Gift Companies**

Alliance Data  
BASF Canada Inc  
Bell Canada  
BMO Financial Group  
Cenovus Energy  
Chevron U S A Inc  
CSL Group Inc  
Dell Canada  
Deutsche Bank  
EnCana Corporation  
Ernst & Young  
Gap Foundation  
General Electric Canada Inc  
General Mills Foundation  
GlaxoSmithKline Foundation  
Goldman Sachs Group Inc  
Honeywell Hometown Solutions  
HSBC Bank  
ING Direct Canada  
Investors Group Inc  
Ivanhoe-Cambridge CDP  
Capital Real Estate Group  
JPMorgan Chase & Co  
KPMG Foundation  
McDonalds Restaurants  
of Canada Limited  
MMC Matching Gifts Program  
Morgan Stanley Canada Ltd  
PCL Constructors Eastern Inc  
Procter & Gamble Fund  
SAP Canada  
Starbucks Coffee Company  
Steelcase Foundation  
Sun Life Assurance  
Company of Canada  
Suncor Energy Inc  
Talisman Energy Inc  
TELUS Corporation  
TransCanada Pipelines Limited  
Union Gas, A Spectra  
Energy Company  
Vale  
Wells Fargo Foundation  
Xerox Foundation

Every effort has been made to ensure complete accuracy of this publication. If any errors are noticed please contact the Ivey Annual Fund office at 519.661.3399 or toll free in North America at 1.877.IVEY.UWO. Please accept our apologies in advance. Each and every gift makes a difference and is deeply appreciated.

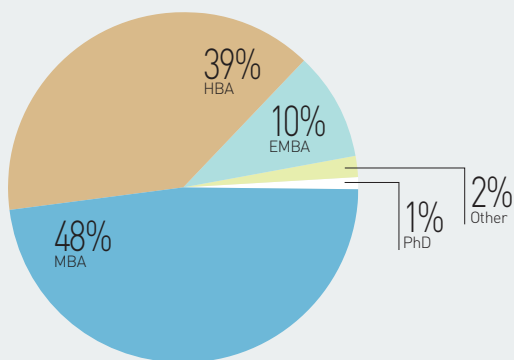
# IVEY AT A GLANCE Alumni

## Alumni in Industries

### Top Industries

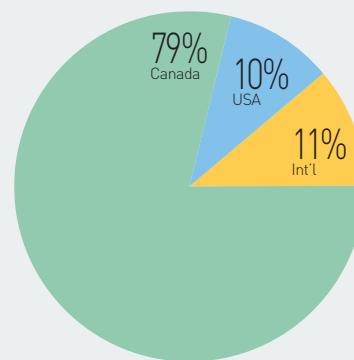
Finance	27%
Consulting	14%
IT / Telecommunications	9%
Manufacturing	7%
Education	6%
Healthcare / Pharmaceuticals	5%
Real Estate / Property	4%
Consumer Packaged Goods	4%
Wholesale / Retail	4%
Media / Entertainment	3%
Electricity / Gas / Water	3%
Marketing / Advertising / PR	2%
Legal	2%
Other	10%

## Degree Breakdown

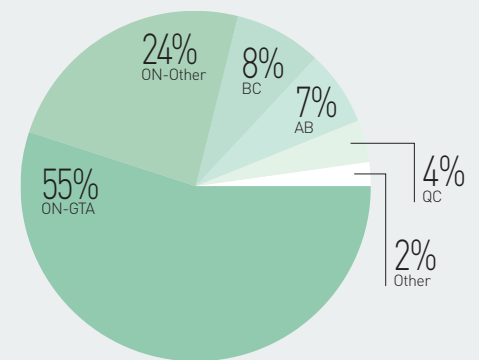


## Alumni at-a-Glance

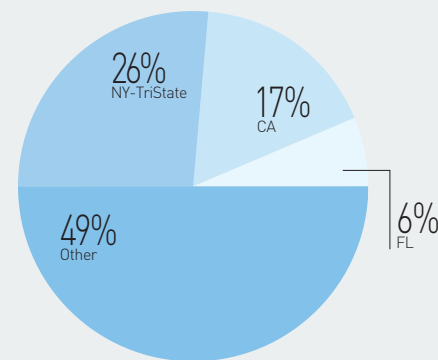
### Alumni around the World



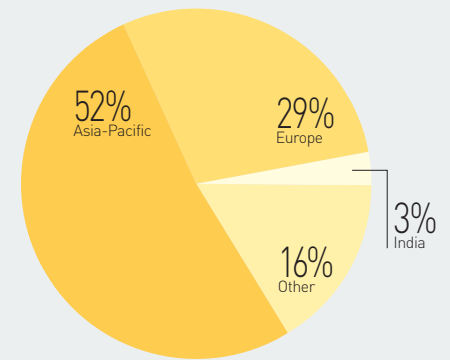
### Canada (13 Provinces / Territories)



### USA (44 States)

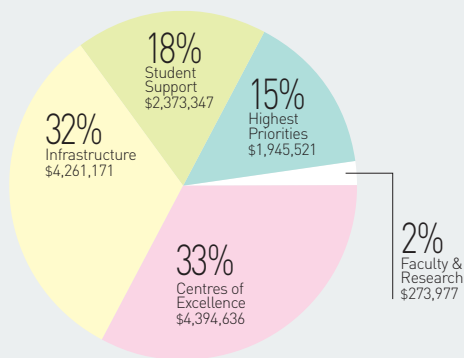


### International (99 Countries, excluding Canada & USA)



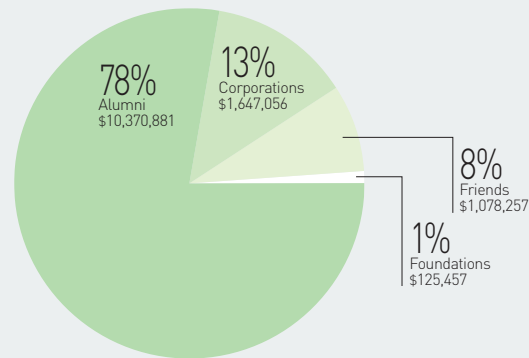
### Receipts by Designation

Total Receipts: \$13,248,651

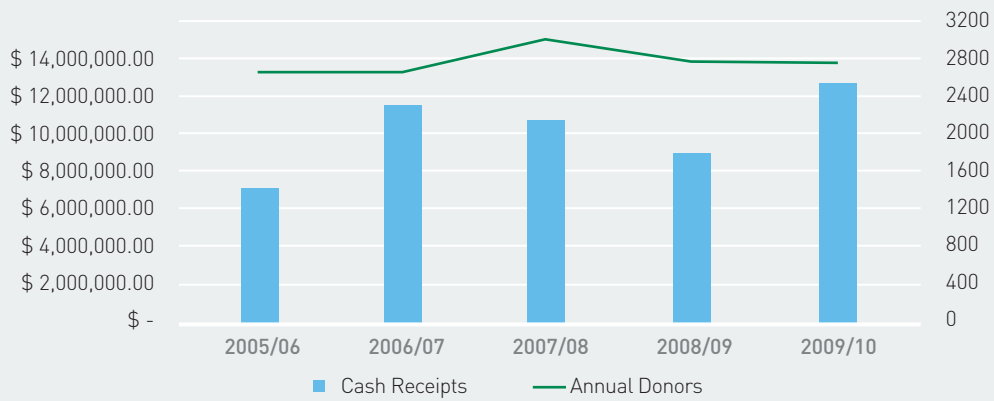


### Receipts by Source

Total Receipts: \$13,248,651



### Year to Year Receipts



TRIBUTE

# Larry Tapp

## Visionary leader in a time of dramatic change

LARRY TAPP, DEAN OF THE RICHARD IVEY  
SCHOOL OF BUSINESS FROM 1995 TO 2003,  
DIED ON JANUARY 31, 2011, AT THE AGE OF 73.

He is warmly remembered by the faculty, staff, alumni, and friends of Ivey as a visionary and strategic leader who was fearless in the face of unprecedented change, and passionate about the critical role of business education for Canada's future.

In re-branding the School and embracing internationalization, he set Ivey on a path to global prominence. As a leader he was defined by passion, courage and commitment, but for those closest to him, he will live on in their hearts as an inspiring teacher, storyteller and mentor.

Tapp made his mark in the corporate world in 1985 when he led the leveraged buyout of the global Lawson Mardon Group. After retiring from the company,

Tapp was encouraged by Earl Orser and Richard M. Ivey, HBA '47, to come to the Business School. Early in his tenure he led Ivey and the rest of Ontario's business schools through the deregulation of tuition for graduate and undergraduate programs, a massive change that lessened the School's dependence on government funding and allowed Ivey to chart its own destiny.

Tapp also oversaw the branding of the School with the Ivey name, expansion of the HBA and PhD programs, the launch of Ivey Hong Kong, and the growth of the research program. But the accomplishment he was most proud of was reconnecting the School to its powerful global alumni network. He once referred to alumni as "the backbone of the School."

"Under Larry the School's relationship with its alumni was solidified, making a lifelong connection," says Glenn Yonemitsu, MBA '89, former Executive Director, Ivey Advancement and currently CEO, Canadian Association of Management Consultants. During Tapp's tenure, the Ivey Alumni Association Board of Directors was formed, Ivey Advancement grew, the Ivey Campaign raised more than \$78 million, and the Ivey Distinguished Service Awards were launched.

Tapp's greatest talent was his ability to inspire others to reach higher. Trevor Hunter, MBA '97, PhD '05, served as Tapp's teaching assistant in his popular course on corporate governance. "Everyone will remember Larry for his leadership as a dean and a businessman," says Hunter. "I will remember him that way too, but it is how he supported and inspired me when I needed it most that I will never forget."

During his final days as Dean, Tapp was asked what he thought Ivey could achieve in the years ahead. He replied simply: "The future is whatever we want it to be. We're as good as anybody else—it's just a matter of how much we care and how hard we want to work."





## Larry Tapp Remembered

I will remember Larry as a Dean who fundamentally changed our Business School in many ways... we owe him a great debt.

—Paul Davenport

*Former President and Vice Chancellor, Western*

Larry [had] great business qualities: intelligence, instinct, vision, ambition, energy, resilience, adaptability. And, best of all, he was superb with people because he truly cared about them.

—Gilles Lamoureux, MBA '66

*Ivey Advisory Board member*

Larry brought a fresh and exciting vision and leadership approach to Ivey and led the School to a new prominence—more global, more innovative, more market focused and more in touch with the business community and our alumni.

—Larry Wynant, MBA '72

*Associate Dean, Asia during Larry's tenure*

He understood the absolute importance of being where the action was. It is highly doubtful that Ivey would today have a campus in Hong Kong if not for Larry Tapp's unwavering support and leadership.

—Paul Beamish, HBA '76, PhD '85

*Director, Asian Management Institute and Engaging Emerging Markets Research Centre*

Larry was always ahead of the curve. He initiated Board Director education ten years before the industry saw the need for well-educated and prepared Directors.

—Ron Charles, MBA '71

*Ivey Advisory Board member*

It was his infectious enthusiasm and vision for Ivey that motivated me to get actively involved with the Advisory Board. He had that effect on everyone. It is why the Ivey Brand was so greatly enhanced during his tenure.

—Chris Matthews, MBA '72

*Chair of the Ivey Advisory Board from 2001-2004*

Larry's leadership in moving Ivey to the international stage was the key to growth of all Canadian business schools. But it was his integrity and values in life that left the most lasting impression on me.

—John Irwin, CFO, CIO, Director of Facilities  
*Vice President of The Ivey Group of Companies*

IVEY BUSINESS SCHOOL 1922-1997

# 2010 Ivey Highlights

## January

### MBA students win investment banking competition

Ivey's MBA students topped 20 MBA teams across Canada for their investment banking pitch at UBC's 1st National Investment Banking Case Competition.

## February

### Dean blogs Olympic experience



As a Director of the Vancouver Olympics Committee, Dean Stephenson shared experiences, insights and observations from the 2010 Olympic Winter Games via the "Ivey at the Olympics" blog.



### Ivey student named champion entrepreneur

HBA student, Greig Perantinos, owner of Cool Moose Creamery, was named the 2010 Student Entrepreneur Ontario Champion by Advancing Canadian Entrepreneurship.



### Ivey student honoured for activism

HBA student, Rani Suleman, was one of eight Ontarians to be recognized by the Ontario Council for International Cooperation and the Canadian International Development Agency (CIDA) for her efforts in pursuing global justice.

## March

### PRIME MINISTER HARPER VISITS IVEY

Dean Stephenson hosted Prime Minister Stephen Harper in a roundtable session on March 25 for southwestern Ontario business and community leaders to discuss Canada's Economic Action Plan.



### the G20

#### Lawrence National Centre organizes G20 symposium

Ivey's Lawrence National Centre for Policy and Management (Lawrence Centre) presented *The G20: The Changing Face of Global Politics and Economics*, at Manulife Financial in Toronto on March 25. The symposium brought together more than 80 leaders from government, business, and academia to provide government with recommendations.



### Ivey dominates innovation challenge

Ivey HBA teams participating in the 2010 RBC Next Great Innovator Challenge earned four of the five finalist spots from more than 100 submissions from 18 Canadian universities.

### Annual Scotiabank case competition

The 21st Annual Scotiabank Case Competition attracted teams from 11 countries, including Brazil, Korea, New Zealand, Norway, Singapore and Thailand.

## April

### Ivey forum proposes new food and health policies



More than 80 policy-makers, researchers and industry leaders gathered at Ivey on March 29-30 to create an action plan for developing and adopting healthy food practices. The forum was hosted by Ivey's Lawrence National Centre. The resulting report, *Food and Health 2010: Advancing the Policy Agenda*, was produced by Professor David Sparling and identified six priorities for a Canadian Food Strategy.



May

### Ivey partners with Indian Institute of Management Bangalore (IIMB)

Dean Stephenson signed a MOU on May 24 with the IIMB to create new opportunities for joint research projects, exchanges, and international conferences in India and Canada.



### Ivey Coca-Cola China case competition in Shanghai

The Ivey Coca-Cola China Case Competition was held at the Canadian Pavilion of World Expo Shanghai, drawing more than 500 teams from 18 universities.

June

### Arkadi Kuhlmann receives honorary degree

Arkadi Kuhlmann HBA '71, MBA '72, Chairman and CEO of ING DIRECT, Ivey Advisory Board Chair, and co-Chair Ivey Campaign for Leadership, received an honorary degree from Western on June 18.



August

### Ivey welcomes new MSc class



Ivey welcomed 36 new students on August 3, who make up the inaugural class of the Masters of Science in Management program.

### Pierre Morrisette receives honorary degree

Pierre Morrisette, MBA '72, CEO and founder of Pelmorex Media Inc., received an honorary degree from Western at MBA Convocation. Ivey's Institute of Entrepreneurship is named in his honour and at the ceremony, Dean Stephenson announced an additional \$2.5 million had been donated to the institute by Mr. Morrisette.



September



### Ivey launches Campaign for Leadership

Ivey kicked off its fundraising campaign, Campaign for Leadership: Stepping Up for the Next Generation, with news that it had received a \$1.3 million boost from Great-West Life, London Life & Canada Life and Power Financial Corporation.



### Ivey launches Leadership on Trial report

A nine-month research project exploring leadership before, during and following the economic crisis culminated with the launch of Ivey's groundbreaking report, *Leadership on Trial: A Manifesto for Leadership Development*.



### Ivey launches Ian O. Ihnatowycz institute for leadership

On September 21 at the *Leadership on Trial* report launch, Ivey announced the formation of the Ian O. Ihnatowycz Institute for Leadership following a generous gift from Ian Ihnatowycz MBA '82, and Marta Witer. The \$3.5 million gift from Mr. Ihnatowycz and Ms Witer was matched by a further \$1.5 million from Western.

## October

### Ivey alumni reconnect for homecoming

More than 950 Ivey alumni returned to Ivey Oct. 1-3. During the event in the tent, Sylvia Chrominska, HBA '75, David Cornhill, MBA '80, and Paul Sabourin, MBA '80, received the Ivey Distinguished Service Award.



## New Cross-Enterprise Leadership book

Ivey launched its newest book, *Cross-Enterprise Leadership: Business Leadership for the 21<sup>st</sup> Century* at a Toronto event attended by EMBA alumni and authors Mary Crossan (right), Gerard Seijts and Carol Stephenson.



## November



### Stephenson receives Order of Canada

Carol Stephenson was one of 40 Canadians to receive the Order of Canada. She was lauded for her contributions to the technology sector, and for her efforts to advance business education.

### HBAs win international competition in Hong Kong



Ivey's HBA team finished first in the prestigious Hong Kong University of Science & Technology (HKUST) Citi Case Competition, against 18 competing schools from the U.S., Europe and Asia.

### Ivey alumni reconnect for inaugural Global Ivey Day



On November 4, more than 2,000 Ivey alumni and guests participated in the inaugural Global Ivey Day, which featured 30 events held in 26 cities. A highlight of the day was the global web-cast with alumni connecting from the Middle East, China, Canada and the U.S.



### Mac Van Wielingen shares leadership advice

Mac Van Wielingen, HBA '75, Co-Chairman, Director & Founder of ARC Financial Corporation, was the keynote speaker for the 2010 Richard G. Ivey Speaker Series. Mr. Van Wielingen spoke of his allegiance to values such as trust, competence, character and commitment.



### Peter Munk honoured

Peter Munk, Founder and Chairman of Barrick Gold Corporation, received the 2010 Ivey Business Leader Award at a sold-out event in Toronto. He was introduced by The Right Honourable Brian Mulroney.

## December

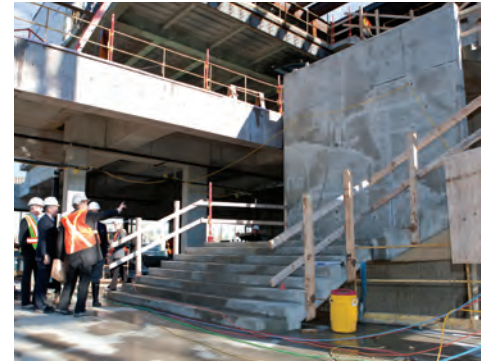


### MBA international study in China and India

Ivey's MBAs and EMBA's participated in the 2010 International Study Trip with 84 students visiting China (Hong Kong, Shanghai, Beijing) and 32 students visiting India (Dubai, Mumbai, Bangalore, and Delhi).



# Our New Building Rises



## PHASE 1 OPENING FALL 2011

Ivey's new building steadily took shape throughout 2010, with construction only temporarily slowed by a snowstorm that closed down most of Western and the City of London for three days in December. Students, faculty and staff are looking forward to beginning the migration across Western Road to their new home with the official opening of Phase 1 planned for Fall 2011, thanks to a \$50 million investment provided jointly through the Federal Government's Knowledge Infrastructure Program and Ontario's 2009 Budget as part of efforts to help modernize facilities and boost long-term research and skills training capacity at provincial colleges and universities.



